

TOTAL (BY PERCENT)

BIRTH TO COLLECTION PERCENT (Goal 24-48 hours)



0-12	5.47%
12-24	1.60%
24-48	90.37%
Greater than 48	2.57%

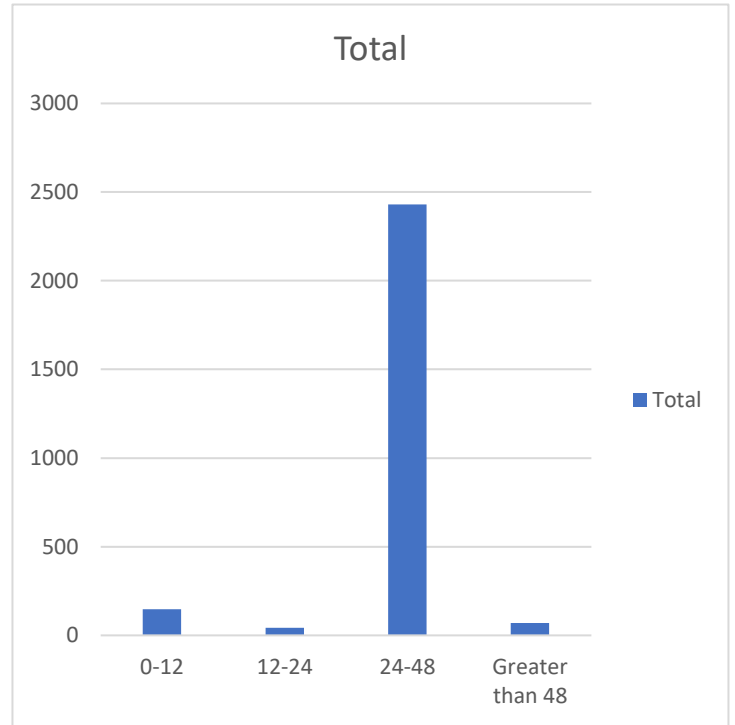
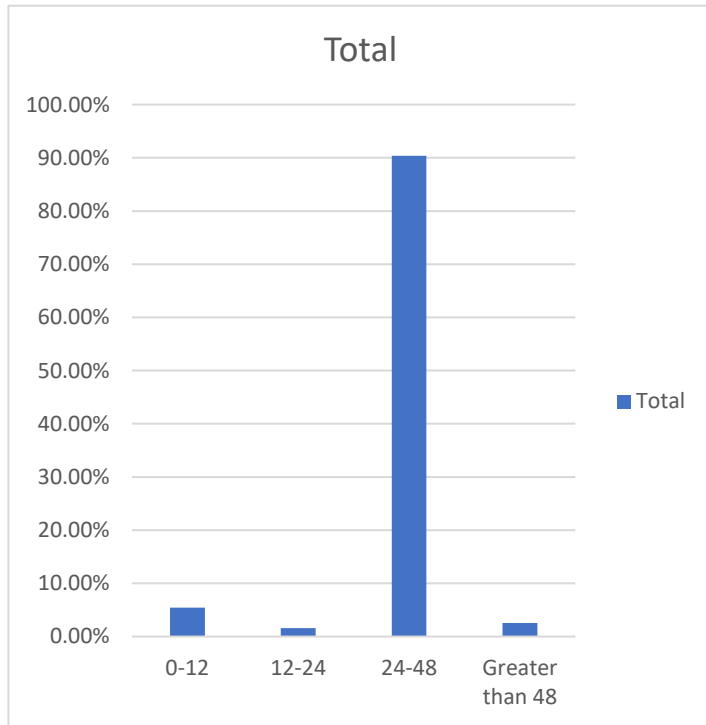


TOTAL (BY NUMBER)

BIRTH TO COLLECTION NUMBER (Goal 24-48 hours)



0-12	147
12-24	43
24-48	2430
Greater than 48	69



COLLECTION TO RECEIPT PERCENT
(Goal within three days)



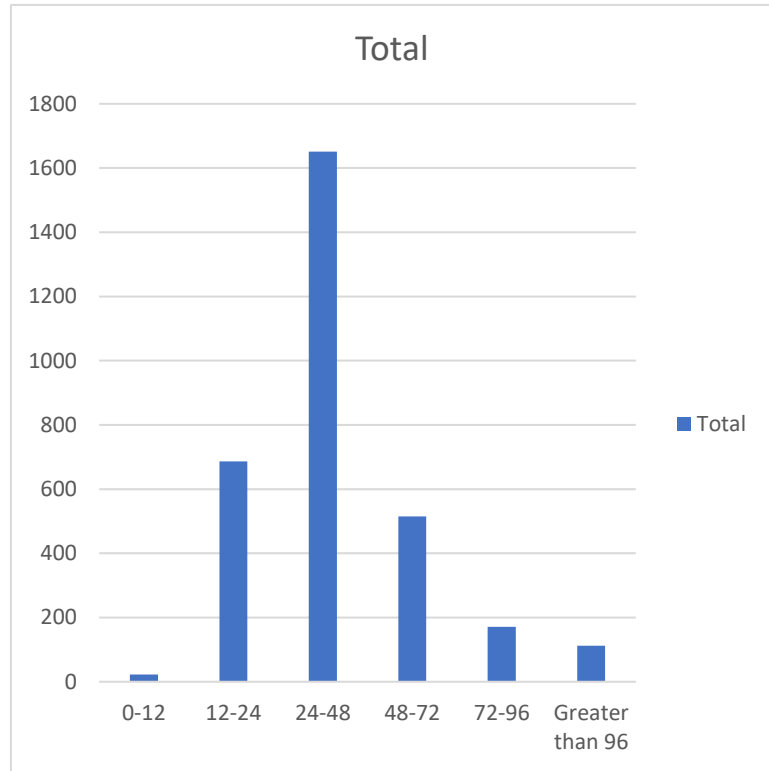
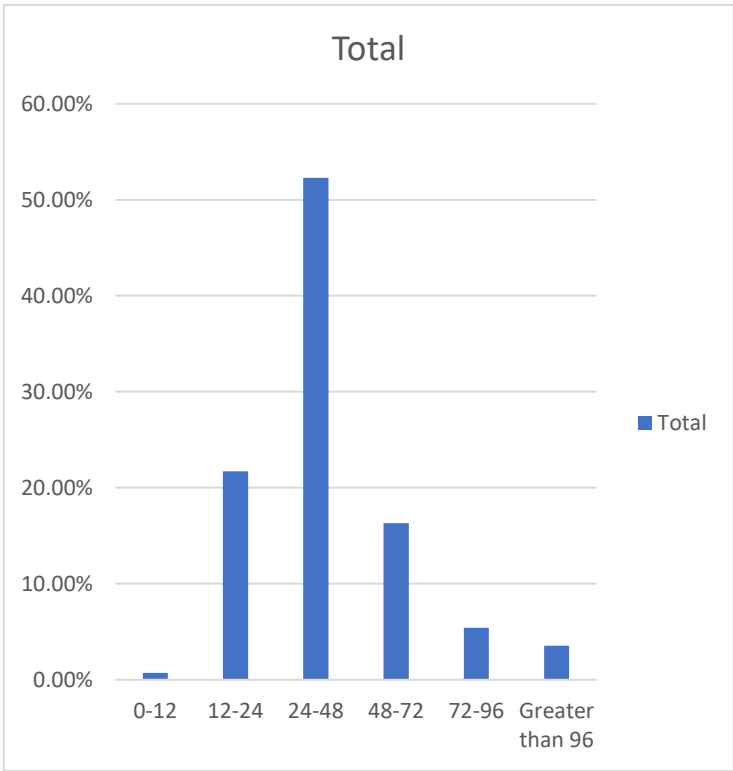
0-12	0.73%
12-24	21.72%
24-48	52.28%
48-72	16.31%
72-96	5.41%
Greater than 96	3.55%



COLLECTION TO RECEIPT NUMBER
(Goal within three days)



0-12	23
12-24	686
24-48	1651
48-72	515
72-96	171
Greater than 96	112



RECEIPT TO APPROVAL PERCENT (Goal within five days)

RECEIPT TO APPROVAL NUMBER (Goal within five days)

--	--

--	--

--	--

--	--

0-12	3.23%
12-24	0.06%
24-48	46.45%
48-72	16.66%
72-96	24.41%
Greater than 96	9.18%

0-12	102
12-24	2
24-48	1467
48-72	526
72-96	771
Greater than 96	290

