

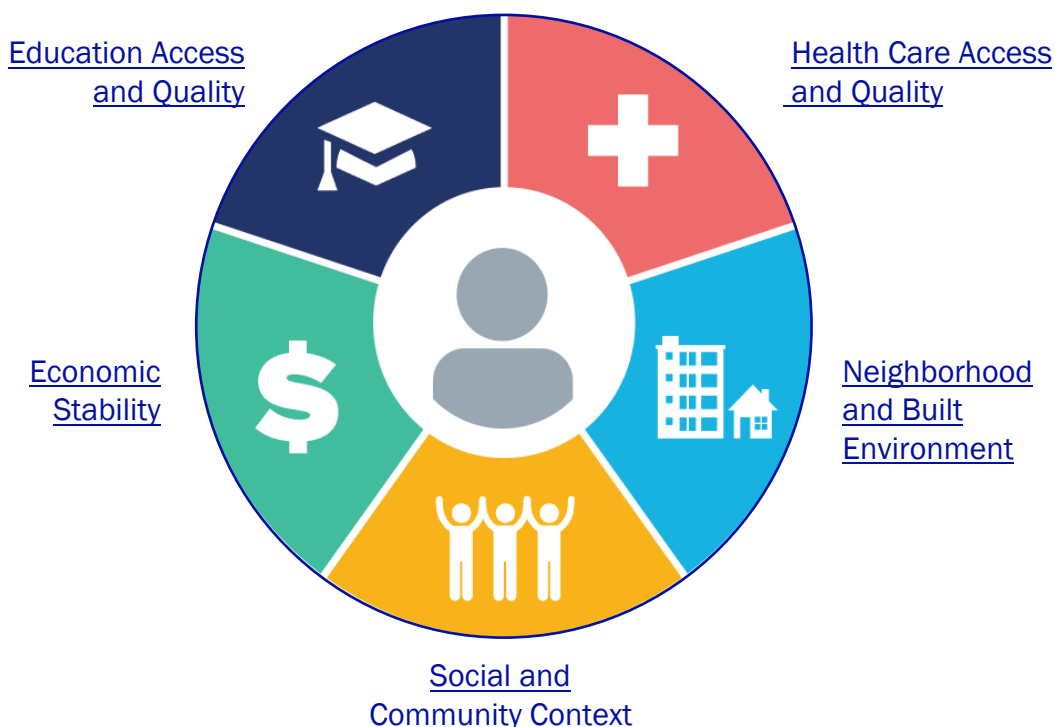


Community Health Data

All Montanans deserve equal opportunity to make choices that lead to good health for them and their families. To ensure such opportunity, public health leaders and partners need an understanding of the health of our homes, schools, and communities. The environments in which we live, learn, work, and play affect everyone's health and wellbeing. This factsheet presents dashboards maintained by various local, state, tribal, and national organizations that provide community-level data organized by the Social Determinants of Health categories established by [Healthy People 2030](#), shown below. Each domain name in the figure below is hyperlinked to literature reviews maintained by Healthy People 2030 with data about the topic's influence on health and wellbeing.

Additionally, the [American Indian Governance and Policy Institute at the University of Montana](#) has developed a model for "Key Social Factors Influencing American Indian/Alaska Native Health in Indian Country," which you can find on the last page of this resource.

Social Determinants of Health



There is a lot of information, or data, that can help you learn more about the health of your community. Some words used to describe data are:

- Primary data (data collected by you),
- Secondary data (data collected by someone else),
- Qualitative data (words, like from focus groups and interviews), and
- Quantitative data (numbers, like from surveys with multiple choice questions).

Public health departments have access to *secondary quantitative* data that can tell you about your community in terms of chronic disease and disability, communicable and infectious disease, behavioral health, and more. [Montana Community Health Insights](#) is available as of September 2022 with data from Montana-specific public health surveillance sources, including vital statistics, hospital discharge, emergency department discharge, the Behavioral Risk Factor Surveillance Survey (BRFSS), and the cancer registry. When working with cross-sector partners, it may be helpful to refer to the dashboards included below to be more inclusive of data sources with which your partners and stakeholders may be more familiar or have more experience using.

Explore the [Public Health and Safety Division Map Gallery](#) to learn more about public health resources in your community. Topics include community-based programs to prevent and manage chronic disease, EMS and hospital resources, WIC locations, and more.

Use the [Montana Public Health Data Resource Guide](#) to learn more about what data public health professionals collect, use, and share.

Reach out to HSAHealthierMontana@mt.gov to be connected to a public health professional who could answer questions about the data or suggest additional resources.

Please remember:

- That all data come with limitations.
- The data sources listed here are meant to start a conversation within your community.

Things to consider

There are several things to keep in mind while using this resource. First, the best data to describe your community is collected by the community for the community.

Second, each dashboard is maintained by different agencies on different timelines using different methods that may not be comparable with each other across years and/or geographic areas. For example, some are maintained by government entities at the state or national level and others by non-profit organizations, among other groups and sectors. Users should consider the following for each dashboard:

- Funding source,
- Methods used in data analysis and display,
- Data sources, and
- Publication date.

Lastly, many of these data sources come from institutions that historically implemented policies and practices that led to data underrepresenting or misrepresenting some groups, like people living in rural areas. This can contribute to social, environmental, and economic barriers to people living their healthiest lives. Some questions you can ask as you review the data to avoid adding to these barriers include:

1. Do the data reflect what I see in my community?
2. Do the data reflect all the populations in my community?
3. Who needs to be at the table to discuss what these data points mean?
4. What other data do I need to collect to have a better picture of the health of my community?
5. How do these data contribute to differences in health status for groups in my community that are unfair and can be changed?
6. What year(s) do these data reflect? What has happened since they were published and how could those events have influenced a difference between the reported data and our current lived experience? *For example, data published in 2019 or earlier won't reflect changes in communities as a result of the COVID-19 pandemic.*

Visit the [A Healthier Montana](#) website for more resources about collaboratively improving the health of Montanans and using the State Health Improvement Plan, which includes shared health priorities identified by cross-sector partners, objectives for monitoring improvement over time, and proposed strategies for driving improvement.

Social and Community Context Data

Tool name: Montana Children's Health Data Dashboard

Tool type: Interactive dashboard

Web address: <https://montanakidscount.org/montana-childrens-health-data-dashboard>

Available by county? Yes

Available by reservation? No

Notes: This dashboard highlights ten shared measures identified by early childhood health stakeholders. Stakeholders and early childhood coalitions can use these measures to track outcomes and demonstrate the impact of their work. This work was led by Healthy Mothers Healthy Babies and the [Montana Children's Health Data Partnership Project](#).

Tool name: Prevention Needs Assessment

Tool type: Reports

Web address: <https://montana.pridesurveys.com/#reports>

Available by county? Yes

Available by reservation? Yes, under the "reports" tab users can find school area profiles for most tribal nation school areas in Montana.

Notes: The Prevention Needs Assessment is a survey among students in grades 8, 10, and 12 assessing risky behaviors, such as use of alcohol and commercial tobacco, school dropout, delinquency, and violence, as well as risk and protective factors. In even years, schools have the option to collect data from grades 7, 9 and 11.

Tool name: Youth Risk Behavior Survey

Tool type: Factsheets and reports

Web address: <https://opi.mt.gov/Leadership/Data-Reporting/Youth-Risk-Behavior-Survey>

Available by county? Yes

Available by reservation? Not by individual reservations, but results for students on or near reservations and in urban schools are available.

Notes: The YRBS provides insight into health-risk behaviors as reported by Montana youth in six areas. Unintentional injuries and violence, commercial tobacco use, alcohol and drug use, sexual behaviors related to unintended pregnancy and sexually transmitted infections, unhealthy dietary behaviors, and physical inactivity are included. Data are collected in odd years and include grades 9 through 12.

Tool name: Population Dashboard

Tool type: Interactive dashboard

Web address: <https://ceic.mt.gov/People-and-Housing/Population>

Available by county? Yes

Available by reservation? No

Notes: The CEIC also provides links at this website to tables and maps that show county populations for single or multiple years and by both age and race. You can also access population projections.

Tool name: Whole Community Approach to Emergency Planning

Tool type: Factsheets

Web address: http://mtdh.ruralinstitute.umt.edu/?page_id=6292

Available by county? Yes

Available by reservation? No

Notes: The factsheets available from the Montana Disability and Health Program show US Census Bureau data by county for the six functional needs categories. Of particular interest may be number or percent of community members that identify as having: 1) hearing difficulty, 2) vision difficulty, 3) cognitive difficulty, 4) mobility or ambulatory difficulty, 5) self-care difficulty, and 6) independent living difficulty.

Tool name: Mental Wellness Index Tool

Tool type: Interactive dashboard

Web address: <https://sjp.mitre.org/mwi>

Available by county? No, this dashboard is available by ZIP code.

Available by reservation? No, this dashboard is available by ZIP code.

Notes: This tool provides a score for each US ZIP code. A higher score shows more assets supporting mental wellness and a lower score shows more obstacles to mental wellness. The index considers data related to healthcare access, social determinants of health, and overall health status.

Tool name: Population Migration Dashboard

Tool type: Interactive dashboard

Web address: <https://lmi.mt.gov/Home/population-migration>

Available by county? Yes

Available by reservation? No

Notes: This dashboard shows state-to-state migration rates, or the number of people who have moved in to and out of Montana. It also shows how many people have moved from one Montana county to another.

Tool name: Public Assistance Dashboard

Tool type: Interactive dashboard

Web address: <https://dphhs.mt.gov/interactivedashboards/publicassistancedashboard>

Available by county? Yes

Available by reservation? No

Notes: This dashboard shows the number of applicants from Montanans for public assistance programs (SNAP, TANF, and Medicaid) as well as the total number of participating individuals and households across the state and by county.

Tool name: Social Vulnerability Index

Tool type: Interactive dashboard

Web address: <https://svi.cdc.gov/map.html>

Available by county? Yes

Available by reservation? No

Notes: This map allows you to click on each county in the state to access a vulnerability score that was developed for use in a community's emergency planning efforts. This score describes a community's ability to handle and/or respond to a disaster.

Tool name: Healthy Montana Families Needs Assessment

Tool type: Interactive dashboard

Web address: <https://dphhs.mt.gov/ecfsd/HMFNeedsAssessment>

Available by county? Yes

Available by reservation? Some- reservation areas are indicated and reservation-specific data about children entering foster care are available.

Notes: This dashboard presents data on concentrations of risk relating to Montana Maternal, Infant, and Early Childhood Home Visiting (MIECHV) Needs Assessment.

Economic Stability Data

Tool name: Local Area Profiles Dashboard

Tool type: Interactive dashboard

Web address: <https://lmi.mt.gov/LocalAreaProfiles>

Available by county? Yes

Available by reservation? Yes

Notes: The dashboard provides labor force statistics, including employment and unemployment rates, employment industries, wages, and income.

Tool name: Job Tracking Dashboard

Tool type: Interactive dashboard

Web address: <https://lmi.mt.gov/Home/Job-Tracking>

Available by county? Yes

Available by reservation? Yes

Notes: This dashboard shows the size of the current labor force in Montana compared with the country and other states. You can also compare counties and reservations in Montana with each other to show change over time.

Tool name: Living Wage Calculator

Tool type: Webpage

Web address: <https://livingwage.mit.edu/states/30/locations>

Available by county? Yes

Available by reservation? No

Notes: This website has tables developed by the Massachusetts Institute of Technology (MIT) to show the living wage, poverty wage, and minimum wage for households with 1 adult, 2 adults (1 working), and 2 adults (both working), as well as the cost of typical expenses for a family and the typical annual salary for working adults in the area.

Tool name: Poverty USA Maps & Data

Tool type: Interactive dashboard

Web address: <https://www.povertyusa.org/data/2018/MT>

Available by county? Yes

Available by reservation? No

Notes: This dashboard shows information about the number of people, both statewide and by county, living in poverty. It includes estimates for the number of people living in poverty by race, gender, employment status, age, and disability status.

Tool name: Drug Overdose Deaths in the United States by Poverty

Tool type: Interactive dashboard

Web address: <https://opioidmisusetool.norc.org/>

Available by county? Yes

Available by reservation? No

Notes: This tool shows poverty levels, educational attainment, broadband access, median household income, and other indicators of economic wellbeing by county alongside drug overdose rates.

Tool name: Montana's Registered Apprenticeship Program

Tool type: Interactive dashboard

Web address: <https://dli.mt.gov/data-dashboards/montana-registered-apprenticeship-program>

Available by county? Yes

Available by reservation? No

Notes: This dashboard shows active apprenticeship opportunities by occupation in Montana counties.

Education Access and Quality Data

Tool name: Growth and Enhancement of Montana Students (GEMS)

Tool type: Interactive dashboard

Web address: <https://gems.opi.mt.gov/>

Available by county? Yes, if referenced by school district.

Available by reservation? No

Notes: The GEMS dashboard provides data about Montana's educational community to help inform users about the current status and successes of Montana schools.

Tool name: Montana University System Dashboards

Tool type: Interactive dashboards

Web address: <https://mus.edu/data/dashboards/>

Available by county: No, data are available by campus in the Montana University System.

Available by reservation: No, data are available for American Indian students overall by campus but not by reservation or tribal affiliation.

Notes: There are several dashboards to explore student experience in the Montana University System, including first time freshman, degrees awarded, headcounts, and workforce development that could be of importance to communities with a public higher education campus.

Neighborhood and Built Environment Data

Tool name: Housing Dashboard

Tool type: Interactive dashboard

Web address: <https://ceic.mt.gov/People-and-Housing/Housing>

Available by county? Yes

Available by reservation? Yes

Notes: This dashboard maintained by Montana Department of Commerce can show data such as total housing units, occupancy types and status, home values, home ownership versus rental status.

Tool name: Offense and Sentencing Data Dashboard

Tool type: Interactive dashboard

Web address:

<https://cor.mt.gov/DataStatsContractsPoliciesProcedures/DataPages/DataReportsandDataDownloads>

Available by county? Yes

Available by reservation? No

Notes: This dashboard presents offenses by classification and sentence type and the top 10 offenses for both males and females, both statewide and by county.

Tool name: Home Prices Dashboard

Web address: <https://lmi.mt.gov/Home/Home-Prices>

Available by county? Yes, but not all.

Available by reservation? No

Notes: This dashboard shows home values in Montana compared with the US and some Montana counties.

Tool name: Eviction Lab

Tool type: Interactive map

Web address: <https://evictionlab.org/>

Available by county? Yes

Available by reservation? No

Notes: This interactive map shows eviction estimates for every county in the United States between 2000 and 2018.

Tool name: Discover DEQ Throughout Montana

Tool type: Interactive map

Web address: <https://discover-mtdeq.hub.arcgis.com/>

Available by county? Yes, but the user needs to search by topic, not by county.

Available by reservation? Yes, but the user needs to search by topic, not by reservation.

Notes: This interactive map shows Department of Environmental Quality data, including cleanup and remediation, air quality, energy, mining, waste management, water quality, permitting, and compliance.

Tool name: Crime Dashboards

Tool type: Interactive dashboards

Web address: <https://mbcc.mt.gov/Data/Montana-Reports/Crime-Dashboards>

Available by county? Yes

Available by reservation? No

Notes: This landing page lets the user navigate to dashboards on a variety of crime-related statistics, including violent crime and domestic violence.

Tool name: Heat & Health Tracker

Tool type: Interactive dashboard

Web address: <https://ephtracking.cdc.gov/Applications/heatTracker/>

Available by county? Yes

Available by reservation? No

Notes: This dashboard provides historic maximum daily temperatures, current season temperatures, and information about heat vulnerability in your community.

Tool name: Environmental Justice Dashboard

Tool type: Interactive dashboard

Web address: <https://ephtracking.cdc.gov/Applications/ejdashboard/>

Available by county? Yes

Available by reservation? No

Notes: This dashboard includes the percent of impervious surface, seniors living alone, current asthma, and mobile home housing units, as well as a map showing levels of PM 2.5, ozone, heat, precipitation, and flooding.

Tool name: Climate and Economic Justice Screening Tool

Tool type: Interactive map

Web address: <https://screeningtool.geoplatform.gov/en/#3/33.47/-97.5>

Available by county? Yes

Available by reservation? No

Notes: This dashboard was developed by the [Justice40 Initiative](#) to identify communities that have been marginalized, underserved, and overburdened by pollution.

Health Care Access and Quality Data

Tool name: Spatial Analysis of Healthcare Needs in Montana

Tool type: Interactive dashboard

Web address: <https://mt-dphhs-msu-disease-sscmsu.hub.arcgis.com/>

Available by county? Yes

Available by reservation? No, but tribal boundary lines are overlaid on the maps.

Notes: This collaboration between Montana DPHHS and Montana State University examines risk factors and spatial correlations between food deserts, cardiovascular disease, and diabetes.

Tool name: Montana Response: COVID-19

Tool type: Interactive dashboard

Web address: <https://covid19.mt.gov/>

Available by county? Yes

Available by reservation? No

Notes: The Montana Response: COVID-19 dashboard includes vaccination rates, lab-verified cases of COVID-19, and deaths due to COVID-19 by county.

Tool name: PLACES: Local Data for Better Health

Tool type: Interactive dashboard

Web address: <https://www.cdc.gov/places/index.html>

Available by county? Yes

Available by reservation? No

Notes: PLACES provides a county level estimation of the burden of disease in your county. PLACES uses BRFSS and Census data to estimate health outcomes, prevention behaviors, and unhealthy behaviors in a county. Select the indicator you are interested in and hover over your county to see the estimated prevalence.

Tool name: Fatal Injury and Overdose Indicators

Tool type: Interactive dashboard

Web address: <https://dphhs.mt.gov/publichealth/EMSTS/InjuryandOverdoseIndicators-Fatal>

Available by county? Yes

Available by reservation? No, but reservation boundaries are identified on the map.

Notes: This tableau dashboard from the Montana Injury Prevention Program shows a map of Montana with the number of deaths and age-adjusted death rate for injuries, including suicide, homicide, unintentional injury, and drug overdose. Data are available starting in 2009.

Tool name: Montana Medicaid Births Dashboard

Tool type: Interactive dashboard

Web address: <https://dphhs.mt.gov/interactivedashboards/mtmedicaidbirthsdashboard>

Available by county? Yes

Available by reservation? No

Notes: The Montana Medicaid Births Dashboard shows information about all births in Montana compared with births covered by Medicaid. It features total number of births, adequate prenatal care, premature and low birthweight, and average age of mother.

Tool name: Montana Pregnancy Risk Assessment Monitoring System (PRAMS)

Tool type: Interactive dashboard

Web address: <https://dphhs.mt.gov/ecfsd/prams>

Available by county? No, but information is available by county population size.

Available by reservation? No

Notes: Montana PRAMS collects data that is representative of Montana's mothers and babies to track trends, set targets, and identify risk and protective factors for health outcomes. These data can be compared to PRAMS estimates for the country and other states.

Tool name: Occupational Licensing Dashboard

Tool type: Interactive dashboard

Web address: <https://dli.mt.gov/data-dashboards/Occupational-Licensing>

Available by county? Yes

Available by reservation? No

Notes: This dashboard can show the number of licensed occupations by Montana Boards listed in your county, such as the Board of Nursing, Board of Behavioral Health, and more.

Tool name: Recovery Ecosystem Index Map

Tool type: Interactive map

Web address: <https://rei.norc.org/>

Available by county? Yes

Available by reservation? No

Notes: This index of the strength of support networks for people recovering from substance use includes scores for treatment, continuum of support, and social/infrastructure quality.

Summary Data Sources

The following organizations have developed comprehensive websites that use data to provide details about how where we live, work, learn, and play impact our health and the health of our communities that don't fit in just one of the categories above. As mentioned earlier, tools are regularly added and updated at the [Public Health and Safety Division Map Gallery](#) on a variety of topics related to health in Montana.

[My Tribal Area](#): This resource from the US Census Bureau can provide information about people, jobs, housing, the economy, and education for people living on reservation land.

[Montana State Library](#): The library holds geographic information for Montana on a variety of topics that you can explore and work with a state employee to learn more about.

[Headwaters Economics](#): This Montana-based research group provides a variety of free tools to learn more about the socioeconomic status of your community, at-risk neighborhoods, wildfire risk, and impacts of trails and outdoor recreation. Socioeconomic profiles are available for counties and some reservations.

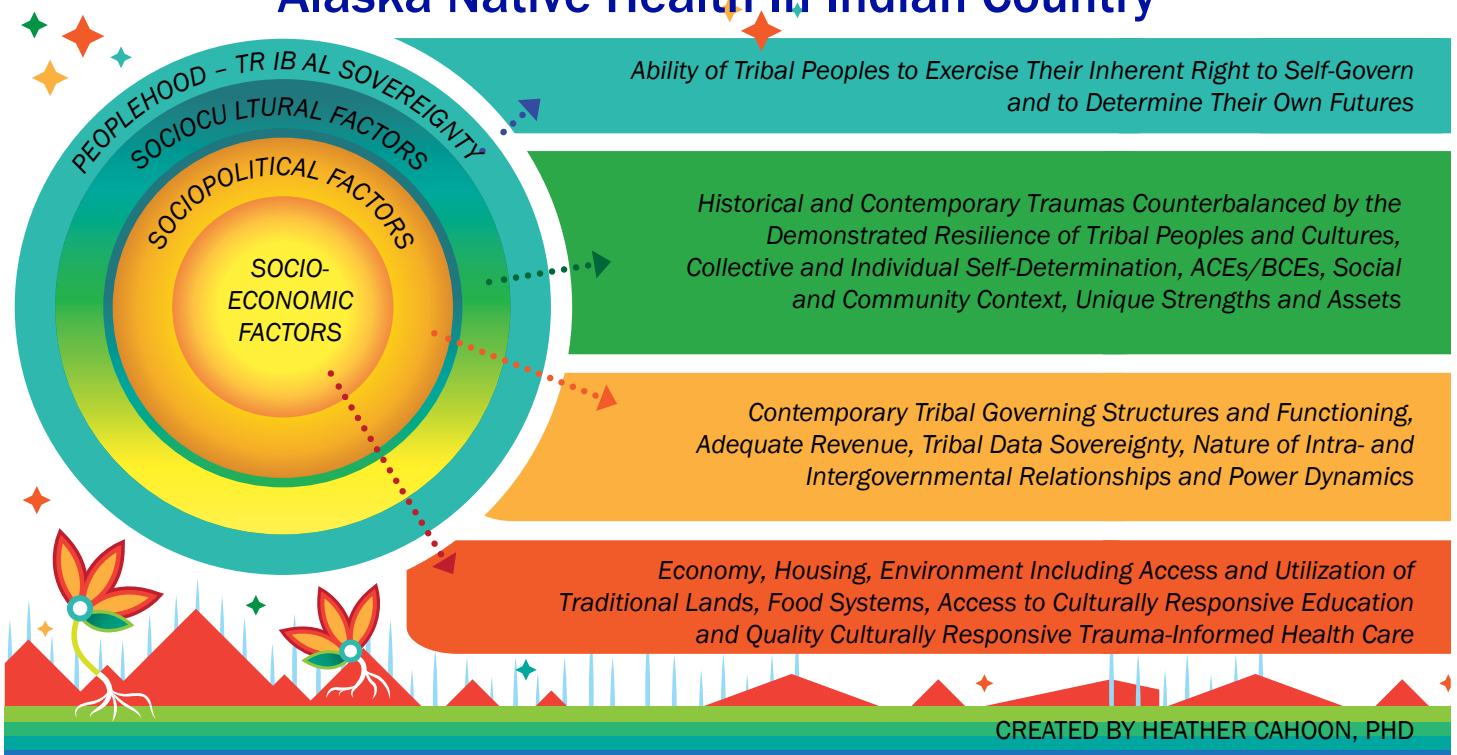
[Kids Count Data](#): The Kids Count Dashboard provides detailed data on demographic indicators, economic well-being indicators, education indicators, family and community indicators, health indicators, and safety and risky behaviors indicators. You can create a custom report by selecting "Create a Custom Report" and selecting your county and the indicators you are interested in.

[County Health Rankings and Roadmaps](#): Many factors influence the health and wellbeing of your community. County health rankings and roadmaps uses data to estimate health measures in your community and rank the health of your state and county against others.

[ArcGIS Living Atlas of the World](#): This collection of interactive maps spans topics from housing, neighborhoods, health, and education to infrastructure and the environment.

[Rocky Mountain Tribal Epidemiology Center \(RMTEC\)](#): RMTEC maintains a dashboard about COVID-19 and another about the places people live, learn, work, and play that can impact health for tribal nations in Montana and Wyoming, including data on demographics, employment, insurance, education, and poverty.

Key Social Factors Influencing American Indian Alaska Native Health In Indian Country



Getting Started Worksheet

Use this template for a guided way to begin exploring the resources shared above and start a conversation in your community about how to ensure all Montanans have equal opportunity to make healthy choices for themselves and their families. This template is based on work done by the Park County Health Department in its recent Community Health Assessment and Improvement Plan cycle.

Tip: Refer to the 6 reflection questions on page 3 to help lead a conversation about what you discover.

Describe the population in your community

Topic (sometimes called an indicator or a metric)	Your community (the percentage, rate, or count for the county or reservation of interest)	Benchmark (what the same data source says for the nation, state, or another county for comparison)
Population in 2020		
Population in 2010		
Residents under age 18		
Residents over age 65		
Residents with veteran status		
Residents identifying as American Indian or Alaska Native		
Residents living with one or more disability		
Residents enrolled in Medicaid		
Residents with a high school diploma (or graduation rate)		
Other topic of interest		
Other topic of interest		
Other topic of interest		

Describe the early childhood and family support system in your community

Topic (sometimes called an indicator or a metric)	Your community (the percentage, rate, or count for the county or reservation of interest)	Benchmark (what the same data source says for the nation, state, or another county for comparison)
Children enrolled in free or reduce-price lunch program		
3 rd grade reading proficiency level		
Childcare capacity		
Children enrolled in Healthy Montana Kids free or low-cost healthcare plan		
Births to teenage parents		
Proximity to superfund sites or other environmental hazards		
Other topic of interest		
Other topic of interest		
Other topic of interest		

Describe the economic and housing situation in your community

Topic (sometimes called an indicator or a metric)	Your community (the percentage, rate, or count for the county or reservation of interest)	Benchmark (what the same data source says for the nation, state, or another county for comparison)
Living wage		
Average home price		
Poverty rate		
Median rent		
Average income		
Top employers or sectors for employment		
Broadband access		
Housing availability		
Residents experiencing food insecurity		
Other topic of interest		
Other topic of interest		
Other topic of interest		