

# Montana's Developmental Disabilities Program (DDP): Community Services For Children and Adults

**Presented by:** Lindsey Carter, Bureau Chief  
Developmental Disabilities Program (DDP)

November 30<sup>th</sup> 2023



DEPARTMENT OF  
**PUBLIC HEALTH &  
HUMAN SERVICES**

# Developmental Disabilities Program (DDP)

## Department of Public Health and Human Services

### Medicaid Practice – BHDD

- Children’s Mental Health Bureau
- Adult Behavioral Health
- Developmental Disabilities Program
- Fiscal (financial services)

### DDP - Program Support

- Medicaid Program Officers
- Eligibility Specialist
- Transition Specialist

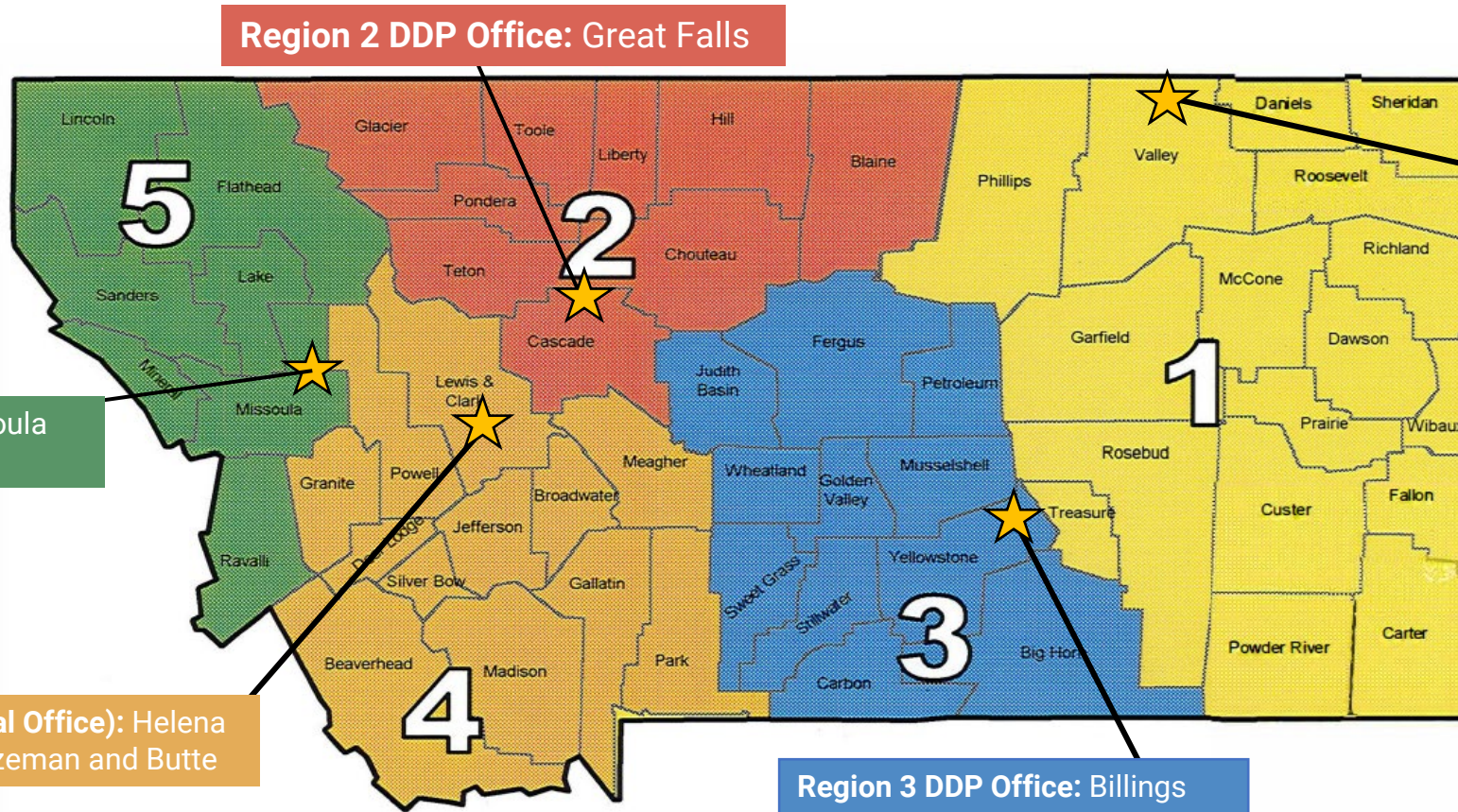
### DDP - Community Services

- Regional Managers
- Quality Improvement Specialists (QIS)
- Case Management Services (limited areas)

# Developmental Disabilities Program (DDP) Organizational Chart



# Montana DDP Regions



Region 5 DDP Office: Missoula  
Satellite Office: Kalispell

Region 4 DDP (Central Office): Helena  
Satellite Offices: Bozeman and Butte

Region 3 DDP Office: Billings

Region 1 DDP Office: Glasgow  
Satellite Office: Miles City

Region 2 DDP Office: Great Falls

# DDP Eligibility – Montana Codes Annotated (MCA) 53-20-202

<p><b>Montana Codes Annotated (MCA) 53-20-202</b></p>	<p>(3) “Developmental Disabilities” means disabilities attributable to intellectual disability, cerebral palsy, epilepsy, autism, or any other neurologically disabling condition closely related to intellectual disability and requiring treatment similar to that required by intellectually disabled individuals if the disability originated before the person attained age 18, has continued or can be expected to continue indefinitely, and results in the person having a substantial disability.</p>
---	--





# Determining Eligibility For Services To Persons With Developmental Disabilities in Montana

<p><b>Standardized Process to Conduct Eligibility</b></p>	<ul style="list-style-type: none"><li>• Reference manual<sup>1</sup> used to determine eligibility for both children and adults seeking services from the Developmental Disabilities Program</li><li>• Current revision involves an integration of the new concepts/terms in DSM-5 (2013) and is utilized by the DDP Eligibility Specialist in the decision-making process</li><li>• Manual consists of Chapters 1 – 9 and Appendices A – 0 (includes both child and adult Eligibility Determination Forms and State, Federal, and AAIDD definitions of ID)</li></ul>
---	---

1. *Determining eligibility for services to persons with developmental disabilities in Montana: A Staff Reference Manual (6th Edition – 2013)*, William Cook, PhD.

# Operational Eligibility Criteria

<b>Operational Eligibility</b>	<ul style="list-style-type: none"><li>• IQ less than or equal to 70 or with supporting rationale if over 70</li><li>• Adaptive Behavior Composite (ABC) less than or equal to 70 or with supporting rationale if over 70</li><li>• Results in functional limitations in 3 or more major life activities: self-care, receptive/expressive language, learning, mobility, self-direction, capacity for independent living, and/or economic self-sufficiency</li><li>• Must have documentation that developmental disability originated before age 18</li><li>• Must have statement that disability is expected to continue indefinitely</li><li>• Person must be in need of treatment required by persons with Intellectual Disability such as the need for combination and sequence of special, interdisciplinary, or generic care, treatment or other life-long/extended duration services that are individually planned/coordinated</li></ul>
--------------------------------	---

# Eligibility For Autism Spectrum Disorder (ASD)

## Autism Spectrum Disorder (ASD)

### Montana Eligibility Guidelines

- Significant impairment of intellectual functioning

**AND**

- Level 2\* or Level 3\*\* severity rating, as per DSM-5, for both social communication and restrictive repetitive behaviors

\*Level 2: Requiring Substantial Support

\*\*Level 3: Requiring Very Substantial Support

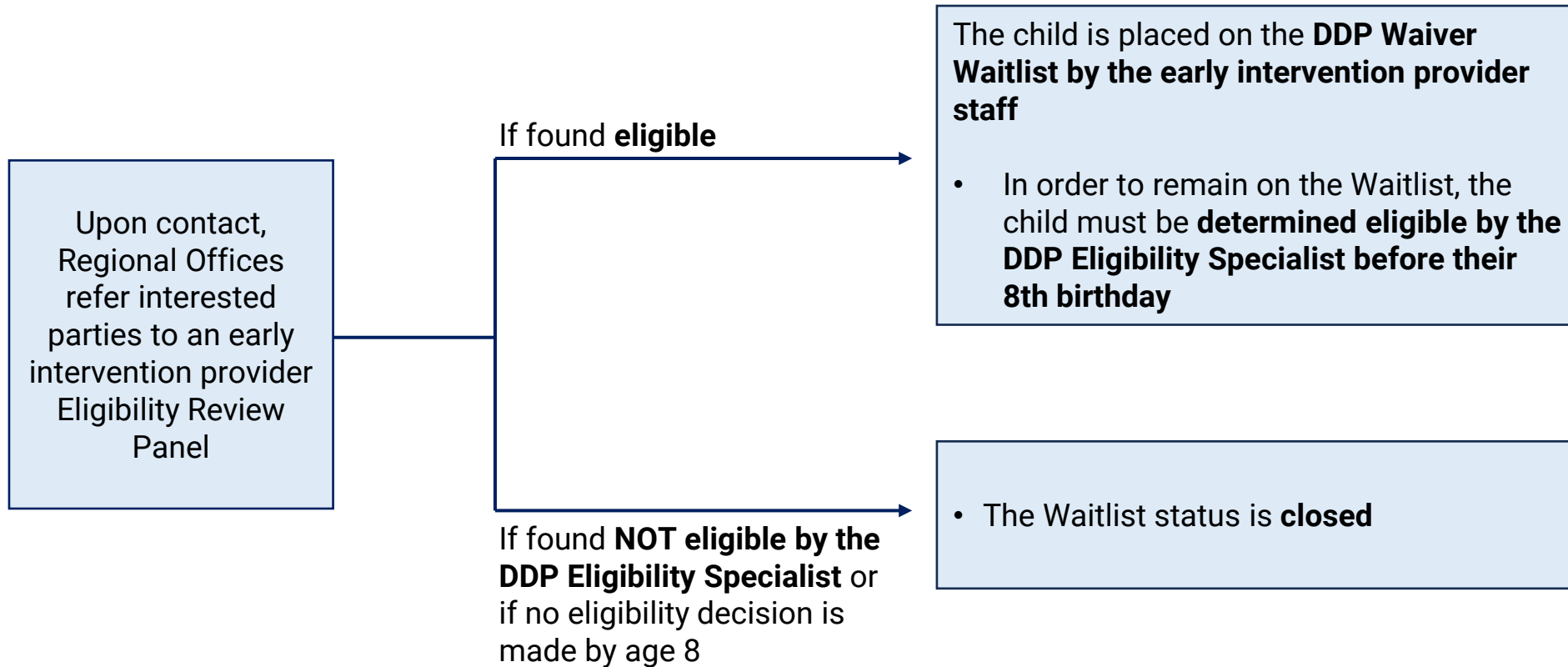




# General Eligibility Requirements - Under Age 8

<b>Who Determines Eligibility?</b>	<ul style="list-style-type: none"><li>• Early Childhood Services of the Early Childhood and Family Support Division (ECFSD) conduct an Eligibility Review Panel (ERP) and sign off on eligibility</li></ul>
<b>Eligibility Requirements</b>	<ul style="list-style-type: none"><li>• Diagnosis of physical/mental condition with high probability of resulting in developmental disability</li></ul> <p style="text-align: center;"><b>- OR -</b></p> <ul style="list-style-type: none"><li>• 50% delay in 1, or 25% delay in 2 or more of the following areas:<ul style="list-style-type: none"><li>○ Cognitive (thinking, reasoning skills) development*</li><li>○ Physical development (including vision, hearing)</li><li>○ Speech/language development</li><li>○ Social/emotional development</li><li>○ Self-help skills</li></ul></li></ul> <p><i>*Current psychological evaluation is considered within the last 1 – 2 years for under age 6, within the last 3 years for over age 6</i></p>

# Eligibility Process - Under Age 8

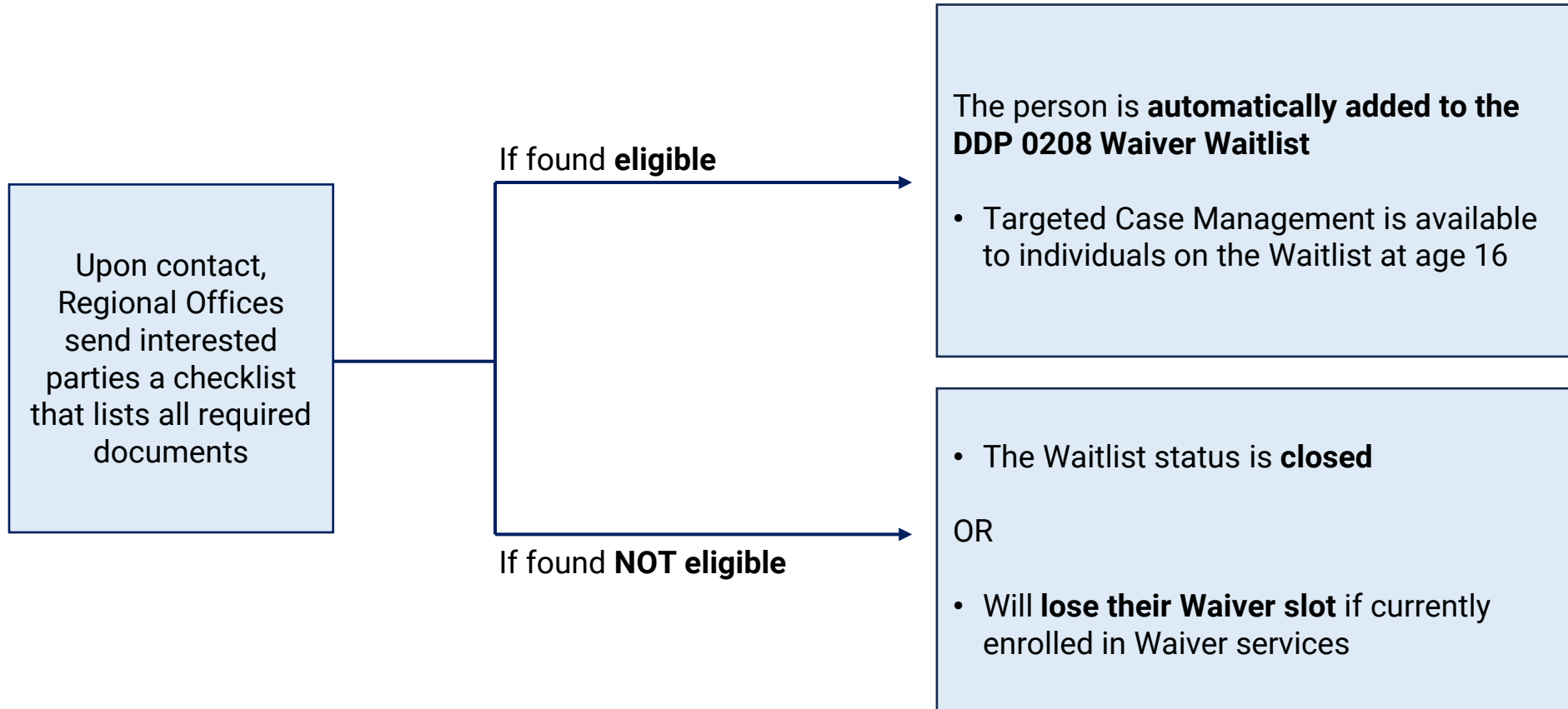


# General Eligibility Requirements Ages 8+ (Including Adults)

<b>Who Determines Eligibility?</b>	<ul style="list-style-type: none"><li>• DDP Eligibility Specialist determines eligibility (can be made as early as age 6)</li></ul>
<b>Eligibility Requirements</b>	<ul style="list-style-type: none"><li>• Current psychological evaluation report (within the last 3 years)</li><li>• Vineland adaptive behavior assessment results</li><li>• Part 1 of the Eligibility Determination Form</li><li>• Extra documentation (school, medical, other assessments, etc.) may be requested</li></ul>



# Eligibility Process - Ages 8+ (Including Adults)



# State Plan Medicaid Services



DEPARTMENT OF  
PUBLIC HEALTH &  
HUMAN SERVICES

# Targeted Case Management

## Targeted Case Management Overview

<b>Overview</b>	<ul style="list-style-type: none"><li>• There is no waitlist for case management services</li><li>• AWARE, Inc. currently provides targeted case management services statewide</li><li>• DDP provides targeted case management services in Regions 2 (limited), 3, 4, and 5</li></ul>
<b>Individuals Served</b>	<ul style="list-style-type: none"><li>• Individuals ages 16 and older who are DD eligible, who are not receiving other case management services</li><li>• Under age 16 if enrolled in the DDP 0208 Comprehensive Waiver</li></ul>
<b>Key Activities</b>	<ul style="list-style-type: none"><li>• Comprehensive assessment and periodic reassessment</li><li>• Development and periodic changes of a specific care plan</li><li>• Referral and related activities</li><li>• Monitoring and follow-up activities</li></ul>





# Applied Behavior Analysis (ABA) Services

## Applied Behavior Analysis (ABA) Services Overview

### Overview

- Applied Behavior Analysis (ABA) is a type of therapy that can improve social, communication, and learning skills through positive reinforcement
- This therapy is provided by a Board-Certified Behavior Analyst (BCBA) licensed in Montana
- ABA services occur face-to-face and may be delivered to the person in the home, community, or clinical (BCBA office) setting
- Services may also be delivered to two or more people at the same time, or multiple people receiving ABA services in a group setting
- The BCBA may also discuss the person's treatment plan or provide instruction to the parent, guardians, or caregivers; or multiple sets of parents, guardians, or caregivers at the same time



# Applied Behavior Analysis (ABA) Services, Continued

## Applied Behavior Analysis (ABA) Services Overview

<b>Eligibility</b>	<ul style="list-style-type: none"><li>• People who are Medicaid eligible with a diagnosis of Autism Spectrum Disorder (ASD) and no older than age 20<ul style="list-style-type: none"><li>○ ABA services may now also be available for people who are Medicaid eligible and:<ul style="list-style-type: none"><li>▪ Were previously found eligible for the Developmental Disabilities Program and no older than age 20; or</li><li>▪ Have a qualifying mental health diagnosis and are no older than age 17, or no older than age 20 and enrolled in a high school program</li></ul></li></ul></li><li>• Other changes include waiving the initial prior authorization process, expanding CPT codes available, and providing more flexibility to the BCBA provider</li></ul>
<b>Services Included</b>	<ul style="list-style-type: none"><li>• Assessment</li><li>• Treatment Plan Development</li><li>• Service Delivery by a Registered Behavior Technician or Intermediate Professional</li><li>• Clinical supervision by a BCBA</li></ul>



# Waiver Services



DEPARTMENT OF  
**PUBLIC HEALTH &  
HUMAN SERVICES**

# 0208 Comprehensive Waiver: HCBS Waiver For Individuals With Developmental Disabilities Overview

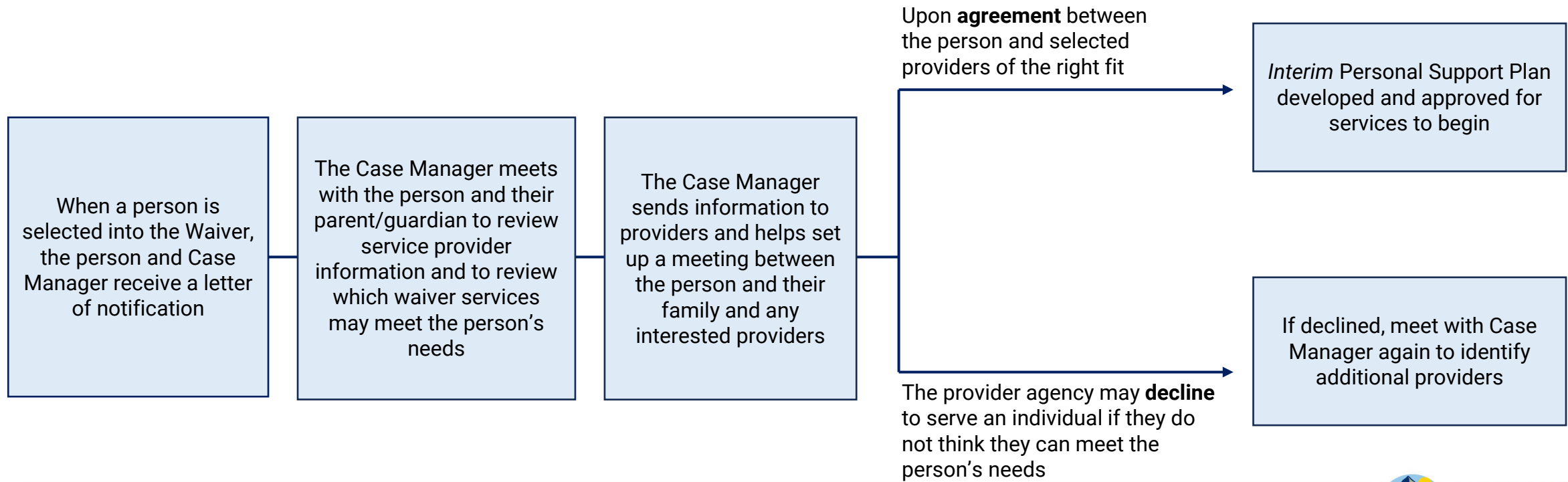
<p><b>Summary</b></p>	<ul style="list-style-type: none"> <li>• <b>Provide Home and Community-Based (HCBS) Services to individuals who otherwise would be eligible to be in an institution</b></li> <li>• <b>Currently serves approximately 2,500 individuals and serves persons with intellectual disabilities throughout the lifespan</b></li> <li>• <b>More than 70 enrolled providers throughout the State</b></li> </ul>
<p><b>Eligibility</b></p>	<ul style="list-style-type: none"> <li>• Individuals must be Medicaid eligible to receive HCBS services</li> <li>• Must access and use State plan services before using Waiver services</li> </ul>
<p><b>Services Available</b></p>	<ul style="list-style-type: none"> <li>• More than <b>30 different waiver services</b> available (see next slide)</li> <li>• Services delivered by:             <ul style="list-style-type: none"> <li>○ Traditional Provider Agencies</li> <li>○ Self-Direct Options (direct hire of non-agency workers by family)</li> </ul> </li> </ul>
<p><b>Individualized Annual Cost Plan (average):</b></p>	<ul style="list-style-type: none"> <li>• <b>~\$55,000</b></li> </ul>
<p><b>Cannot Cover</b></p>	<ul style="list-style-type: none"> <li>• Room and board costs</li> <li>• Special education and related services</li> </ul>
<p><b>Waitlist</b></p>	<ul style="list-style-type: none"> <li>• The Waitlist consists of <b>approximately 2,000</b> individuals and selection into the waiver is based on the length of time on the Waitlist, except in some situations (referred to as Reserved Capacity).</li> </ul>

# 0208 Comprehensive Waiver: Available Services

Available Services by Type of Service			
Residential	Day Services	Support Services	Family Support Services
<ul style="list-style-type: none"> <li>Residential Habilitation (Group Home and Supported Living)</li> <li>Homemaker</li> <li>Assisted Living</li> <li>Adult Foster</li> <li>Adult Foster Support</li> <li>Personal Supports</li> </ul>	<ul style="list-style-type: none"> <li>Day Supports and Activities</li> <li>Supported Employment Services</li> <li>Companion</li> <li>Retirement Services</li> </ul>	<ul style="list-style-type: none"> <li>Meals</li> <li>Individual Goods and Services</li> <li>Personal Care</li> <li>Private Duty Nursing</li> <li>Remote Monitoring and Remote Monitoring Equipment</li> <li>Nutritionist</li> <li>Occupational Therapy</li> <li>Physical Therapy</li> <li>Specialized Medical Equipment and Supplies</li> <li>Environmental Modifications</li> <li>Personal Emergency Response System</li> <li>Behavioral Support Services</li> <li>Psychological Services</li> <li>Speech Therapy</li> <li>Transportation</li> <li>Supports Brokerage</li> <li>Community Transition Services</li> </ul>	<ul style="list-style-type: none"> <li>Caregiver Training and Support</li> <li>Respite</li> </ul>

# 0208 Comprehensive Waiver: Selection Process

Once an individual is selected off the Waitlist and into services, DDP processes outline how the individual gains access to service. The person, with the assistance of their Case Manager, has 10 working days to reply and accept or decline services. The person then has 90 days to enroll with a provider agency or begin the self-direct enrollment process.





# Personal Support Plan (PSP)

## Personal Support Plan (PSP) – *also referred to as Plan of Care*

<b>Individuals Served</b>	<ul style="list-style-type: none"><li>• Individuals ages 16 and older receiving Case Management services</li><li>• Individuals of any age receiving Waiver services</li></ul>
<b>Review</b>	<ul style="list-style-type: none"><li>• Annual (once a year) Plan of Care required</li><li>• Mid-year PSP review, including reporting of status of goals and objectives</li></ul>

**DDP transitioned to an electronic Plan of Care system called MedCompass in February 2021**



# Waiver Limitations

DDP's waiver authority allows for the waiver to limit the number of people served, limit the resource allocation (cost plans) for participants, and requires Vocational Rehabilitation to cover costs before the waiver. However, the waiver does have limitations that must be adhered to.

Waiver Limitations	
<b>Developmental Disabilities Program (DDP)</b>	<p><u>Cannot:</u></p> <ul style="list-style-type: none"><li>• Require individuals to accept services in a Home and Community-Based Waiver</li><li>• Require a provider to serve an individual they are not already serving</li><li>• Provide housing/shelter</li><li>• Become a person's guardian</li></ul>
<b>Providers</b>	<p><u>Cannot:</u></p> <ul style="list-style-type: none"><li>• Exit an individual from services without following the process outlined in the Administrative Rules of Montana, and without DDP approval</li><li>• Refuse to take an individual back into their services if they do not have an approved exit from services</li></ul>

# DDP Contact Information

Developmental Disabilities Program Information	
<b>Website</b>	<a href="http://dphhs.mt.gov/dsd/developmentaldisabilities">http://dphhs.mt.gov/dsd/developmentaldisabilities</a>
<b>Phone</b>	(406) 444-2995
<b>Address</b>	111 N. Sanders, Room 305/PO Box 4210 Helena, MT 59604

DDP Staff Contact Information			
Position	Name	Phone Number	Email Address
Bureau Chief	Lindsey Carter	(406) 444-2799	<a href="mailto:lcarter2@mt.gov">lcarter2@mt.gov</a>
Medical Director	Dr. Jean Justad	(406) 444-4556	<a href="mailto:Jjustad@mt.gov">Jjustad@mt.gov</a>
Program Support Supervisor	Cathy Murphy	(406) 444-1716	<a href="mailto:catmurphy@mt.gov">catmurphy@mt.gov</a>
Community Services Supervisor	Shannon Cole-Merchen	(406) 444-2799	<a href="mailto:SCole-Merchen@mt.gov">SCole-Merchen@mt.gov</a>
Transition Specialist	Suzanne Rowe	(406) 225-4498	<a href="mailto:suzanne.rowe@mt.gov">suzanne.rowe@mt.gov</a>
Eligibility Specialist	Lisa Nehl	(406) 444-5930	<a href="mailto:lnehl@mt.gov">lnehl@mt.gov</a>
ABA Services	James Lackey	(406) 444-3878	<a href="mailto:James.lackey@mt.gov">James.lackey@mt.gov</a>
Regional Manger (1 & 2)	Patti Engebretsen	(406) 228-8264	<a href="mailto:Patti.Engebretsen@mt.gov">Patti.Engebretsen@mt.gov</a>
Regional Manager 3	Stephanie Marquis	(406) 655-7603	<a href="mailto:Stephanie.Marquis@mt.gov">Stephanie.Marquis@mt.gov</a>
Regional Manager 4	Melinda Cummings	(406) 444-1714	<a href="mailto:Melinda.Cummings.@mt.gov">Melinda.Cummings.@mt.gov</a>
Regional Manager 5	Paula Tripp	(406) 329-5475	<a href="mailto:pmiskuly@mt.gov">pmiskuly@mt.gov</a>

# Developmental Disabilities Continuum of Care

