

Medicaid Tribal Consultation: Substance Misuse Prevention

Behavioral Health &
Developmental Disabilities
Division
12.5.22



Primary Prevention of Substance Misuse

Primary prevention, by far, has been known to be the best strategy to control substance misuse by adopting different types of strategies for preventing drug use at the primary level.



Substance Abuse Prevention and Treatment (SAPT) Block Grant

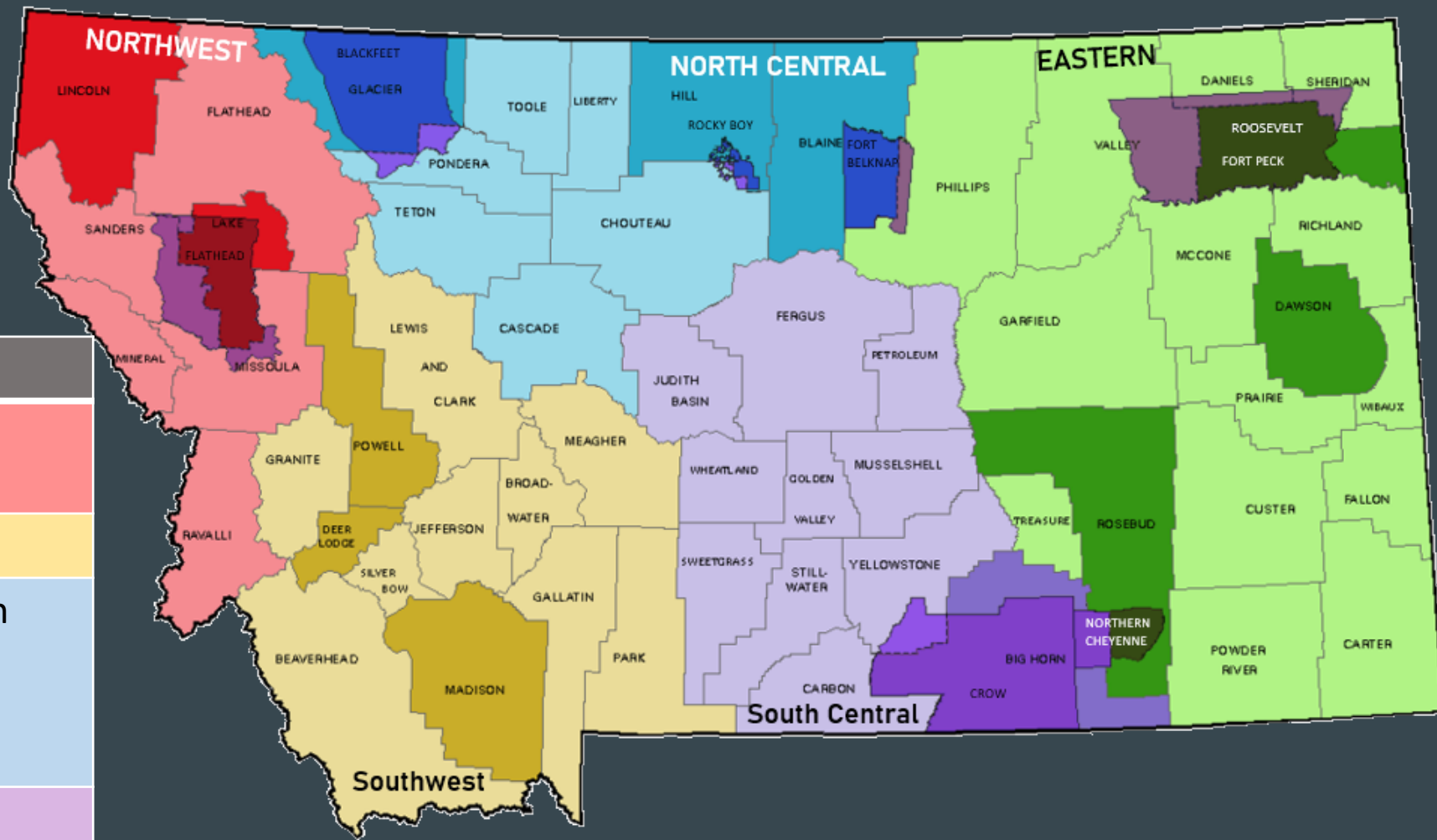
- **Goal 1: Prevent the onset and reduce the progression of substance abuse**
 - Reduce 30-day use of alcohol by youth
 - Reduce 30-day use of marijuana by youth
 - Reduce 30-day adult binge drinking
- **Goals 2: Strengthen comprehensive prevention approach**
 - Increase the percentage of evidence-based programs, policies and/or practices implemented in the community



Partnership for Success (PFS) Grant

- **Goal 1: Prevent the onset and reduce the progression of substance abuse in youth ages 9-20 for disproportionate populations (On Probation, In Foster Care, On Reservation)**
 - Reduce 30-day use of alcohol by youth
 - Reduce 30-day use of marijuana by youth
 - Reduce 30-day use of methamphetamine by youth
 - Decrease the number of youth at high risk (having 10 or more risk factors) for substance use
- **Goals 2: Strengthen comprehensive prevention approach**
 - Increase the percentage of evidence-based programs, policies and/or practices implemented in the community

Prevention Specialists



Region	Provider
Northwest Tribal	WMMHC CSKT
Southwest	Butte Cares
North Central Tribal Tribal Tribal	Alliance for Youth Blackfeet Fort Belknap Chippewa Cree
South Central	SCRMHC
Eastern	EMCHC

Northwest BG	Southwest BG	North Central BG	South Central BG	Eastern BG
Northwest PFS	Southwest PFS	North Central PFS	South Central PFS	Eastern PFS

A photograph of a brown horse standing in a field of dry grass and shrubs. In the background, there are snow-capped mountains under a clear blue sky. The image is slightly faded to allow text to be overlaid.

Current BHDD-Supported Tribal Prevention Efforts

- Confederated Salish & Kootenai (Tribal Health)
- Chippewa Cree (White Sky Hope)
- Fort Belknap (Tribal Health)
- Blackfeet Nation (Tribal Health)

Center for Substance Abuse Prevention (CSAP) Strategies

Dissemination of Information

- ParentingMontana.org
- Social media
- Health fairs/health promotion

Prevention Education

- Classroom and/or small group sessions (all ages);
- Parenting and family management classes
- PAX Good Behavior Game

Alternative Activities

- Drug free events
- Youth/adult leadership activities
- Community service activities

Community Based Process

- Coalition work
- Communities that Care
- Community Mobilization

Environmental

- Assisting communities to maximize local enforcement procedures governing availability and distribution of ATOD
- Promoting the establishment or review of alcohol, tobacco and drug use policies in schools
- Product pricing strategies

Problem Identification and Referral

- Employee assistance programs;
- Student assistance programs; and
- Driving while under the influence/driving while intoxicated education programs

Risk and Protective Factors

Risk Factors: increase the likelihood of an individual being involved in adverse behaviors. The following risk factors have been identified as a priority:

- Intention to Use
- Perception of Harm
- Parental Attitudes Favorable to Drug Use
- Pro-Social Involvement


Protective Factors: decrease the likelihood of an individual being involved in adverse behavior. The following protective factors positively associated with health and social outcomes for (AI/AN) youth include:

- Familial and non-familial connectedness
- Positive Pro-Social Involvement
- Positive Social Norms
- Cultural Connectedness

Prevention Specialists Certification

- Non-profit Board sets standards to meet national and local requirements
- Funded by Montana Healthcare Foundation
- Coordinated by University of Montana Public Health Training Center






Consultation Discussion


What Substance
Misuse Primary
Prevention Services are
you currently
delivering?





What challenges and/or
gaps are you experiencing
in providing these services?

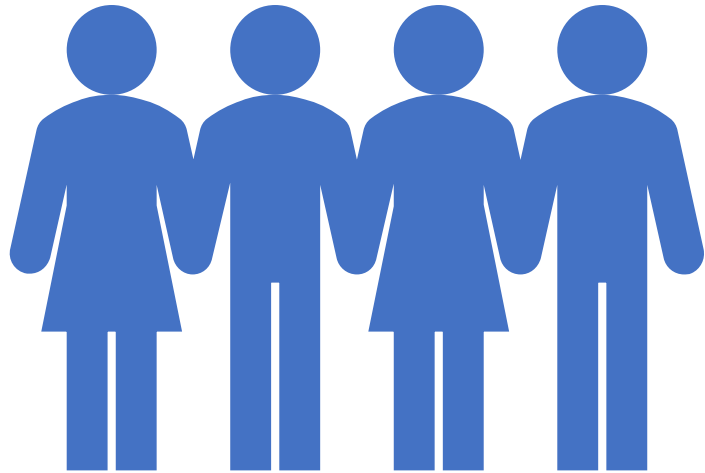
A large yellow triangle is positioned in the bottom right corner of the slide, pointing towards the top right.

What challenges/barriers have you experienced in accessing state prevention funds?



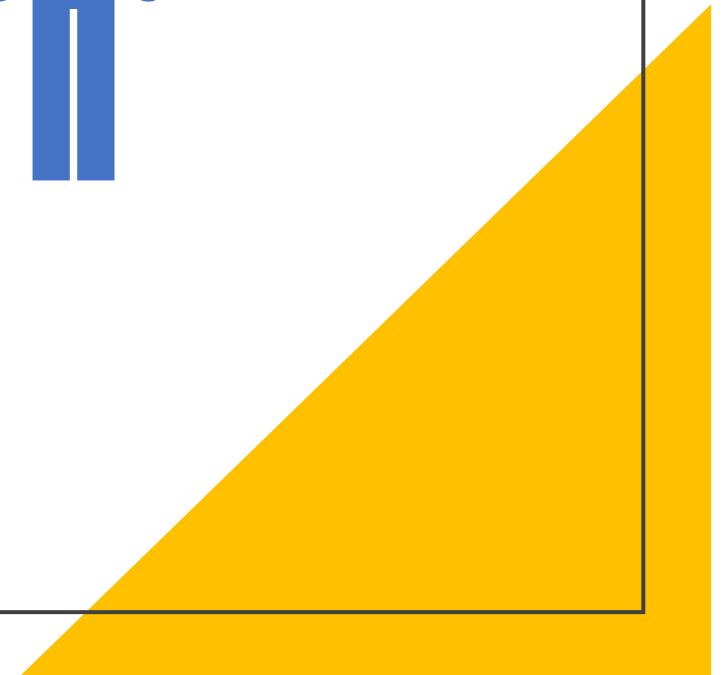
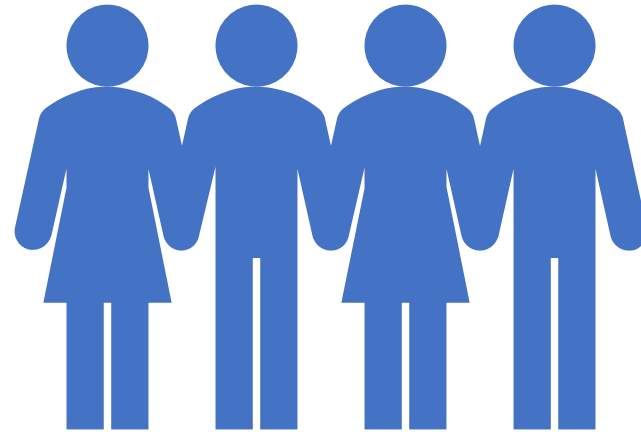
What other types of prevention work exist in tribal communities?





What will be necessary to support increasing professionalization of the primary prevention workforce?

What are the barriers and challenges associated with hiring, retention, and training for the existing workforce?



Thank you for your input!

Kimberly Koch, MPH

- **Prevention Section Supervisor**
- **MT DPHHS | BHDD Division**
- **Ph: 406.444.3749 | fax: 406.444.9389**
- Kimberly.koch@mt.gov

