



This report reflects confirmed tuberculosis cases reported to the Montana Department of Public Health and Human Services (DPHHS) in 2019. This report was prepared by the Tuberculosis Program. Contact Ryan Weight at 406-444-0273 or ryan.weight@mt.gov with questions.

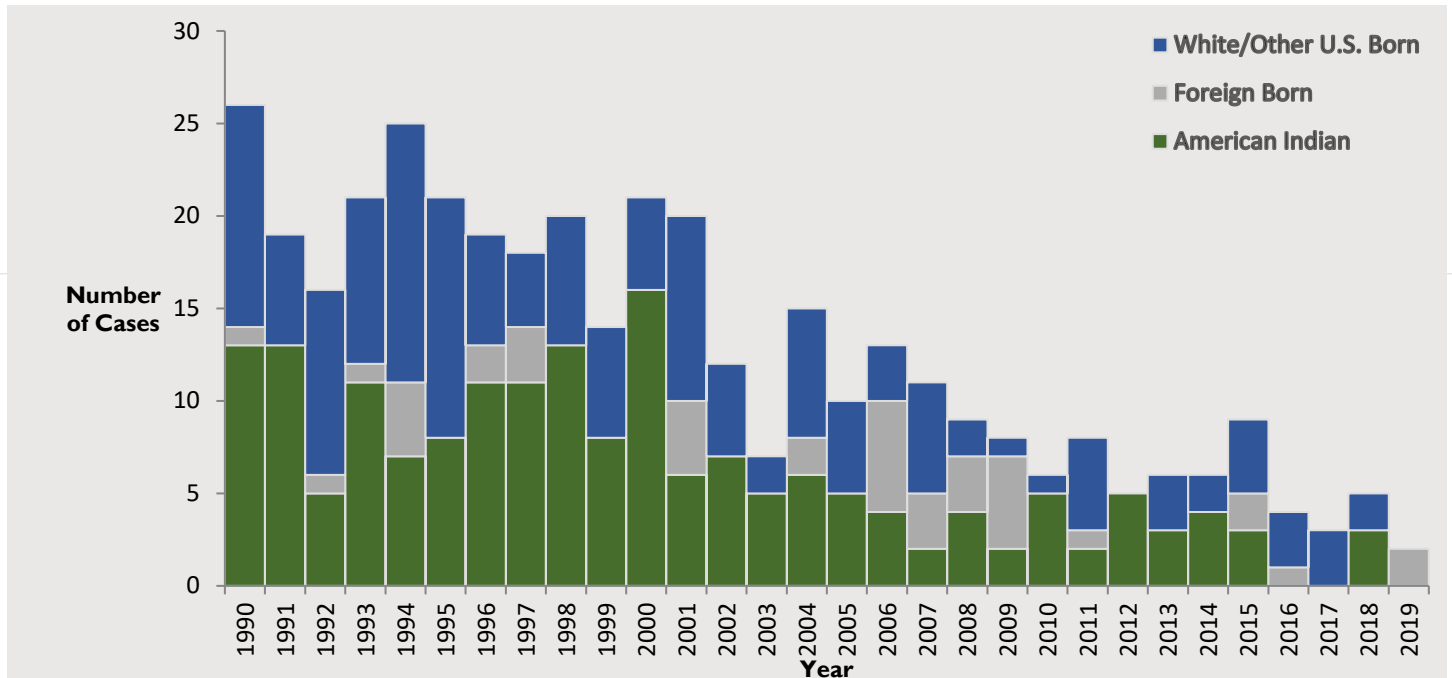
TB Surveillance Update (Table)

- Two patients with new, active tuberculosis were reported in Montana in 2019, the lowest ever recorded in Montana.
- Counties of residence for the TB cases included Blaine and Cascade.
- One patient had pulmonary/pleural disease; the other had extrapulmonary TB of the foot.
- Neither of the patients had drug-resistant TB
- Patient risk factors included: birth in TB endemic country, homelessness, and resident of correctional facilities.
- Both patients were foreign born.
- One patient was detained by Immigration and Customs Enforcement (ICE) and moved out of state to a detention facility prior to starting treatment. Treatment was started at the out-of-state detention facility.
- No contacts were found to be infected by the two cases.

TB Trends (Figures 1 and 2)

- Incidence rates of TB in Montana and the United States have been decreasing; the 2019 MT rate (0.2 cases per 100,000 population) was 14x lower than the 2018 U.S. rate (2.8 cases per 100,000 population; 2018 U.S. rate was unavailable at the time of this report)
- During the 1990s, an average of 10 cases per year, approximately 2.4 cases per 100,000 population, were reported in Montana (range: 26 cases in 1990 to 14 cases in 1999)
- During the past 10 years, an average of 5.4 cases per year, approximately 0.5 case per 100,000 population, were reported (range: 2 to 9 cases)
- During the most recent five-year period (2015–2019) an average of 4.6 cases per year, or ~0.4 cases per 100,000 population, were reported in Montana
- TB cases among American Indians have declined from an average of 10 cases per year in the 1990s to 5.7 cases per year in the 2000s to 2.5 cases per year in the 2010s.

FIGURE 1. REPORTED ACTIVE TUBERCULOSIS CASES BY RACE — MONTANA, 1990–2019



Data source: DPHHS Montana Infectious Disease Information System



FIGURE 2. TUBERCULOSIS INCIDENCE RATE — MONTANA AND UNITED STATES, 2005–2019

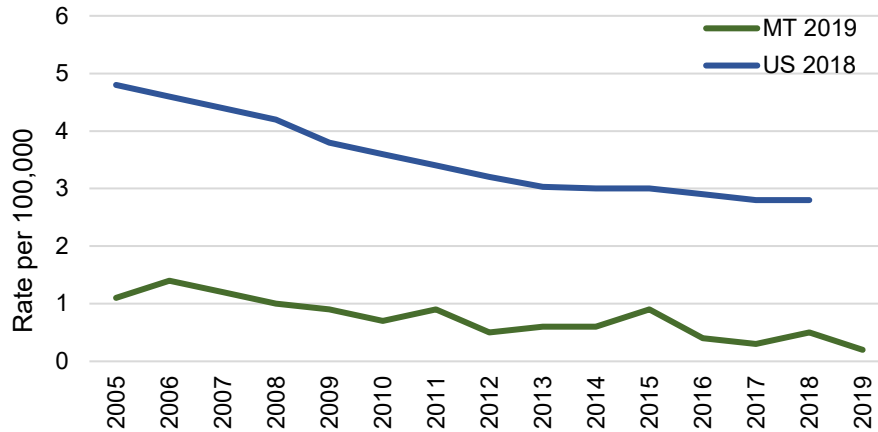


TABLE. TUBERCULOSIS CASE SUMMARY—MONTANA, 2017-2019

| Characteristics | 2017 | 2018 | 2019 |
|--------------------------------------|------|------|------|
| New TB Cases | 3 | 5 | 2 |
| Incidence Rates (per 100,000) | | | |
| Montana | 0.3 | 0.5 | 0.2 |
| Sex | | | |
| Male | 2 | 4 | 2 |
| Female | 1 | 1 | - |
| Age at diagnosis (years) | | | |
| <5 | - | - | - |
| 5-14 | - | - | - |
| 15-24 | - | 1 | - |
| 25-44 | - | 1 | 1 |
| 45-64 | 1 | 2 | 1 |
| ≥65 | 2 | 1 | - |
| Race, Ethnicity | | | |
| Non-Hispanic, White | 3 | 2 | 1 |
| Non-Hispanic, American Indian | - | 3 | - |
| Non-Hispanic, Other | - | - | - |
| Site of Disease | | | |
| Pulmonary/Pleural | 3 | 4 | 1 |
| Extrapulmonary only | - | 1 | 1 |
| Pulmonary & Extrapulmonary | - | - | - |
| Drug Resistance | | | |
| No resistance | 3 | 5* | 2 |
| Isoniazid resistance | - | - | - |
| Multiple-drug resistance | - | - | - |
| Country of Origin | | | |
| U.S. born | 3 | 5 | - |
| Foreign born | - | - | 2 |

*One or more patients met the definition of a clinical case but were culture-negative so susceptibility testing could not be completed
Data source: DPHHS Montana Infectious Disease Information System