



This report reflects confirmed tuberculosis cases reported to the Montana Department of Public Health and Human Services (DPHHS) in 2020. This report was prepared by the Tuberculosis Program. Contact Ryan Weight at 406-444-0273 or ryan.weight@mt.gov with questions.

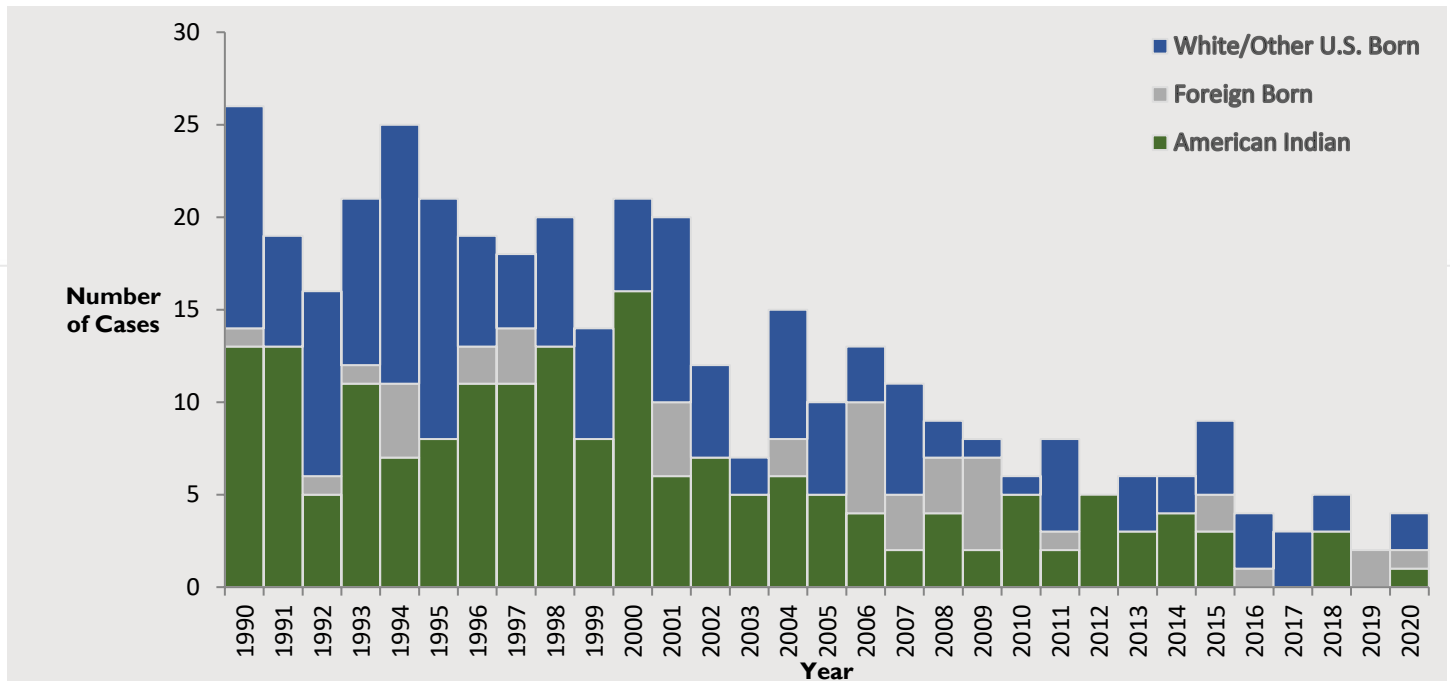
### TB Surveillance Update (Table)

- Four patients with new, active tuberculosis were reported in Montana in 2020.
- Counties of residence for the TB cases included **Silver Bow, Yellowstone, Rosebud and Missoula.**
- One patient had pulmonary/pleural disease, one had lymphatic TB, one had ovarian TB, and the fourth had *M. bovis* of the peritoneum.
- CDC does not distinguish between *M. tuberculosis* and *M. bovis* as both are infectious and cause almost identical disease in humans.
- One of the patients had an Isoniazid drug-resistant TB organism.
- Patient risk factors included: birth or travel in TB endemic countries and immunosuppression (not HIV/AIDS).
- One patient was foreign born.
- All the cases were found incidentally and very early in disease. None of them had typical signs and symptoms of active TB disease.
- No contacts were found to be infected by the four cases.

### TB Trends (Figures 1 and 2)

- Incidence rates of TB in Montana and the United States have been decreasing; the 2020 MT rate (0.4 cases per 100,000 population) was 5.5 times lower than the 2020 U.S. rate (2.2 cases per 100,000 population; 2020 U.S. rate may have been affected by the COVID-19 pandemic)
- During the past 10 years, an average of 5.2 cases per year, approximately 0.5 case per 100,000 population, were reported (range: 2 to 9 cases)
- During the most recent five-year period (2016–2020) an average of 3.6 cases per year, or ~0.3 cases per 100,000 population, were reported in Montana
- TB cases among American Indians have declined from an average of 10 cases per year in the 1990s to 5.7 cases per year in the 2000s to 2.5 cases per year in the 2010s.
- During the last 10 years (2011 – 2020) TB cases among American Indians has dropped to an average of 2.1 cases per year, and the last 5 years an average of 0.8 cases per year were reported in Montana.

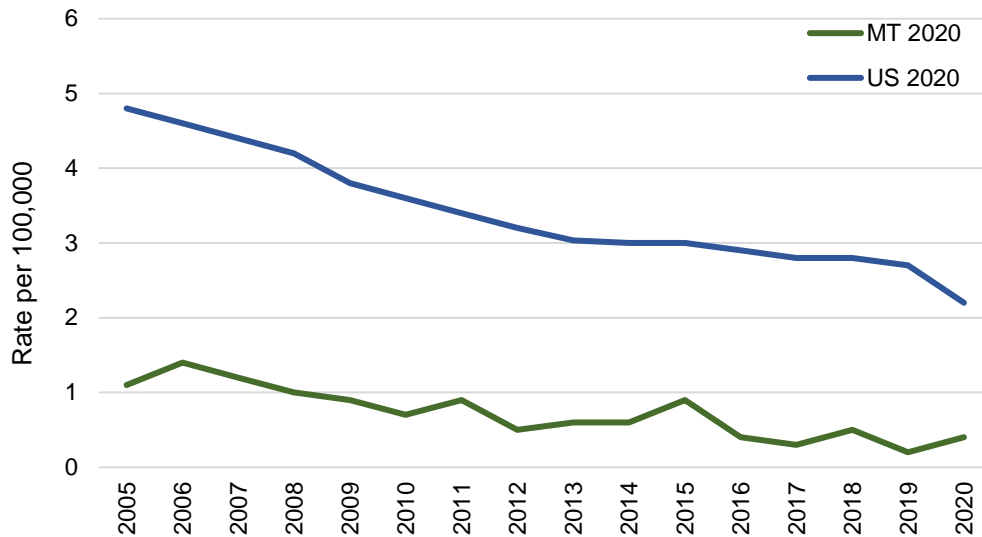
FIGURE 1. REPORTED ACTIVE TUBERCULOSIS CASES BY RACE — MONTANA, 1990–2020



Data source: DPHHS Montana Infectious Disease Information System



**FIGURE 2. TUBERCULOSIS INCIDENCE RATE — MONTANA AND UNITED STATES, 2005–2020**



**TABLE. TUBERCULOSIS CASE SUMMARY—MONTANA, 2018-2020**

Characteristics	2018	2019	2020
<b>New TB Cases</b>	5	2	4
<b>Incidence Rates (per 100,000)</b>			
Montana	0.5	0.2	0.4
<b>Sex</b>			
Male	4	2	-
Female	1	-	4
<b>Age at diagnosis (years)</b>			
<5	-	-	-
5-14	-	-	-
15-24	1	-	-
25-44	1	1	1
45-64	2	1	1
≥65	1	-	2
<b>Race, Ethnicity</b>			
Non-Hispanic, White	2	1	2
Non-Hispanic, American Indian	3	-	1
Non-Hispanic, Other	-	-	1
<b>Site of Disease</b>			
Pulmonary/Pleural	4	1	1
Extrapulmonary only	1	1	3
Pulmonary & Extrapulmonary	-	-	-
<b>Drug Resistance</b>			
No resistance	5*	2	3
Isoniazid resistance	-	-	1
Multiple-drug resistance	-	-	-
<b>Country of Origin</b>			
U.S. born	5	-	3
Foreign born	-	2	1

\*One or more patients met the definition of a clinical case but were culture-negative so susceptibility testing could not be completed

Data source: DPHHS Montana Infectious Disease Information System