

## TOTAL (BY PERCENT)

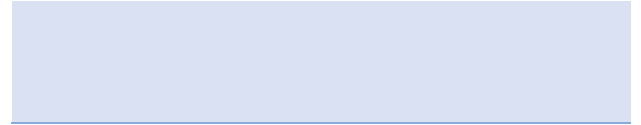
### BIRTH TO COLLECTION PERCENT (Goal 24-48 hours)



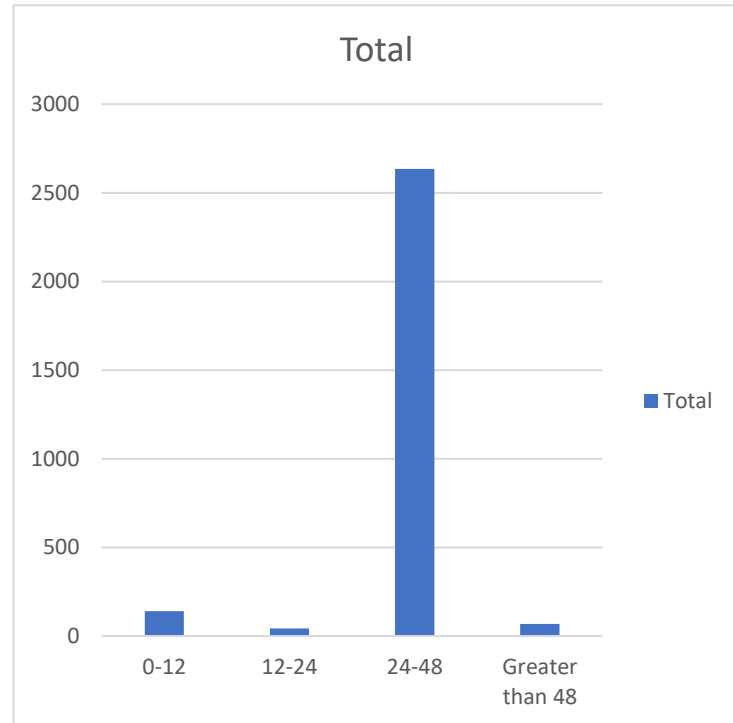
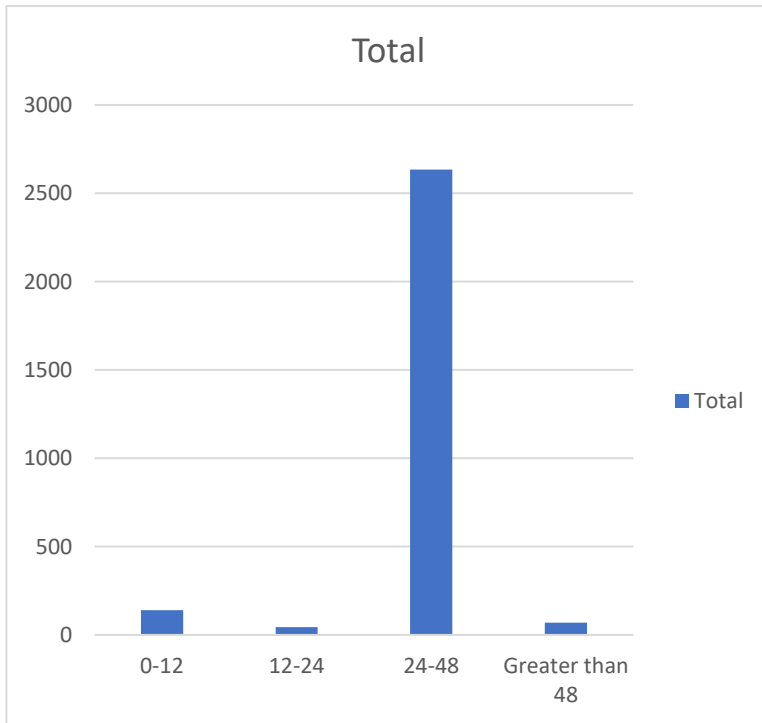
0-12	140
12-24	44
24-48	2635
Greater than 48	69

## TOTAL (BY NUMBER)

### BIRTH TO COLLECTION NUMBER (Goal 24-48 hours)



0-12	140
12-24	43
24-48	2635
Greater than 48	69

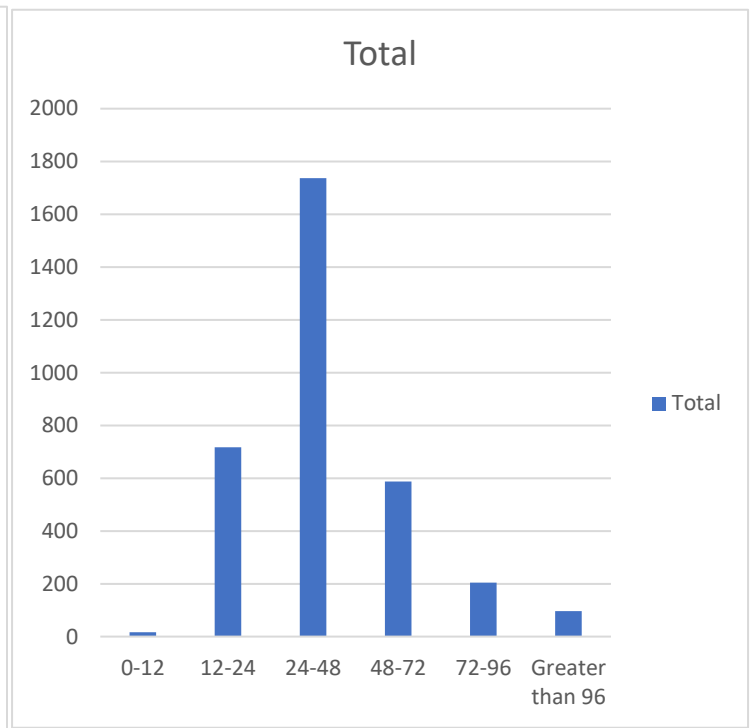
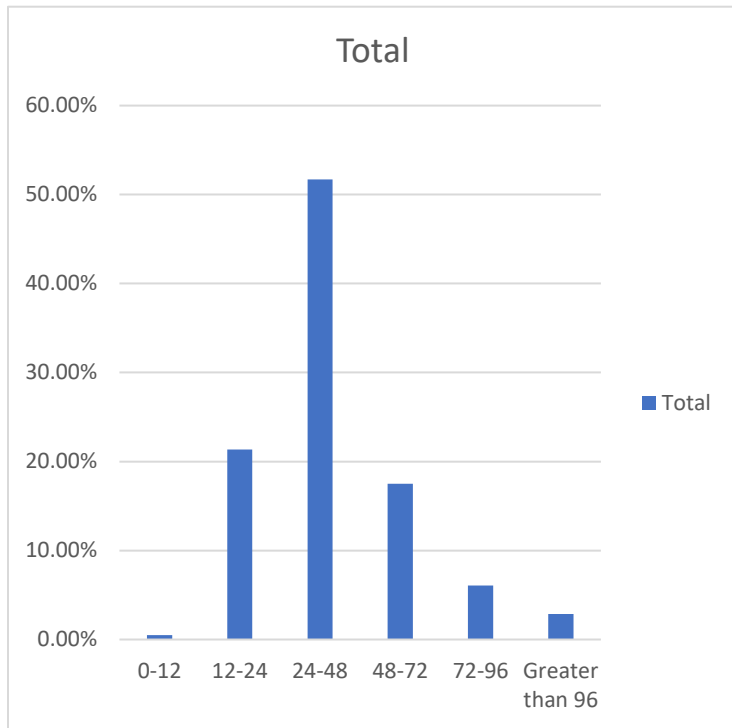


**COLLECTION TO RECEIPT PERCENT  
(Goal within three days)**

**COLLECTION TO RECEIPT NUMBER  
(Goal within three days)**

0-12	0.51%
12-24	21.37%
24-48	51.70%
48-72	17.50%
72-96	6.07%
Greater than 96	2.86%

0-12	17
12-24	717
24-48	1737
48-72	588
72-96	204
Greater than 96	96



**RECEIPT TO APPROVAL PERCENT**  
(Goal within five days)

0-12	2.50%
12-24	0.09%
24-48	33.52%
48-72	21.85%
72-96	26.76%
Greater than 96	15.27%

**RECEIPT TO APPROVAL NUMBER**  
(Goal within five days)

0-12	83
12-24	3
24-48	1126
48-72	734
72-96	899
Greater than 96	513

