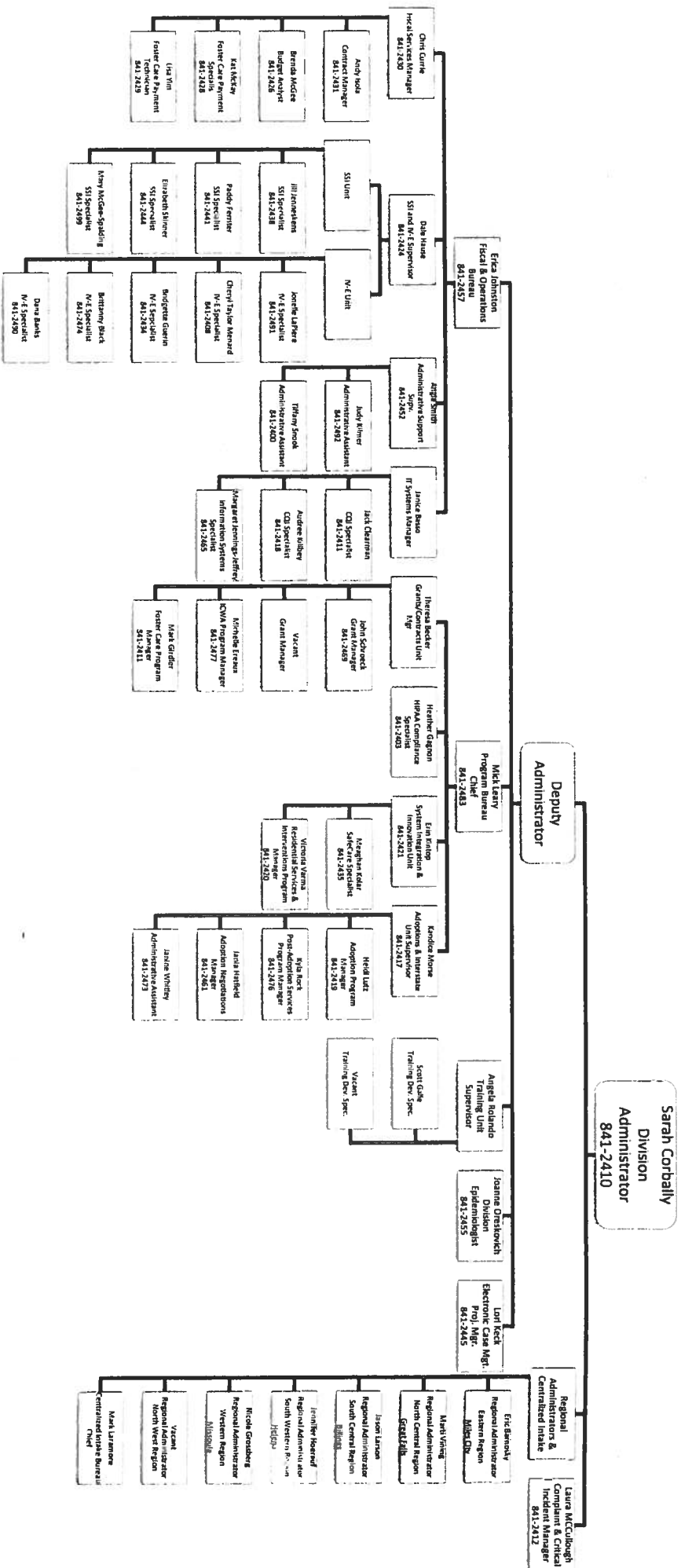


Child and Family Services Division  
Central Office Organizational Chart



Effective 2/16/16

## Child & Family Services Division

Number of Children Involved in Investigations

SFY 2008 - SFY 2015

Data Source: RDS 5341

Data Capture: July 10 following the end of each SFY

By: E. Johnston

Date: 02/16/2016

SFY	Unduplicated Number of Children Involved
2008	11,062
2010	11,240
2011	11,600
2012	11,835
2013	10,787
2014	11,046
2015	12,897



## TANF 002 – Child Supplemental Payment

<b>References:</b>	ARM 37.78.102, .206 and .207
<b>Overview:</b>	TANF Cash Child Supplemental Payment
<b>Policy:</b>	<p>Each TANF Cash eligible child may receive an additional monthly cash payment of \$50.00.</p> <p>Eligible children must reside in a household with:</p> <ol style="list-style-type: none"><li>1. Non-parent caretaker relatives whose needs are not included in the assistance unit, or</li><li>2. Custodial parents all receiving Supplemental Security Income (SSI) benefits.</li></ol> <p>The Child Supplemental Payment will be issued when a full month of TANF is received by a household with eligible child(ren).</p>
<b>Date Effective</b>	2/1/2016

**PAYMENT STANDARD TO BE USED**

(Based on 35% of FY 2015 Federal Poverty Level)

1	\$ 343
2	465
3	586
4	707
5	829
6	949
7	1,071
8	1,193
9	1,314
10	1,435
11	1,557
12	1,678
13	1,799
14	1,921
15	2,042
16	2,163
17	2,285
18	2,406
19	2,527
20	2,649

## Child & Family Services Division

Current Youth Place in Specialized and Therapeutic Family Foster Care

December, 2015

Data Source: RDS 7850 Financial App

By: E. Johnston

Date: 02/16/2016

Type of Placement	Number of Youth in Placement
Specialized Foster Care	37
Therapeutic Family Foster Care	100

## Child & Family Services Division

Number of SSI Eligible Youth

SFY 2011 - SFY 2015

Data Source: RDS 6826.1

Data Capture: As of June 30 each SFY

By: E. Johnston

Date: 02/16/2016

SFY	Number of SSI Eligible Youth*
2011	279
2012	235
2013	236
2014	238
2015	216

*\*Youth could also be simultaneously eligible for IV-E.*

## Child & Family Services Division

Youth Served by Chafee Education & Training Vouchers (ETVs)

SFY 2011 - SFY 2016

Data Source: Chafee Program

By: J. Schroeck

Date: 02/16/2016

SFY	Total ETVs Awarded
SFY 2011	32
SFY 2012	26
SFY 2013	33
SFY 2014	27
SFY 2015	31
SFY 2016	31

*\*Each school year is from July 1 to June 30.*