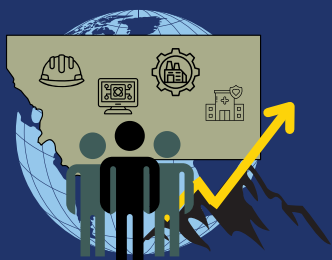


Information | Collaboration | Innovation



DISABILITY EMPLOYMENT SUMMIT 2026

Ensuring Montana's industry has the talent needed to thrive in the global economy.



May 13-14, 2026

1:00-5:00 p.m.; 8:30-5:00 p.m.

Montana Blue Cross/Blue Shield

3645 Alice Street, Helena, MT 59601



About the Summit

Join Montana employers, policymakers, educators, and community leaders for a two-day event designed to advance disability employment, strengthen workforce pipelines, and support a more innovative, competitive statewide economy.

Learn from national and Montana-based experts, hear powerful stories from workers and employers, and gain practical tools you can apply immediately within your organization.

Featured Speakers and Sessions

- **The Value Proposition of Disability Employment:** presented by The Harkin Institute; featuring Ashlea Lantz and Robert Ludke
- **Navigating Workplace Accommodations:** presented by Hannah Olson, CEO, Disclo
- **Fireside Chat with lunch provided:** presented by Steve Sukup, who offers an employer's perspective on building a resilient workforce, investing in people, and expanding pathways to competitive, integrated employment in rural and industrial communities.
- **Business Connections Reception** at the Downstairs at Helena Brew House May 13th 5:30-8:30 p.m.



Hannah Olson, CEO, Disclo



Steve Sukup, leader at
Sukup Manufacturing Co.

*SHRM credits pending

Registration: <https://forms.cloud.microsoft/g/EX3FusevWR>



AmericanJobCenter