

THE CDEpi SECTION

The mission of the Communicable Disease and Epidemiology Program (CDEpi) is to create, maintain, support, and strengthen routine surveillance and detection systems and epidemiological investigation processes, as well as to expand these systems and processes in response to incidents of public health significance.

Magdalena Scott

CDEpi Supervisor

Magdalena (Mag) provides oversight to program activities and manages grants, budgets, policy, and planning while ensuring compliance with state reporting statutes and rules. Mag works with state level collaborative partners to facilitate achievement of program goals and objectives.

Rachel Hinnenkamp

Lead Epi, Foodborne Epidemiologist



Rachel is CDEpi's lead epidemiologist. Rachel brings years of epi experience and guidance to the table to help assist in making public health decisions. In addition, Rachel is CDEpi's foodborne, waterborne, and outbreak epidemiologist. Rachel also generates our CDEpi weekly report for COVID-19!

Helen McCaffrey

Hepatitis C and HIV Epidemiologist



Helen works to identify new and existing HCV and HIV/AIDS cases and uses the data to identify trends in HIV occurrence to help guide prevention strategies. Helen also works closely with our state STD, HCV, and HIV Prevention section! Helen is also your contact for Hepatitis C and HIV cases, including how to manage cases in MIDIS.

Jessica Lopeman

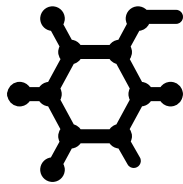
Nurse Consultant



Jessica works as a clinical consultant to reportable communicable diseases, and is the coordinator for local health department trainings. Jessica is the lead contact for human prion disease, toxic shock syndromes, rabies, vaccine preventable diseases, and more!

Ryan Weight

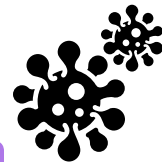
TB Epidemiologist



Ryan is interested in all communicable diseases, but is your expert for anything related to tuberculosis! He works with local health jurisdictions to report and manage TB cases, LTBI cases, and also manages the state TB Treatment program. Ryan is a great resource to turn to if you have confusing tuberculosis labs in your MIDIS queue!

Samantha Saycich

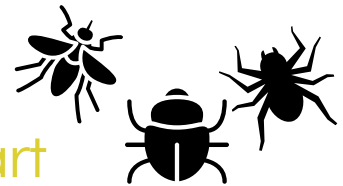
COVID-19 Epidemiologist



Sam's valuable epidemiology skills have been pulled in to work specifically on the COVID-19 response and data analysis. Sam looks at all data related to COVID-19 to help inform public health decisions. Sam generates select COVID-related reports, such as the EPI profile and COVID hospitalization reports. Sam is also the SME that manages Brucellosis, Hantavirus, and Q-Fever!

Devon Cozart

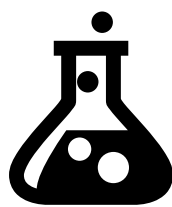
Flu and Vectorborne Epidemiologist



When Devon isn't spending the summer monitoring vectorborne diseases like malaria, Colorado Tick Fever, and Lyme, she's spending the winter monitoring influenza cases in Montana! She's your go-to epidemiologist for questions about influenza and vectorborne diseases.

Beth Hopkins

COVID-19 Testing Coordinator



Beth is our COVID-19 testing coordinator! She helps coordinate select COVID-19 testing efforts across the state. When Beth isn't helping manage testing efforts across the state or training facilities, she's helping the MTPHL sort and process the (sometimes) over 1,000 specimens that come to MTPHL for COVID-19 testing a day! Beth also works with state correctional facilities across Montana during COVID-19 outbreaks.

Lydia Bloom

Administrative Assistant



Lydia works as one of our MIDIS help desk staff, and works diligently to enter laboratory results into MIDIS and eHARs. Lydia helps direct calls to the proper CDEpi staff member and performs the monthly 24/7 test calls to counties to fulfill the Public Health Emergency Preparedness grant requirement!

Meagan Gillespie

State Contact Tracer



Meagan is our state contact tracer for CDEpi! Can't locate a case of COVID? Need contact information related to a case? Trying to find a better way to contact trace your communicable diseases? Meagan can help you! Meagan also facilitates in notifying other states of communicable diseases in travelers to Montana and helps reroute laboratory test results and cases to the correct jurisdiction that they need to get to.



MONTANA
COMMUNICABLE
DISEASE EPIDEMIOLOGY

THE CDEpi SECTION

The mission of the Communicable Disease and Epidemiology Program (CDEpi) is to create, maintain, support, and strengthen routine surveillance and detection systems and epidemiological investigation processes, as well as to expand these systems and processes in response to incidents of public health significance.

Magdalena Scott

CDEpi Supervisor

Magdalena.Scott@mt.gov
406-444-3049

Rachel Hinnenkamp

Lead Epi, Foodborne Epi



Rachel.Hinnenkamp@mt.gov
406-444-0649

Jessica Lopeman

Nurse Consultant



Jessica.Lopeman@mt.gov
406-444-3165

Helen McCaffrey

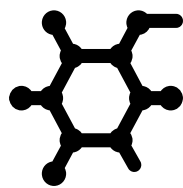
Hepatitis and HIV Epidemiologist



HMcCaffrey@mt.gov
406-444-4735

Ryan Weight

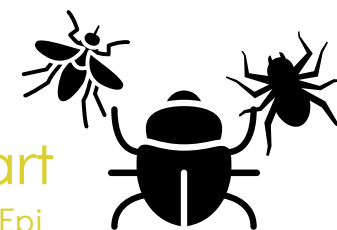
TB Epidemiologist



Ryan.Weight@mt.gov
406-444-0274

Devon Cozart

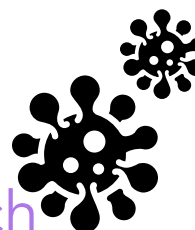
Flu and Vectorborne Epi



Devon.Cozart@mt.gov
406-444-4560

Samantha Saycich

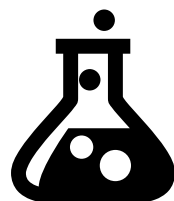
COVID-19 Epidemiologist



samantha.saycich@mt.gov
406-444-0018

Beth Hopkins

COVID-19 Testing Coordinator



Beth.Hopkins@mt.gov
406-444-3012

Meagan Gillespie

State Contact Tracer



Meagan.Gillespie@mt.gov
406-444-5563

Lydia Bloom

Administrative Assistant



lbloom@mt.gov
406-444-0273



MONTANA
**COMMUNICABLE
DISEASE EPIDEMIOLOGY**

The Montana Department of Public Health and Human Services presents:

SURVEILLANCE AND INFORMATICS SECTION

The mission of the Surveillance and Informatics Section is to maintain, modernize, and strengthen public health surveillance so that data are used to improve the health of Montanans. This section includes MIDIS, Syndromic Surveillance, Behavioral Risk Factor Surveillance System (BRFSS), Hospital Discharge System, and our Vital Statistics System!

M'liss Weisner

Syndromic Surveillance Epidemiologist

M'liss Weisner is our syndromic surveillance epidemiologist for the state. Syndromic surveillance can be used for early communicable disease outbreak detection. M'liss provides valuable data to this team and is exceptionally well versed in utilizing data programming systems to analyze data!



Lydia Bloom

Administrative Assistant

Lydia works as one of our MIDIS help desk staff, and works diligently to enter laboratory results into MIDIS and eHARs. Lydia helps direct calls to the proper CDEpi staff member and performs the monthly 24/7 test calls to counties to fulfill the Public Health Emergency Preparedness grant requirement!



Danny Power

ELR Epidemiologist

Danny is our electronic laboratory reporting (ELR) epidemiologist. He helps ensure that laboratory reports get into MIDIS correctly and quickly and helps troubleshoot any issues that might delay the reporting of communicable conditions. He's your go-to if you have any questions about labs reporting to MIDIS or if you notice labs from a facility are not getting into MIDIS! Danny also manages the quarterly PHEP reconciliation.



BRFSS



Hospital Discharge System



MIDIS



Syndromic Surveillance



Vital Statistics System

406-444-0273 (p & 24/7) | 1-800-616-7460 (f)

The Montana Department of Public Health and Human Services presents:
**SURVEILLANCE AND INFORMATICS
SECTION**

The mission of the Surveillance and Informatics Section is to maintain, modernize, and strengthen routine state surveillance systems to assist in communicable, chronic, and behavioral disease investigations across Montana. This section includes MIDIS, Syndromic Surveillance, Behavioral Risk Factor Surveillance System (BRFSS), Hospital Discharge System, and our Vital Statistics System!

M'liss Weisner

Syndromic Surveillance Epidemiologist



Mliss.Weisner@mt.gov
406-444-0921

Danny Power

ELR Epidemiologist



Danny.Power@mt.gov
406-329-5434

Lydia Bloom

Administrative Assistant



lbloom@mt.gov
406-444-0273



BRFSS



Hospital Discharge
System



MIDIS



Syndromic
Surveillance



Vital Statistics
System

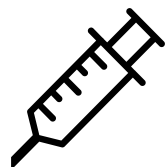
406-444-0273 (p & 24/7) | 1-800-616-7460 (f)

ICP/HAI SECTION

The mission of the Infection Control and Prevention (ICP) and Healthcare Associated Infection (HAI) section is to investigate, mitigate, and strengthen communicable disease surveillance in healthcare settings and provide tools to prevent and control the spread of communicable diseases in Montana's most vulnerable settings.

Samantha Carle

Infection Prevention Specialist



Samantha is an infection prevention specialist for CDEpi. Samantha performs infection control assessments in a variety of healthcare settings in Montana. Additionally, Samantha provides infection control resources and education to healthcare facilities.

Erika Baldry

ICP/HAI Section Supervisor



Erika manages the ICP and HAI program in Montana. She LOVES talking about infection prevention with local public health and healthcare facilities, and assists with performing infection control and assessment reviews (ICARs). She's also your go-to for antibiotic resistant organisms in Montana!

Elizabeth Adams

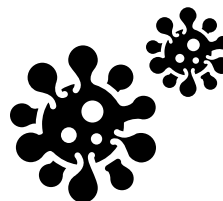
Infection Prevention Specialist



Elizabeth (Liz) is an infection prevention specialist for CDEpi. Liz performs infection control assessments in a variety of healthcare settings in Montana. Additionally, Liz provides infection control resources and education to healthcare facilities.

Dianna Bowling

Infection Prevention Specialist



Dianna is an infection prevention specialist for CDEpi. Dianna performs infection control assessments in a variety of healthcare settings in Montana. Additionally, Dianna provides infection control resources and education to healthcare facilities.

Lydia Bloom

Administrative Assistant



Lydia works as one of our MIDIS help desk staff, and works diligently to enter laboratory results into MIDIS and eHARs. Lydia helps direct calls to the proper CDEpi staff member and performs the monthly 24/7 test calls to counties to fulfill the Public Health Emergency Preparedness grant requirement!

406-444-0273 (p & 24/7) | 1-800-616-7460 (f)

ICP/HAI SECTION

The mission of the Infection Control and Prevention (ICP) and Healthcare Associated Infection (HAI) section is to investigate, mitigate, and strengthen communicable disease surveillance in healthcare settings and provide tools to prevent and control the spread of communicable diseases in Montana's most vulnerable settings.

Erika Baldry

ICP/HAI Section Supervisor

Erika.Baldry@mt.gov
406-444-0275



Samantha Carle

Infection Prevention Specialist

Samantha.Carle@mt.gov
406-417-8249



Elizabeth Adams

Infection Prevention Specialist

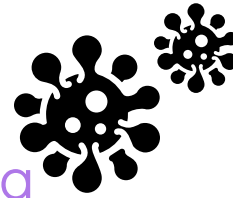
eadams2@mt.gov
406-417-8119



Dianna Bowling

Infection Prevention Specialist

Dianna.Bowling@mt.gov
406-444-5520



Lydia Bloom

Administrative Assistant

lbloom@mt.gov
406-444-0273



406-444-0273 (p & 24/7) | 1-800-616-7460 (f)