

## Weekly COVID-19 Update in Montana (as of 6/4/2021)

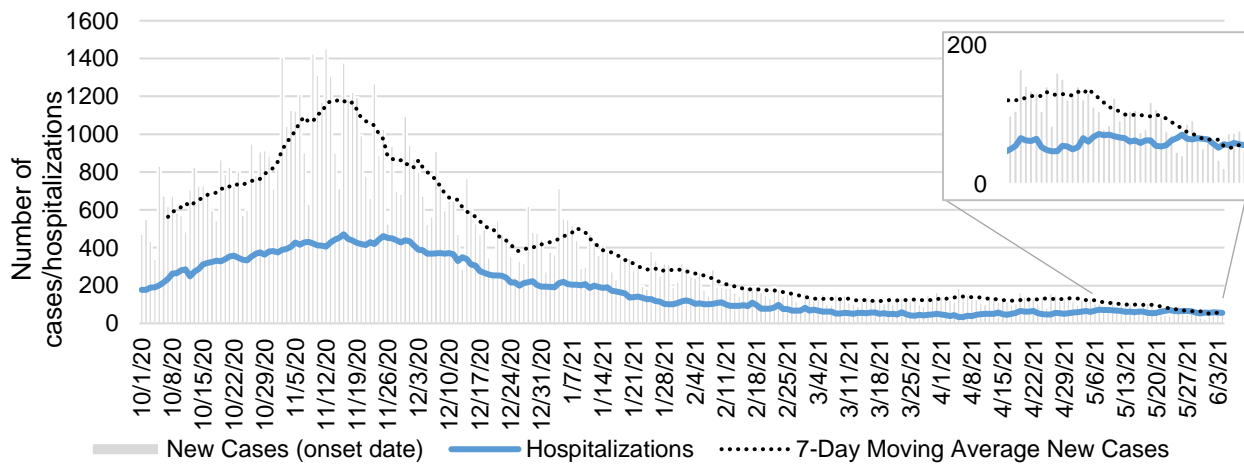
This report is a weekly snapshot of COVID-19 activity in Montana. Data is analyzed based on information available as of June 4, 2021. Data is provisional and expected to change as more information is received.

### Case Data

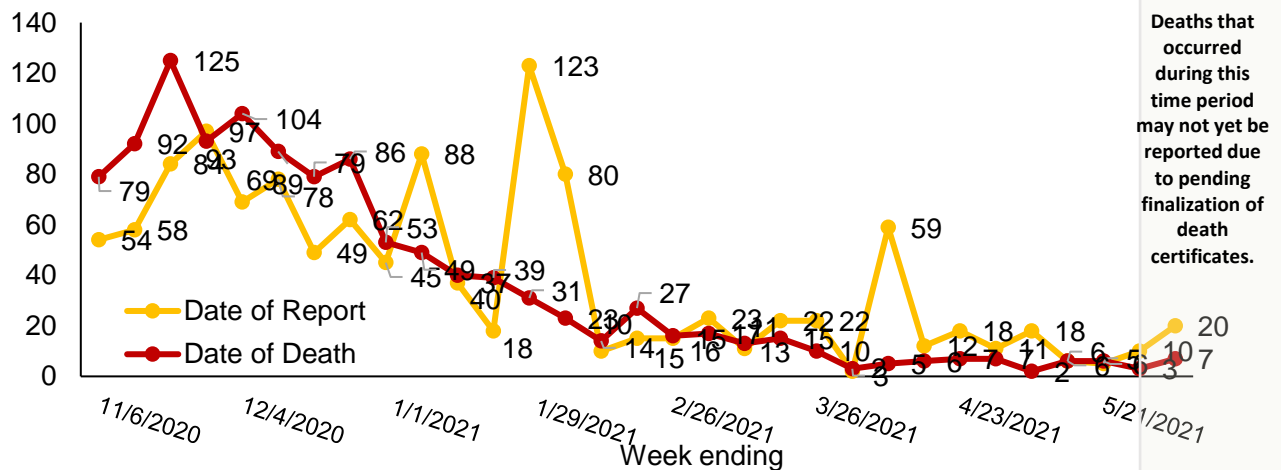
**Table 1. Summary of COVID-19 Activity – Montana, as of 6/4/2021**

	TOTAL	RECENT WEEK	PERCENT CHANGE FROM PREVIOUS WEEK
REPORTED CASES	112,357	583	-10%
LABORATORY TESTS	1,397,296	18,011	-17%
HOSPITALIZATIONS	5,338	56	-15%
DEATHS	1,633	7	+130%

**Figure 1. COVID-19 Cases and Hospitalizations over Time - Montana, as of 6/4/2021**



**Figure 2. COVID-19 Deaths by Report Date and Date of Death – Montana, 11/1/2020 – 6/4/2021**



## Vaccine Data – updated through 6/4/2021

Montana began vaccinating individuals in mid-December 2020 with a phased process: Phase 1A on December 14, 2020, Phase 1B on January 19, 2021, and Phase 1B+ on March 8, 2021. Vaccinations were opened to all Montanans age 16+ on April 1, 2021 and expanded to all Montanans age 12+ on May 10<sup>th</sup>, 2021. To date 822,900 doses have been given across the state and 44% of the eligible population are considered fully vaccinated.

### COVID-19 Vaccine Doses Administered – Montana, as of 6/4/2021

	NUMBER	PERCENT OF ELIGIBLE POPULATION	THIS WEEK	PERCENT CHANGE FROM PREVIOUS WEEK
TOTAL DOSES ADMINISTERED	822,900		11,620	-34%
DOSE 1 ADMINISTERED	454,206	49%	5,053	-40%
FULLY VACCINATED INDIVIDUALS	400,280	44%	7,719	-23%

Figure 3. COVID-19 Vaccine Doses Administered by Week – Montana, as of 6/4/2021

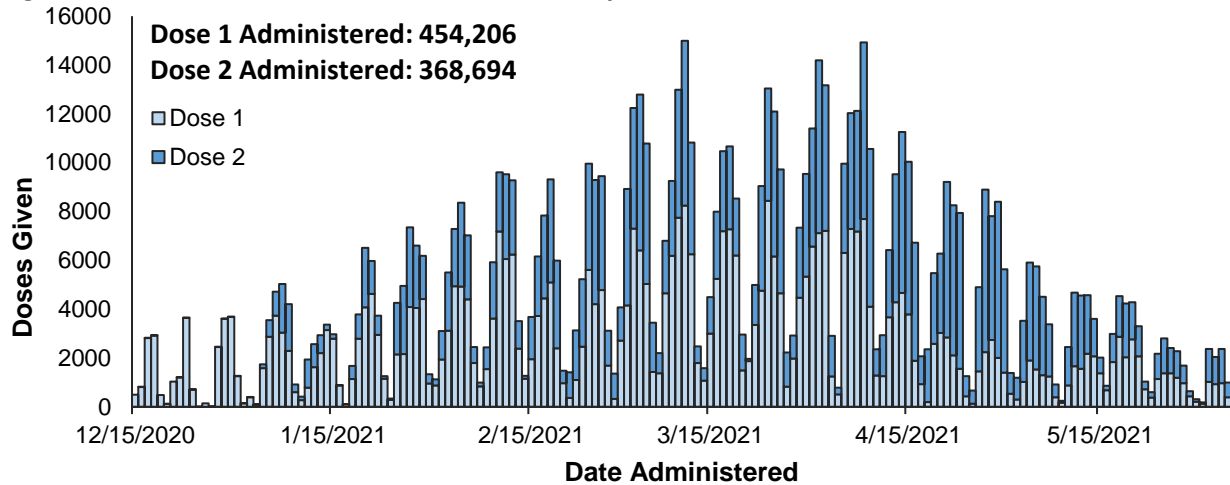
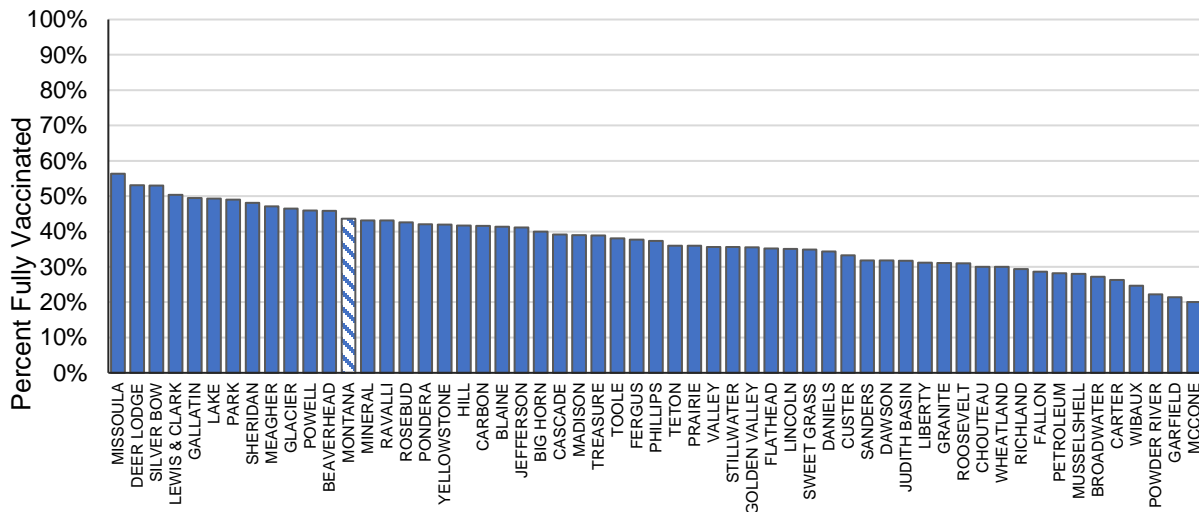


Figure 4. Percent of Eligible Montanans (12+ years) Fully Vaccinated by County – Montana, 6/4/2021



### Variant and Breakthrough Cases

A variant has one or more mutations that differentiate it from other viral strains in circulation. Multiple variants of SARS-COV-2 have been documented throughout this pandemic. To date, 260 variants of concern have been identified in Montana. The most common variant identified (52% of specimens) is B.1.1.7 (UK strain).

A breakthrough COVID-19 infection is defined as a positive SARS-CoV-2 collected  $\geq 14$  days after completing the primary COVID-19 vaccine series of an FDA-authorized COVID-19 vaccine. Depending on the specific vaccine administered, completion of series could be one or two doses of vaccine. As of 6/4/2021, 198 cases of confirmed breakthrough disease were reported, including 22 hospitalizations and two deaths.