

Weekly COVID-19 Update in Montana (as of 7/2/2021)

This report is a weekly snapshot of COVID-19 activity in Montana. Data is analyzed based on information available as of July 2, 2021. Data is provisional and expected to change as more information is received.

Case Data

Table 1. Summary of COVID-19 Activity – Montana, as of 7/2/2021

	TOTAL	RECENT WEEK	PERCENT CHANGE FROM PREVIOUS WEEK
REPORTED CASES	113,937	367	+2%
LABORATORY TESTS	1,451,212	14,014	+27%
HOSPITALIZATIONS	5,525	52	+0%
DEATHS	1,668	5	+17%

Figure 1. COVID-19 Cases and Hospitalizations over Time - Montana, as of 7/2/2021

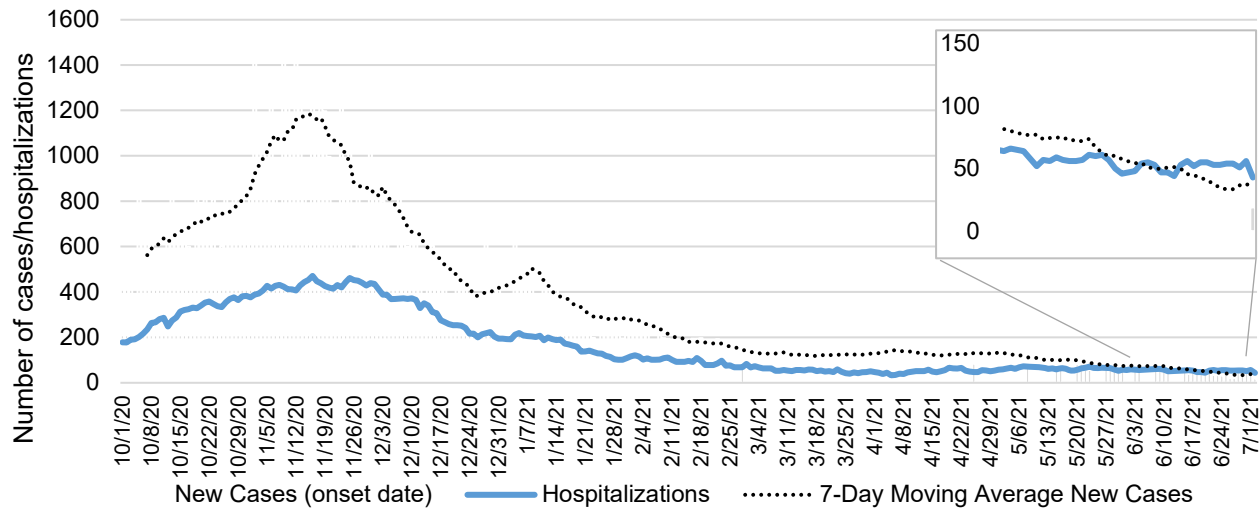
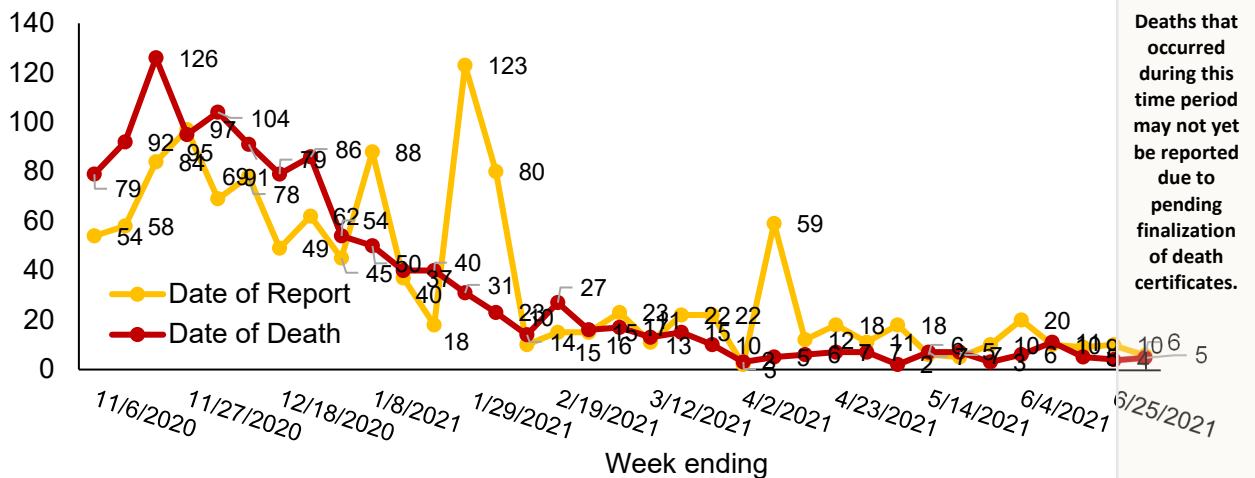


Figure 2. COVID-19 Deaths by Report Date and Date of Death – Montana, 11/1/2020 – 7/2/2021



Vaccine Data – updated through 7/2/2021

Montana began vaccinating individuals in mid-December 2020 with a phased process: Phase 1A on December 14, 2020, Phase 1B on January 19, 2021, and Phase 1B+ on March 8, 2021. Vaccinations were opened to all Montanans age 16+ on April 1, 2021 and expanded to all Montanans age 12+ on May 10th, 2021. To date 867,218 doses have been given across the state and 47% of the eligible population are considered fully vaccinated.

Table 2: COVID-19 Vaccine Doses Administered – Montana, as of 7/2/2021

	NUMBER	PERCENT OF ELIGIBLE POPULATION	THIS WEEK	PERCENT CHANGE FROM PREVIOUS WEEK
TOTAL DOSES ADMINISTERED	867,218		4,663	-49%
DOSE 1 ADMINISTERED	472,998	52%	2,262	-28%
FULLY VACCINATED INDIVIDUALS	429,696	47%	3,113	-18%

Figure 3. COVID-19 Vaccine Doses Administered by Week – Montana, as of 7/2/2021

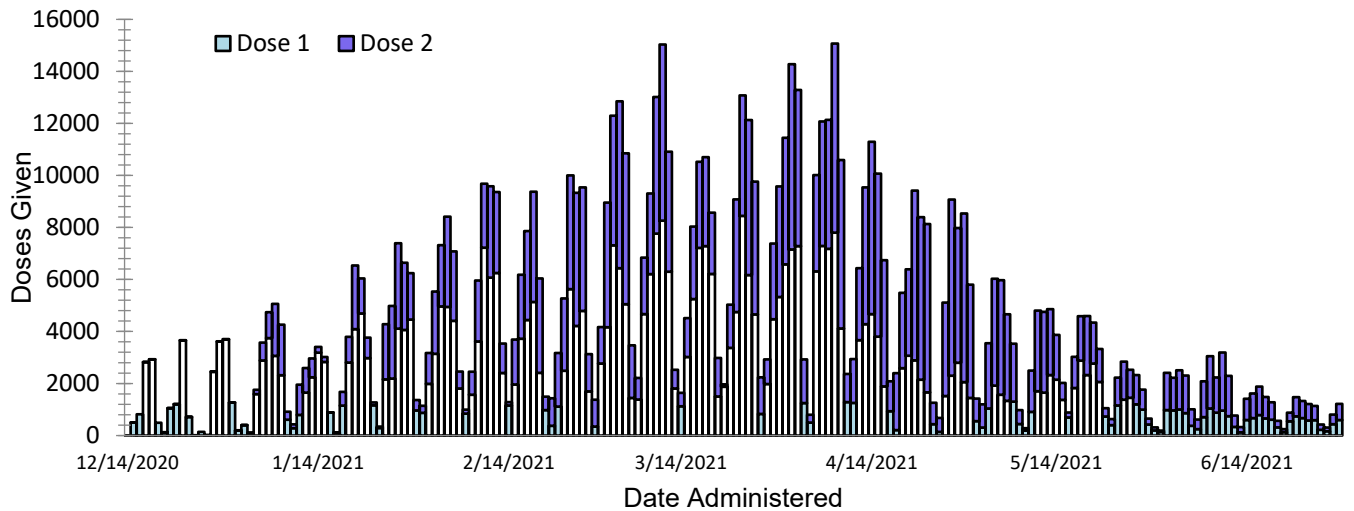
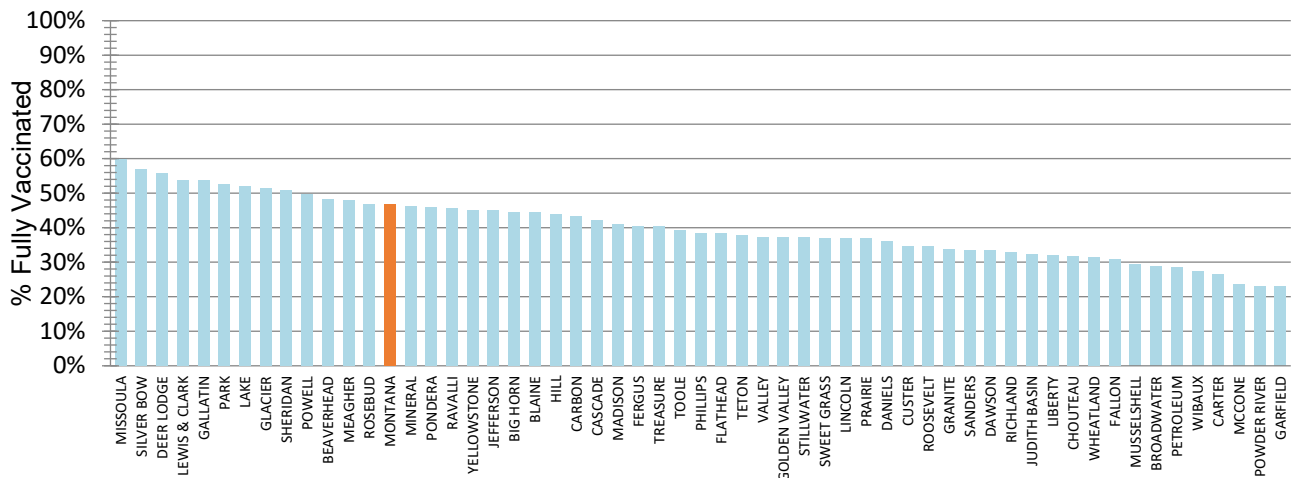


Figure 4. Percent of Eligible Montanans (12+ years) Fully Vaccinated by County – Montana, 7/2/2021



Variant and Breakthrough Cases

A variant has one or more mutations that differentiate it from other viral strains in circulation. Multiple variants of SARS-COV-2 have been documented throughout this pandemic. To date, 646 variants of concern have been identified in 43 counties in Montana. The most common variant identified (71% of specimens) is B.1.1.7 (UK strain).

A breakthrough COVID-19 infection is defined as a positive SARS-CoV-2 collected ≥ 14 days after completing the primary COVID-19 vaccine series of an FDA-authorized COVID-19 vaccine. Depending on the specific vaccine administered, completion of series could be one or two doses of vaccine. As of 7/2/2021, 383 cases of confirmed breakthrough disease were reported, including 38 hospitalizations and seven deaths.

Hospitalizations and Deaths and Vaccination Status

COVID-19 related hospitalization and death data from **April 25 – July 2** were analyzed to review vaccination status. Ninety-five percent of Montanans who were hospitalized and 92% of those who had died had not received a COVID-19 vaccine (Table 3). Of those tested, less than five percent of hospitalizations or deaths were identified as a variant of concern.

Table 3. Vaccination status of reported COVID-19 hospitalizations and deaths - April 25 - July 2, 2021

	HOSPITALIZATIONS	DEATHS
TOTAL REPORTED	501	50
MEDIAN AGE (YEARS)	62	72.5
AGE RANGE (YEARS)	0-96	23-94
UNVACCINATED	476 (95%)	46 (92%)
VACCINATED (BREAKTHROUGH CASE)	25 (5%)	4 (8%)
VARIANTS OF CONCERN OR INTEREST AND NUMBER OF TYPES RELATED TO HOSPITALIZATIONS AND DEATHS	30 (6.0%) 3 variant types	3 (6%) 2 variant types

Reported COVID-19 Cases by County with Trendline – Montana, past 6 weeks

County	28 May	4 Jun	11 Jun	18 Jun	25 Jun	2 Jul	change from previous week*	Trendline
Beaverhead	1	0	10	2	3	2	-1	
Big Horn	1	11	2	0	6	4	-2	
Blaine	8	9	5	2	1	12	11	
Broadwater	9	4	1	9	2	4	2	
Carbon	9	4	6	5	6	8	2	
Carter	3	0	0	0	0	0	0	
Cascade	86	68	53	67	54	57	3	
Chouteau	2	4	2	0	0	0	0	
Custer	3	10	1	0	1	1	0	
Daniels	0	0	0	0	0	0	0	
Dawson	2	0	3	0	1	7	6	
Deer Lodge	1	3	0	2	2	3	1	
Fallon	1	1	1	0	1	2	1	
Fergus	0	1	5	0	5	1	-4	
Flathead	67	95	75	61	37	58	21	
Gallatin	63	63	26	11	14	10	-4	
Garfield	0	0	0	0	0	0	0	
Glacier	0	2	3	0	1	0	-1	
Golden Valley	1	0	0	0	0	0	0	
Granite	5	1	3	0	0	0	0	
Hill	5	19	9	2	4	7	3	
Jefferson	6	4	9	3	1	3	2	
Judith Basin	0	0	0	1	0	0	0	
Lake	14	9	5	3	6	3	-3	
Lewis and Clark	36	22	23	21	24	14	-10	
Liberty	0	0	2	0	0	0	0	
Lincoln	5	1	2	8	8	4	-4	
Madison	2	2	2	4	2	0	-2	
McCone	0	0	0	0	0	0	0	

County	28 May	4 Jun	11 Jun	18 Jun	25 Jun	2 Jul	change from previous week*	Trendline
Meagher	0	1	0	0	0	0	0	
Mineral	7	2	14	10	5	0	-5	
Missoula	53	43	53	33	28	29	1	
Musselshell	10	6	5	1	6	3	-3	
Park	22	15	12	3	5	4	-1	
Petroleum	0	0	0	0	0	0	0	
Phillips	0	0	0	0	1	2	1	
Pondera	7	3	4	0	2	0	-2	
Powder River	2	0	0	1	4	5	1	
Powell	1	0	6	0	1	6	5	
Prairie	0	0	0	0	0	0	0	
Ravalli	46	38	29	15	9	12	3	
Richland	2	0	3	0	1	0	-1	
Roosevelt	18	6	3	2	1	0	-1	
Rosebud	3	0	1	2	0	1	1	
Sanders	9	7	7	12	1	4	3	
Sheridan	1	0	0	0	0	0	0	
Silver Bow	11	8	2	14	14	6	-8	
Stillwater	3	13	3	2	4	2	-2	
Sweet Grass	2	1	0	0	0	1	1	
Teton	2	4	0	0	0	1	1	
Toole	0	1	0	2	2	2	0	
Treasure	0	0	0	0	0	0	0	
Valley	5	1	0	0	0	0	0	
Wheatland	0	0	0	1	1	1	0	
Wibaux	0	0	0	0	0	0	0	
Yellowstone	111	98	78	101	96	88	-8	
MONTANA	645	580	468	400	360	367	7	

*Note: Data are based on the date of report into the Montana Infectious Disease Information System (MIDIS). Underlined numbers in the above table reflect adjusted counts and may include cases diagnosed but not reported in earlier time frames. These adjustments result from local and state data reconciliation efforts, conducted to ensure accurate data.

County name	Eligible			Fully Immunized	Total Doses Administered	Percent eligible with first dose (12+)	Percent Fully Vaccinated (12+)
	population 12+	Dose 1	Dose 2				
BEAVERHEAD	8,412	4,227	3,516	4,055	7,743	50%	48%
BIG HORN	10,303	5,061	4,379	4,592	9,440	49%	45%
BLAINE	5,359	2,636	2,243	2,379	4,879	49%	44%
BROADWATER	5,443	1,857	1,353	1,562	3,210	34%	29%
CARBON	9,621	4,368	3,965	4,175	8,333	45%	43%
CARTER	1,051	297	266	279	563	28%	27%
CASCADE	68,949	31,815	26,337	29,105	58,152	46%	42%
CHOUTEAU	4,903	1,745	1,410	1,550	3,155	36%	32%
CUSTER	9,855	3,645	3,045	3,422	6,690	37%	35%
DANIELS	1,454	547	489	525	1,036	38%	36%
DAWSON	7,410	2,597	2,291	2,478	4,888	35%	33%
DEER LODGE	8,375	4,962	4,162	4,661	9,124	59%	56%
FALLON	2,330	783	692	716	1,476	34%	31%
FERGUS	9,561	4,146	3,600	3,865	7,746	43%	40%
FLATHEAD	88,987	38,108	31,210	34,177	69,319	43%	38%
GALLATIN	99,225	62,307	48,807	53,190	111,114	63%	54%
GARFIELD	1,066	254	217	246	471	24%	23%
GLACIER	10,794	7,971	5,137	5,536	13,108	74%	51%
GOLDEN VALLEY	703	269	238	262	507	38%	37%
GRANITE	3,071	1,187	952	1,037	2,139	39%	34%
HILL	13,256	6,422	5,089	5,821	11,511	48%	44%
JEFFERSON	10,702	5,195	4,513	4,813	9,708	49%	45%
JUDITH BASIN	1,747	586	528	565	1,114	34%	32%
LAKE	25,868	14,700	12,601	13,473	27,301	57%	52%
LEWIS & CLARK	59,541	34,590	29,693	32,049	64,283	58%	54%
LIBERTY	2,022	682	571	649	1,253	34%	32%
LINCOLN	17,763	7,224	6,095	6,566	13,319	41%	37%
MADISON	7,777	3,419	2,842	3,179	6,261	44%	41%
MCCONE	1,440	366	332	339	698	25%	24%
MEAGHER	1,638	827	727	786	1,554	50%	48%
MINERAL	3,889	1,956	1,454	1,792	3,410	50%	46%
MISSOULA	104,911	67,317	58,426	62,802	125,743	64%	60%
MUSSELSHELL	4,097	1,287	1,102	1,208	2,389	31%	29%
PARK	14,746	9,020	7,057	7,764	16,077	61%	53%
PETROLEUM	433	128	117	124	245	30%	29%
PHILLIPS	3,331	1,360	1,066	1,282	2,426	41%	38%
PONDERA	4,931	2,627	1,990	2,268	4,618	53%	46%
POWDER RIVER	1,510	375	322	349	697	25%	23%
POWELL	6,230	3,295	2,546	3,088	5,841	53%	50%
PRAIRIE	931	362	331	344	693	39%	37%
RAVALLI	38,686	18,771	15,972	17,657	34,743	49%	46%
RICHLAND	8,978	3,092	2,584	2,951	5,676	34%	33%
ROOSEVELT	8,436	3,318	2,595	2,923	5,913	39%	35%
ROSEBUD	7,211	3,758	3,001	3,381	6,759	52%	47%
SANDERS	10,768	3,851	3,465	3,609	7,316	36%	34%
SHERIDAN	2,847	1,514	1,361	1,452	2,875	53%	51%
SILVER BOW	30,125	18,394	16,353	17,168	34,747	61%	57%
STILLWATER	8,428	3,325	2,753	3,131	6,078	39%	37%
SWEET GRASS	3,273	1,300	1,025	1,211	2,325	40%	37%
TETON	5,160	2,315	1,618	1,950	3,933	45%	38%
TOOLE	4,055	1,690	1,273	1,596	2,963	42%	39%
TREASURE	584	285	223	236	508	49%	40%
VALLEY	6,313	2,482	2,069	2,355	4,551	39%	37%
WHEATLAND	1,823	598	551	572	1,149	33%	31%
WIBAUX	834	246	222	227	468	29%	27%
YELLOWSTONE	136,442	66,999	57,485	61,591	124,484	49%	45%
MONTANA	917,598	472,458	394,261	429,083	866,719	52%	47%