

Weekly COVID-19 Update in Montana (as of 9/3/2021)

This report is a weekly snapshot of COVID-19 activity in Montana. Data are analyzed based on information available as of September 3, 2021. Data are provisional and expected to change as more information is received.

Case Data

Table 1. Summary of COVID-19 Activity – Montana, as of 9/3/2021

	TOTAL	RECENT WEEK	PERCENT CHANGE FROM PREVIOUS WEEK
REPORTED CASES	130,258	4,057	+19%
LABORATORY TESTS	1,643,955	36,950	+19%
HOSPITALIZATIONS	6,524	248	+11%
DEATHS	1,814	27	0%

Figure 1. COVID-19 Cases and Hospitalizations over Time - Montana, as of 9/3/2021

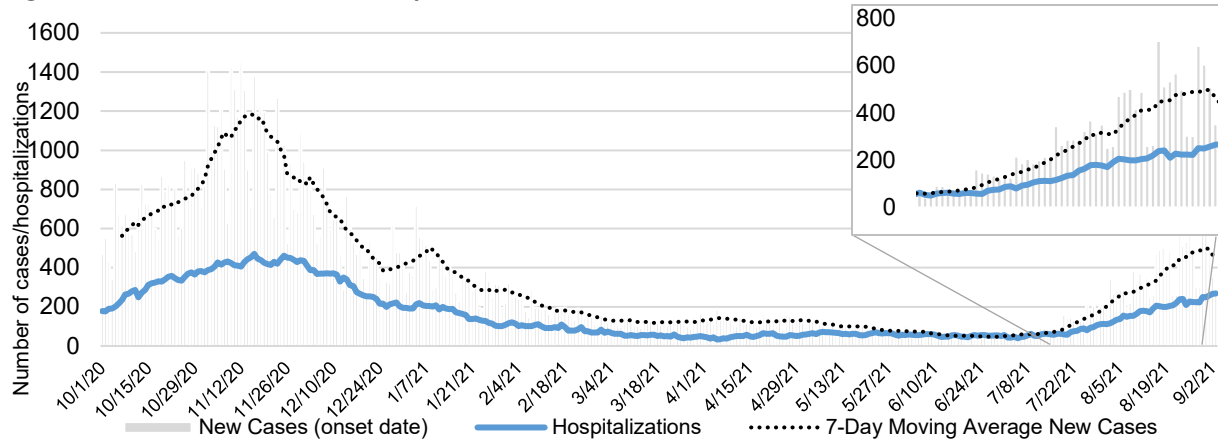
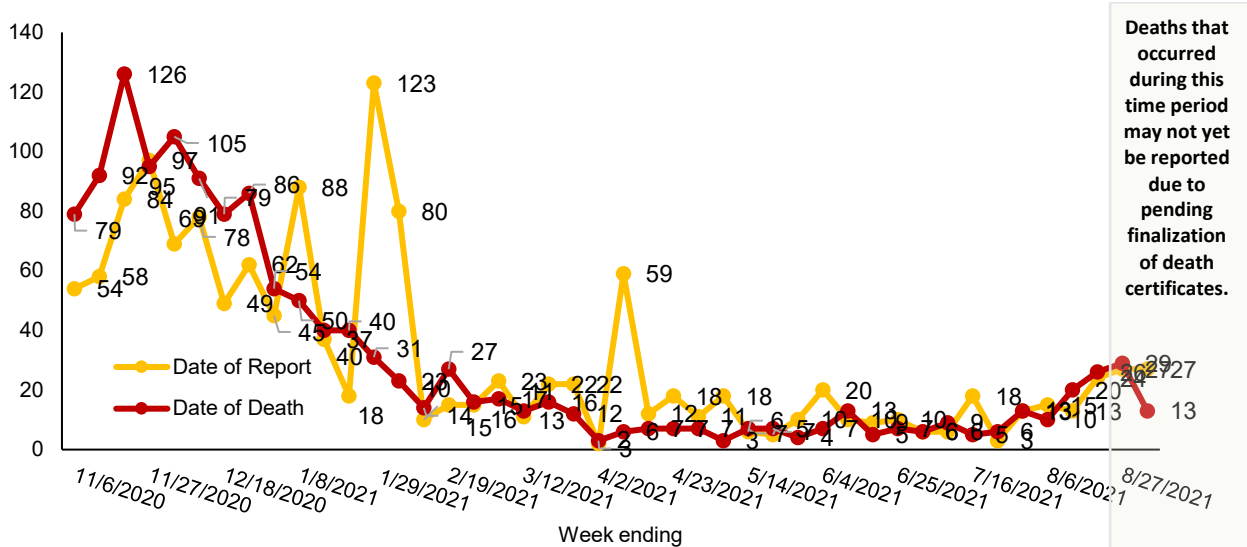


Figure 2. COVID-19 Deaths by Report Date and Date of Death – Montana, 11/1/2020 – 9/3/2021



Vaccine Data

Montana began vaccinating individuals in mid-December 2020 with a phased process: Phase 1A on December 14, 2020, Phase 1B on January 19, 2021, and Phase 1B+ on March 8, 2021. Vaccinations were opened to all Montanans age 16+ on April 1, 2021 and expanded to all Montanans age 12+ on May 10th, 2021. To date, 953,299 doses have been given across the state and 51% of the eligible population is considered fully vaccinated.

Table 2: COVID-19 Vaccine Doses Administered – Montana, as of 9/3/2021

	NUMBER	PERCENT OF ELIGIBLE POPULATION	WEEK ENDING 8/20	WEEK ENDING 8/27	WEEK ENDING 9/30*
TOTAL DOSES ADMINISTERED	953,299		12,343	12,984	10,069
DOSE 1 ADMINISTERED	523,413	57%	6,968	6,580	4,558
FULLY VACCINATED INDIVIDUALS	465,910	51%	4,842	5,332	4,472

*the data for the most recent week are preliminary and are expected to be an underestimate of the doses administered during the week, due to a reporting lag.

Figure 3. COVID-19 Vaccine Doses Administered by Week – Montana, as of 9/3/2021

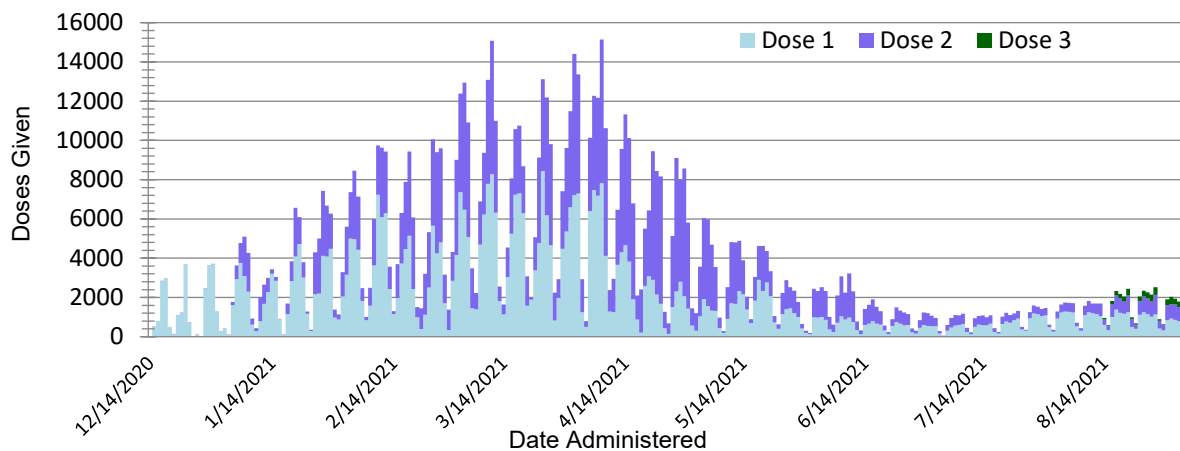
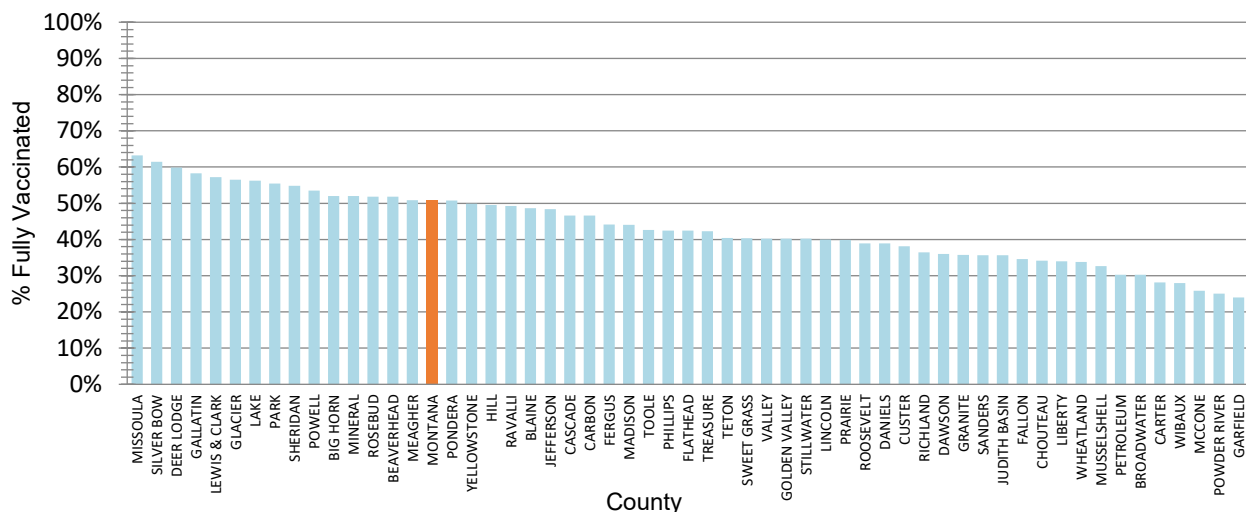


Figure 4. Percent of Eligible Montanans (12+ years) Fully Vaccinated by County – Montana, 9/3/2021



Variant and Breakthrough Cases

A variant has one or more mutations that differentiate it from other variants in circulation. Multiple variants of SARS-CoV-2 have been documented throughout this pandemic. There were 2,626 samples that were sequenced and reported to [GISAID](#) since January 2021. B.1.617.2 (Delta) has been the predominant variant in Montana in recent months. Of 391 specimens collected during the month of August that have been sequenced, 382 (98%) are Delta variant. All samples sequenced between August 28th and September 3rd were resulted as Delta. The charts below reflect information on specimens that were sequenced and reported to GISAID.

Figure 5. Number of COVID-19 samples sequenced by collection date, Montana 9/3/2021 [n=2,626]

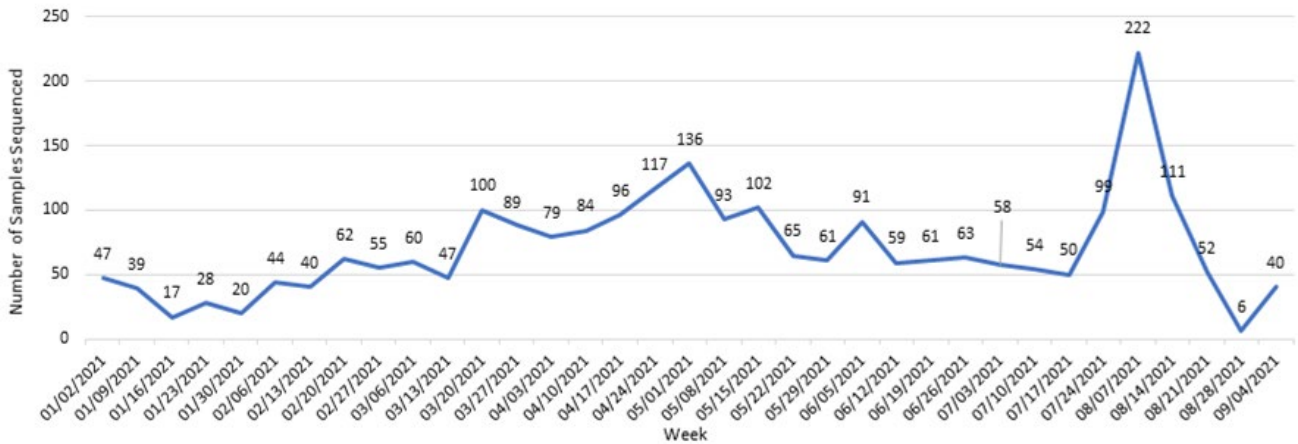
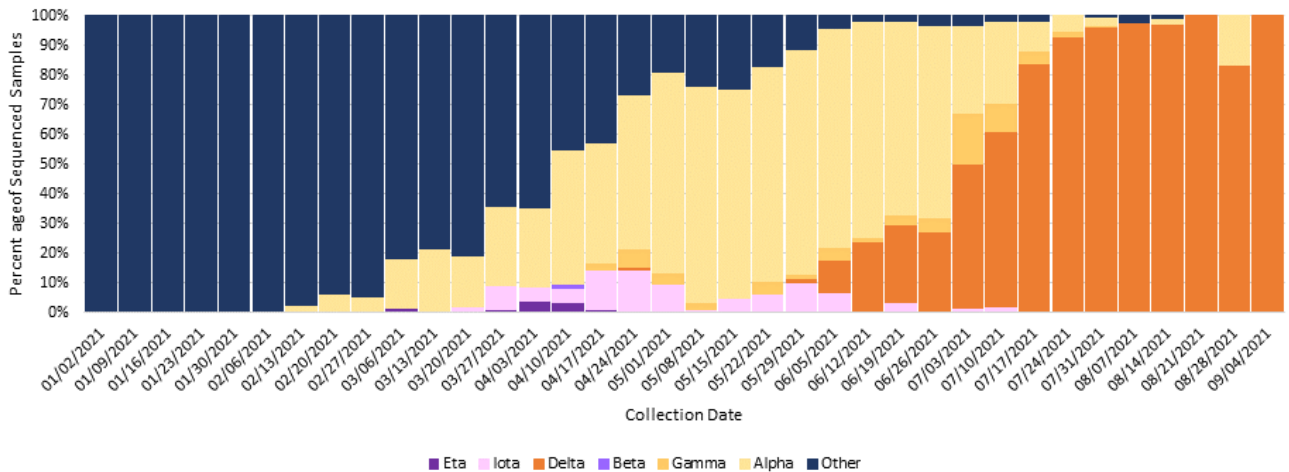


Figure 6. Percent of COVID-19 variants in sequenced samples by collection date, Montana 9/3/2021



A breakthrough COVID-19 infection is defined as a positive SARS-CoV-2 collected ≥ 14 days after completing the primary COVID-19 vaccine series of an FDA-authorized COVID-19 vaccine. Depending on the specific vaccine administered, completion of series could be one or two doses of vaccine. As of 9/7/21, Montana reports 3,240 cases of confirmed breakthrough disease, which includes 211 hospitalizations and 42 deaths. Of those with subtyping performed (n=215), 195 are known to be infected with variants of concern or interest.

Hospitalizations and Deaths and Vaccination Status

COVID-19 related hospitalization and death data from **July 10 – September 3** (last 8 weeks) were analyzed to review vaccination status. Eighty-three percent of Montanans who were hospitalized and 72% of those who died had not received a COVID-19 vaccine (Table 3). Of the 941 individuals who were hospitalized during this time period, 11 (1%) were <18 years old, 164 (17%) were 18 to 44 years old, 318 (34%) were 45 to 64 years old and 448 (48%) were \geq 65 years old.

Table 3. Vaccination status of COVID-19 hospitalizations and deaths – July 10 – September 3, 2021

	HOSPITALIZATIONS	DEATHS
TOTAL REPORTED	941	115
MEDIAN AGE (YEARS)	63	75
AGE RANGE (YEARS)	<1-97	38-96
UNVACCINATED	778 (83%)	83 (72%)
VACCINATED (BREAKTHROUGH CASE)	163 (17%)	32 (28%)