

Vaccine Data

Montana began vaccinating individuals in mid-December 2020 with a phased process: Phase 1A on December 14, 2020, Phase 1B on January 19, 2021, and Phase 1B+ on March 8, 2021. Vaccinations were opened to all Montanans age 16+ on April 1, 2021 and expanded to all Montanans age 12+ on May 10th, 2021. To date, 965,468 doses have been given across the state and 51% of the eligible population is considered fully vaccinated.

Table 2: COVID-19 Vaccine Doses Administered – Montana, as of 9/10/2021

	NUMBER	PERCENT OF ELIGIBLE POPULATION	WEEK ENDING 8/27	WEEK ENDING 9/3	WEEK ENDING 9/10*
TOTAL DOSES ADMINISTERED	965,486		13,448	12,296	8,832
DOSE 1 ADMINISTERED	529,381	58%	6,957	5,908	3,870
FULLY VACCINATED INDIVIDUALS	471,249	51%	5,424	5,186	4,227

*the data for the most recent week are preliminary and are expected to be an underestimate of the doses administered during the week, due to a reporting lag.

Figure 3. COVID-19 Vaccine Doses Administered by Week – Montana, as of 9/10/2021

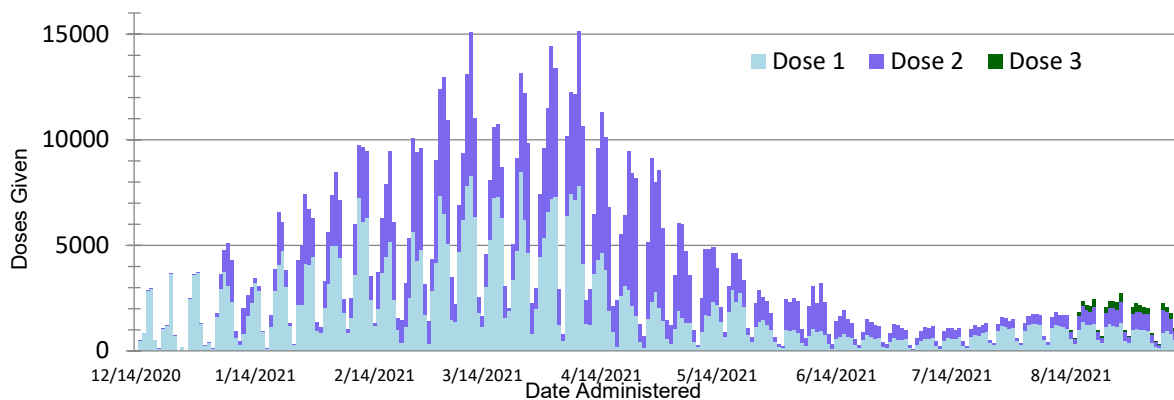
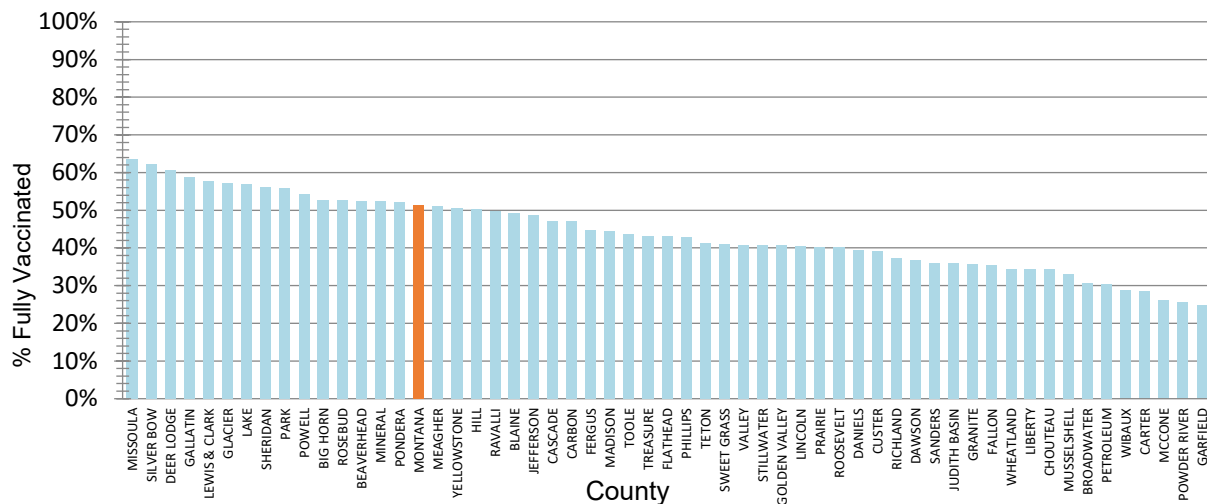


Figure 4. Percent of Eligible Montanans (12+ years) Fully Vaccinated by County – Montana, 9/10/2021



Variant and Breakthrough Cases

A variant has one or more mutations that differentiate it from other variants in circulation. Multiple variants of SARS-CoV-2 have been documented throughout this pandemic. There were 2,828 samples that were sequenced and reported to [GISAID](#) since January 2021. B.1.617.2 (Delta) has been the predominant variant in Montana in recent months. Of 614 specimens collected during the months of August and September that have been sequenced, 605 (99%) are Delta variant. All 112 samples collected and sequenced in the first two weeks of September were resulted as Delta. Not all samples have enough genetic material to be sequenced. The charts below reflect information on specimens that were sequenced and reported to GISAID.

Figure 5. Number of COVID-19 samples sequenced by collection date, Montana 9/14/2021 [n=2,828]

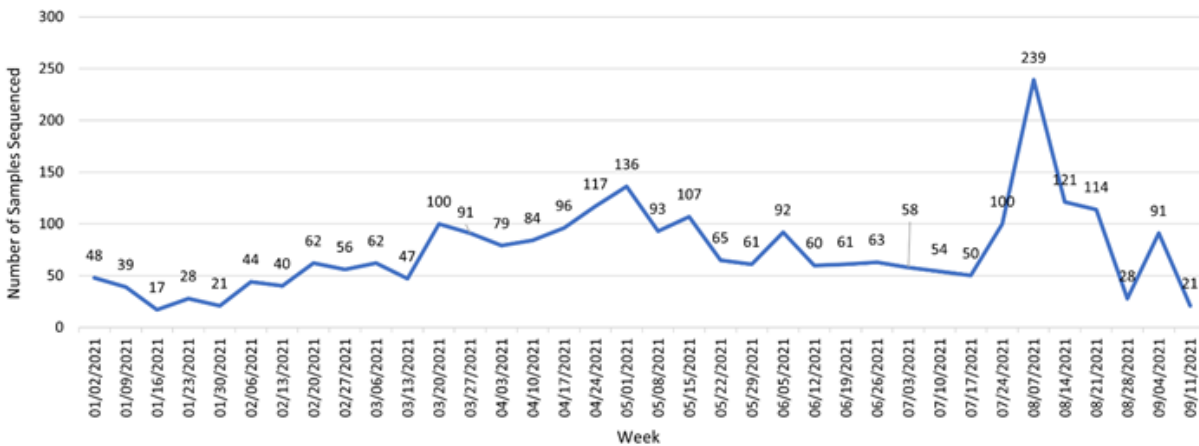
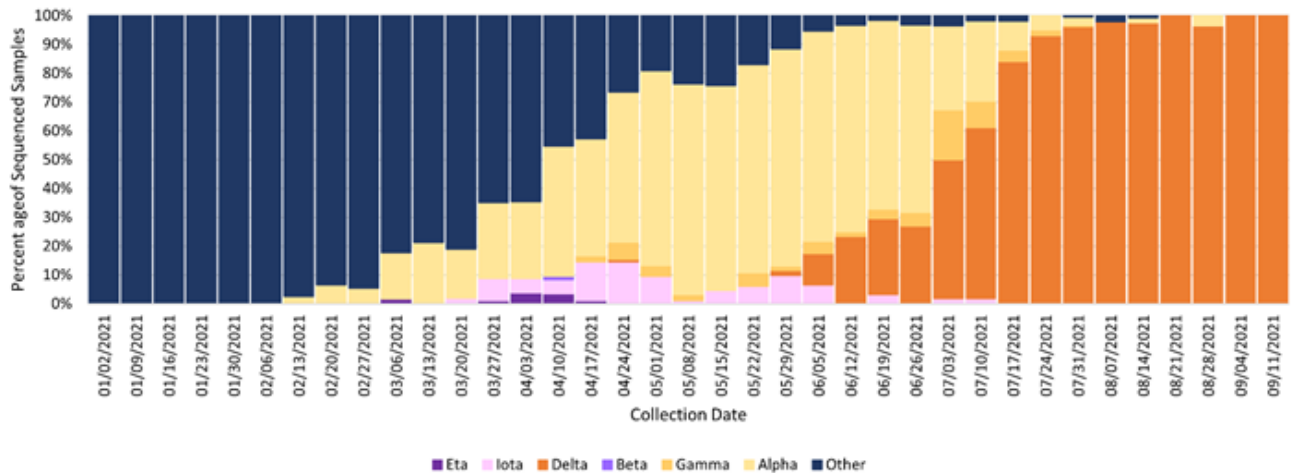


Figure 6. Percent of COVID-19 variants in sequenced samples by collection date, Montana 9/14/2021



A breakthrough COVID-19 infection is defined as a positive SARS-CoV-2 collected ≥ 14 days after completing the primary COVID-19 vaccine series of an FDA-authorized COVID-19 vaccine. Depending on the specific vaccine administered, completion of series could be one or two doses of vaccine. As of 9/14/21, Montana reports 4,128 cases of confirmed breakthrough disease, which includes 250 hospitalizations and 50 deaths. Of those with subtyping performed ($n=276$), 244 are known to be infected with variants of concern or interest.

Hospitalizations and Deaths and Vaccination Status

COVID-19-related hospitalizations and deaths were analyzed between **April 1 and September 10** to review vaccination status. Since the beginning of April this year, 87% of Montanans who were hospitalized and 78% of those who died were unvaccinated at the time of infection. Of the 1,873 individuals who were hospitalized during this time period, 22 (1%) were <18 years old, 323 (17%) were 18 to 44 years old, 652 (35%) were 45 to 64 years old and 876 (47%) were \geq 65 years old.

Additionally, COVID-19-related hospitalization and death data from **July 17 – September 10** (last 8 weeks) were analyzed to review vaccination status. Eighty-three percent of Montanans who were hospitalized and 73% of those who died had not received a COVID-19 vaccine (Table 3). Of the 1,095 individuals who were hospitalized during this time period, 14 (1%) were <18 years old, 193 (18%) were 18 to 44 years old, 357 (33%) were 45 to 64 years old and 531 (48%) were \geq 65 years old.

Table 3. Vaccination status of COVID-19 hospitalizations and deaths – April 1 to September 10, 2021

	HOSPITALIZATIONS	DEATHS
TOTAL REPORTED	1,873	222
MEDIAN AGE (YEARS)	63	75
AGE RANGE (YEARS)	<1-102	26-96
UNVACCINATED	1,636 (87%)	174 (78%)
VACCINATED (BREAKTHROUGH CASE)	237 (13%)	48 (22%)

Table 4. Vaccination status of COVID-19 hospitalizations and deaths – July 17 – September 10, 2021

	HOSPITALIZATIONS	DEATHS
TOTAL REPORTED	1,095	130
MEDIAN AGE (YEARS)	64	75
AGE RANGE (YEARS)	<1-99	26-96
UNVACCINATED	906 (83%)	95 (73%)
VACCINATED (BREAKTHROUGH CASE)	189 (17%)	35 (27%)

County name	Eligible population 12+	Dose 1	Dose 2	Dose 3	Fully Immunized	Total Doses Administered	Percent eligible with first dose (12+)	Percent Fully Vaccinated (12+)
BEAVERHEAD	8,412	4,737	3,799	42	4,419	8,578	56%	53%
BIG HORN	10,303	6,228	5,174	42	5,433	11,444	60%	53%
BLAINE	5,359	3,014	2,474	31	2,639	5,519	56%	49%
BROADWATER	5,443	1,978	1,446	13	1,660	3,437	36%	30%
CARBON	9,621	4,843	4,245	46	4,521	9,134	50%	47%
CARTER	1,051	326	284	5	299	615	31%	28%
CASCADE	68,949	36,143	29,206	411	32,518	65,760	52%	47%
CHOUTEAU	4,903	1,896	1,525	11	1,682	3,432	39%	34%
CUSTER	9,855	4,284	3,427	30	3,849	7,741	43%	39%
DANIELS	1,454	627	526	4	571	1,157	43%	39%
DAWSON	7,410	3,005	2,469	18	2,720	5,492	41%	37%
DEER LODGE	8,375	5,507	4,529	58	5,064	10,094	66%	60%
FALLON	2,330	920	785	2	824	1,707	39%	35%
FERGUS	9,561	4,651	3,947	56	4,275	8,654	49%	45%
FLATHEAD	88,987	43,838	34,802	462	38,276	79,102	49%	43%
GALLATIN	99,225	69,245	53,445	443	58,468	123,133	70%	59%
GARFIELD	1,066	282	227	0	264	509	26%	25%
GLACIER	10,794	8,774	5,704	30	6,165	14,508	81%	57%
GOLDEN VALLEY	703	310	257	2	286	569	44%	41%
GRANITE	3,071	1,291	999	13	1,099	2,303	42%	36%
HILL	13,256	7,438	5,875	41	6,655	13,354	56%	50%
JEFFERSON	10,702	5,730	4,868	91	5,219	10,689	54%	49%
JUDITH BASIN	1,747	667	577	24	628	1,268	38%	36%
LAKE	25,868	16,440	13,676	159	14,718	30,275	64%	57%
LEWIS & CLARK	59,541	37,830	31,815	713	34,356	70,358	64%	58%
LIBERTY	2,022	746	606	23	696	1,375	37%	34%
LINCOLN	17,763	8,103	6,625	122	7,193	14,850	46%	40%
MADISON	7,777	3,782	3,071	24	3,458	6,877	49%	44%
MCCONE	1,440	404	369	1	376	774	28%	26%
MEAGHER	1,638	894	771	5	836	1,670	55%	51%
MINERAL	3,889	2,231	1,613	7	2,035	3,851	57%	52%
MISSOULA	104,911	72,649	61,522	825	66,802	134,996	69%	64%
MUSSELSHELL	4,097	1,472	1,190	10	1,351	2,672	36%	33%
PARK	14,746	9,604	7,409	75	8,217	17,088	65%	56%
PETROLEUM	433	138	124	1	132	263	32%	30%
PHILLIPS	3,331	1,562	1,153	11	1,426	2,726	47%	43%
PONDERA	4,931	3,016	2,251	30	2,572	5,297	61%	52%
POWDER RIVER	1,510	417	347	4	385	768	28%	25%
POWELL	6,230	3,722	2,714	43	3,370	6,479	60%	54%
PRAIRIE	931	405	358	1	375	764	44%	40%
RAVALLI	38,686	20,888	17,229	342	19,250	38,459	54%	50%
RICHLAND	8,978	3,605	2,848	37	3,343	6,490	40%	37%
ROOSEVELT	8,436	4,031	2,992	5	3,397	7,028	48%	40%
ROSEBUD	7,211	4,368	3,379	23	3,801	7,770	61%	53%
SANDERS	10,768	4,270	3,669	19	3,874	7,958	40%	36%
SHERIDAN	2,847	1,685	1,479	11	1,596	3,175	59%	56%
SILVER BOW	30,125	20,519	17,680	346	18,712	38,545	68%	62%
STILLWATER	8,428	3,727	2,961	31	3,433	6,719	44%	41%
SWEET GRASS	3,273	1,467	1,141	6	1,342	2,614	45%	41%
TETON	5,160	2,574	1,744	12	2,127	4,330	50%	41%
TOOLE	4,055	1,923	1,429	32	1,769	3,384	47%	44%
TREASURE	584	325	235	1	252	561	56%	43%
VALLEY	6,313	2,778	2,252	35	2,572	5,065	44%	41%
WHEATLAND	1,823	679	592	1	628	1,272	37%	34%
WIBAUX	834	285	232	1	239	518	34%	29%
YELLOWSTONE	136,442	77,108	64,124	1,084	69,082	142,316	57%	51%
MONTANA	917,598	529,381	430,190	5,915	471,249	965,486	58%	51%