

Weekly COVID-19 Update in Montana (as of 9/24/2021)

This report is a weekly snapshot of COVID-19 activity in Montana. Data are analyzed based on information available as of September 17, 2021. Data are provisional and expected to change as more information is received.

Case Data

Table 1. Summary of COVID-19 Activity – Montana, as of 9/24/2021

	TOTAL	RECENT WEEK	PERCENT CHANGE FROM PREVIOUS WEEK
REPORTED CASES	146,964	6,075	-3%
LABORATORY TESTS	1,784,975	54,004	+2%
HOSPITALIZATIONS	7,443	386	+8%
DEATHS	1,973	86	+92%

Figure 1. COVID-19 Cases and Hospitalizations over Time - Montana, as of 9/24/2021

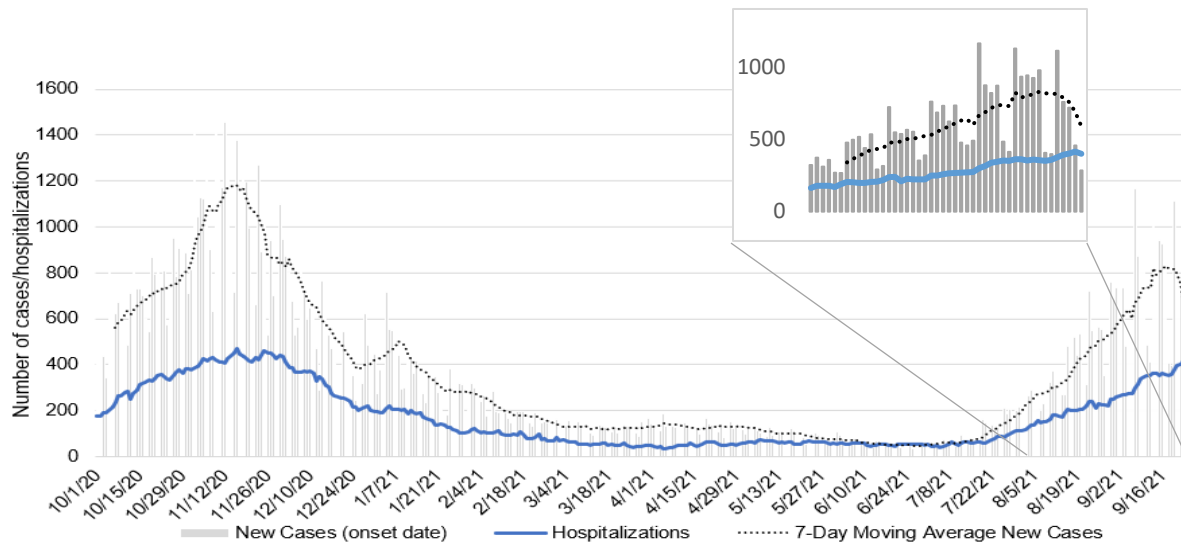
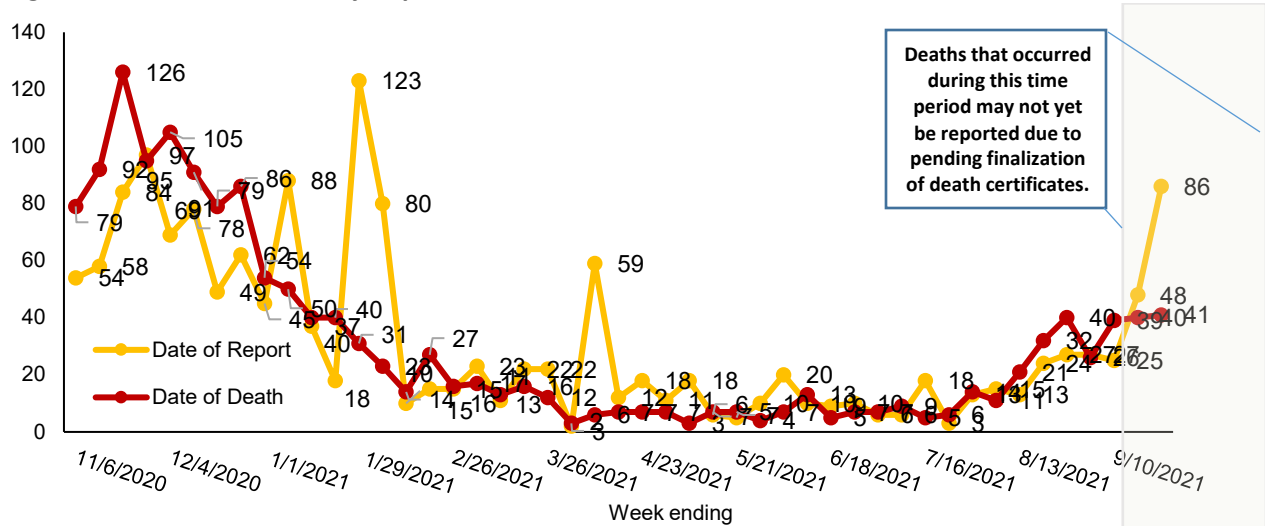


Figure 2. COVID-19 Deaths by Report Date and Date of Death – Montana, 11/1/2020 – 9/24/2021



Vaccine Data

Montana began vaccinating individuals in mid-December 2020 with a phased process: Phase 1A on December 14, 2020, Phase 1B on January 19, 2021, and Phase 1B+ on March 8, 2021. Vaccinations were opened to all Montanans age 16+ on April 1, 2021 and expanded to all Montanans age 12+ on May 10th, 2021. To date, 990,235 doses have been given across the state and 53% of the eligible population is considered fully vaccinated.

Table 2: COVID-19 Vaccine Doses Administered – Montana, as of 9/24/2021

	NUMBER	PERCENT OF ELIGIBLE POPULATION	WEEK ENDING 9/10	WEEK ENDING 9/17	WEEK ENDING 9/24*
TOTAL DOSES ADMINISTERED	990,235		11,030	11,809	9,193
DOSE 1 ADMINISTERED	540,345	59%	5,171	5,176	3,686
FULLY VACCINATED INDIVIDUALS	482,653	53%	5,002	5,723	4,187

*the data for the most recent week are preliminary and are expected to be an underestimate of the doses administered during the week, due to a reporting lag.

Figure 3. COVID-19 Vaccine Doses Administered by Week – Montana, as of 9/24/2021

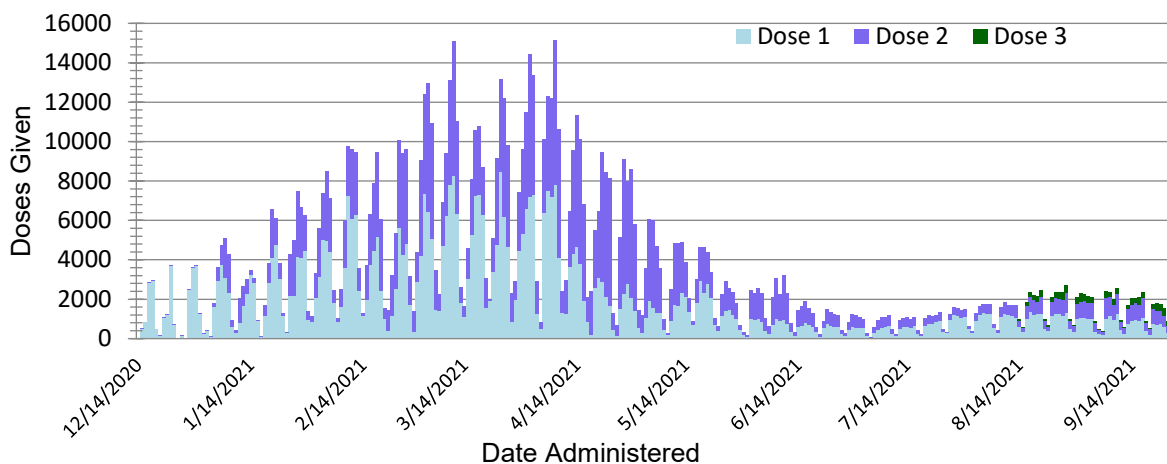
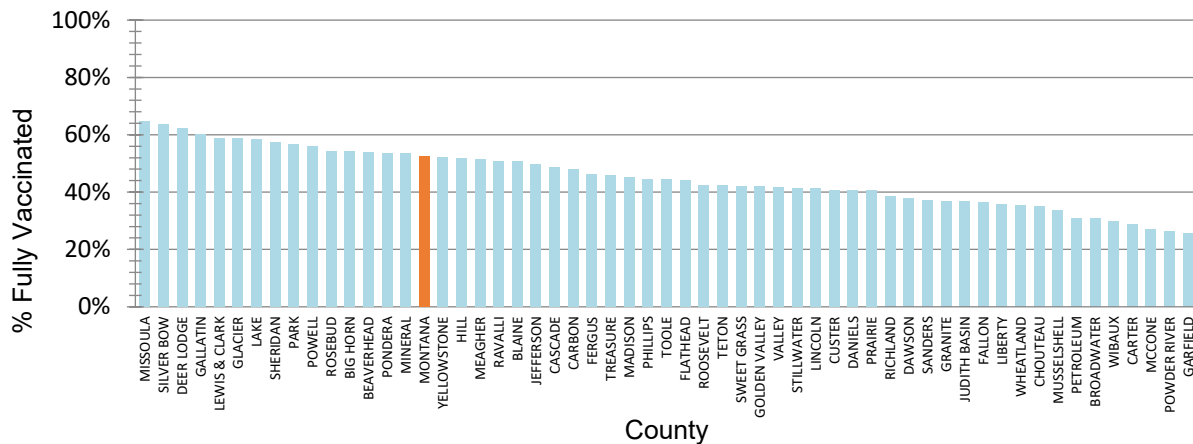


Figure 4. Percent of Eligible Montanans (12+ years) Fully Vaccinated by County – Montana, 9/24/2021



Variant and Breakthrough Cases

A variant has one or more mutations that differentiate it from other variants in circulation. Multiple variants of SARS-CoV-2 have been documented throughout this pandemic. There were 3,312 samples that were sequenced and reported to [GISAID](#) since January 2021. CDC updated their COVID variant classification system. Delta is the only Variant of Concern at this time, and it is the dominant circulating strain in Montana. Every specimen collected and sequenced in September is Delta. Aside from Delta, all other former variants of concern and interest have been re-classified as Variants Being Monitored. Among Variants Being Monitored, the Mu variant has been identified in 9 specimens collected 6/13/2021–8/21/2021.

Figure 5. Number of COVID-19 samples sequenced by collection date, Montana 9/28/2021 [n=3,312]

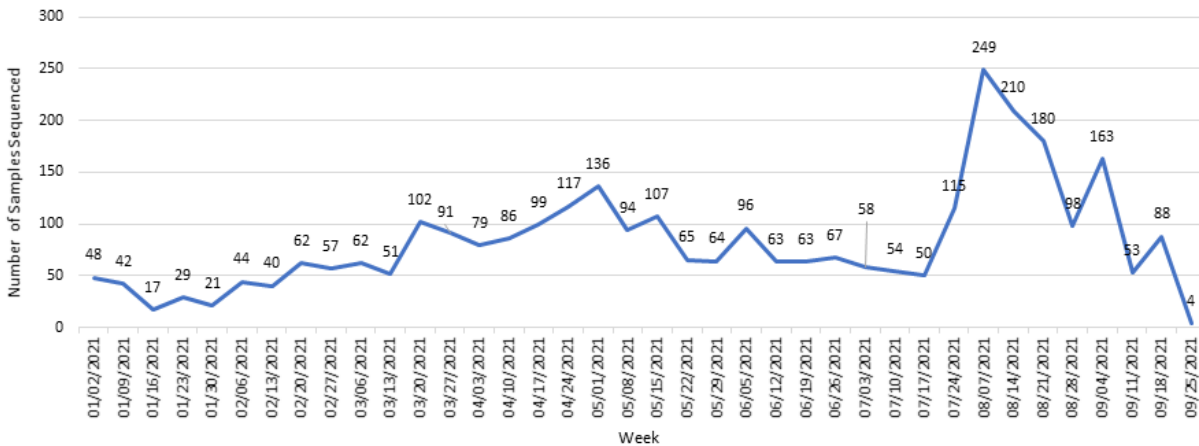
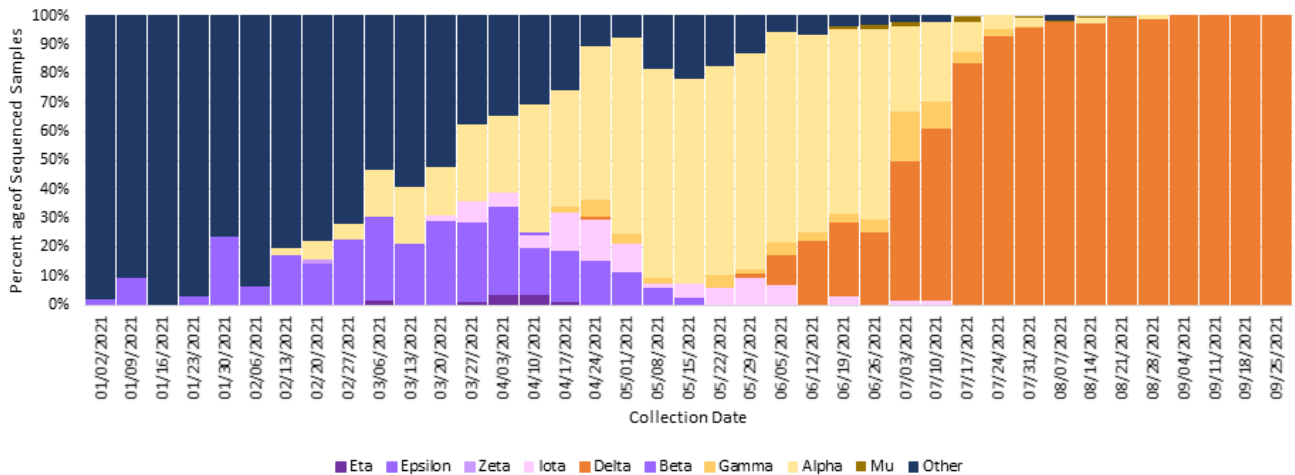


Figure 6. Percent of COVID-19 variants in sequenced samples by collection date, Montana 9/28/2021



A breakthrough COVID-19 infection is defined as a positive SARS-CoV-2 collected ≥ 14 days after completing the primary COVID-19 vaccine series of an FDA-authorized COVID-19 vaccine. Depending on the specific vaccine administered, completion of series could be one or two doses of vaccine. As of 9/28/21, Montana reports 6,196 cases of confirmed breakthrough disease, which includes 377 hospitalizations and 75 deaths.

Hospitalizations and Deaths and Vaccination Status

COVID-19-related hospitalizations and deaths were analyzed between **April 1 and September 24** to review vaccination status. Since the beginning of April this year, 86% of Montanans who were hospitalized and 79% of those who died were unvaccinated at the time of infection. Of the 2,598 individuals who were hospitalized during this time period, 36 (1%) were <18 years old, 444 (17%) were 18 to 44 years old, 916 (35%) were 45 to 64 years old and 1,202 (46%) were ≥65 years old.

Additionally, COVID-19-related hospitalization and death data from **July 31 – September 24** (last 8 weeks) were analyzed to review vaccination status. Eighty-three percent of Montanans who were hospitalized and 78% of those who died had not received a COVID-19 vaccine (Table 4). Of the 1,664 individuals who were hospitalized during this time period, 26 (2%) were <18 years old, 284 (17%) were 18 to 44 years old, 571 (34%) were 45 to 64 years old and 783 (47%) were ≥65 years old. The proportion of children less than 18 years old diagnosed with COVID increased over the last week.

Table 3. Vaccination status of COVID-19 hospitalizations and deaths – April 1 to September 24, 2021

	HOSPITALIZATIONS	DEATHS
TOTAL REPORTED	2,598	350
UNVACCINATED	2,234 (86%)	277 (79%)
VACCINATED (BREAKTHROUGH CASE)	364 (14%)	73 (21%)
UNVACCINATED AGE RANGE IN YEARS (MEDIAN AGE)	<1-102 (61)	24-96 (71)
VACCINATED AGE RANGE IN YEARS (MEDIAN AGE)	16-101 (74)	53-96 (82)

Table 4. Vaccination status of COVID-19 hospitalizations and deaths – July 31 – September 24, 2021

	HOSPITALIZATIONS	DEATHS
TOTAL REPORTED	1,664	227
UNVACCINATED	1,375 (83%)	176 (78%)
VACCINATED (BREAKTHROUGH CASE)	289 (17%)	51 (22%)
UNVACCINATED AGE RANGE IN YEARS (MEDIAN AGE)	<1-99(60)	24-96 (70)
VACCINATED AGE RANGE IN YEARS (MEDIAN AGE)	16-101(74)	53-94 (83)

County name	Eligible population 12+	Dose 1	Dose 2	Dose 3	Fully Immunized	Total Doses Administered	Percent eligible with first dose (12+)	Percent Fully Vaccinated (12+)
BEAVERHEAD	8,412	4,830	3,891	58	4,521	8,779	57%	54%
BIG HORN	10,303	6,403	5,312	50	5,572	11,765	62%	54%
BLAINE	5,359	3,068	2,551	43	2,721	5,662	57%	51%
BROADWATER	5,443	1,987	1,458	21	1,675	3,466	37%	31%
CARBON	9,621	4,915	4,347	69	4,624	9,331	51%	48%
CARTER	1,051	334	288	5	303	627	32%	29%
CASCADE	68,949	36,880	30,064	820	33,442	67,764	53%	49%
CHOUTEAU	4,903	1,925	1,552	19	1,709	3,496	39%	35%
CUSTER	9,855	4,436	3,574	46	4,013	8,056	45%	41%
DANIELS	1,454	645	546	8	591	1,199	44%	41%
DAWSON	7,410	3,075	2,555	25	2,815	5,655	41%	38%
DEER LODGE	8,375	5,628	4,657	103	5,198	10,388	67%	62%
FALLON	2,330	941	814	3	853	1,758	40%	37%
FERGUS	9,561	4,776	4,053	107	4,398	8,936	50%	46%
FLATHEAD	88,987	44,953	35,709	775	39,319	81,437	51%	44%
GALLATIN	99,225	70,421	54,562	674	59,694	125,657	71%	60%
GARFIELD	1,066	291	234	0	273	525	27%	26%
GLACIER	10,794	8,891	5,862	45	6,337	14,798	82%	59%
GOLDEN VALLEY	703	316	267	3	296	586	45%	42%
GRANITE	3,071	1,320	1,032	23	1,131	2,375	43%	37%
HILL	13,256	7,637	6,049	58	6,838	13,744	58%	52%
JEFFERSON	10,702	5,811	4,972	145	5,326	10,928	54%	50%
JUDITH BASIN	1,747	687	588	36	640	1,311	39%	37%
LAKE	25,868	16,867	14,004	248	15,076	31,119	65%	58%
LEWIS & CLARK	59,541	38,402	32,407	995	34,966	71,804	64%	59%
LIBERTY	2,022	769	628	38	722	1,435	38%	36%
LINCOLN	17,763	8,232	6,744	173	7,327	15,149	46%	41%
MADISON	7,777	3,864	3,133	43	3,523	7,040	50%	45%
MCCONE	1,440	410	380	1	388	791	28%	27%
MEAGHER	1,638	905	775	8	844	1,688	55%	52%
MINERAL	3,889	2,280	1,647	16	2,080	3,943	59%	53%
MISSOULA	104,911	73,640	62,477	1,256	67,884	137,373	70%	65%
MUSSELSHELL	4,097	1,504	1,218	29	1,383	2,751	37%	34%
PARK	14,746	9,751	7,551	113	8,359	17,415	66%	57%
PETROLEUM	433	141	126	1	134	268	33%	31%
PHILLIPS	3,331	1,594	1,202	13	1,478	2,809	48%	44%
PONDERA	4,931	3,083	2,312	64	2,645	5,459	63%	54%
POWDER RIVER	1,510	436	357	4	398	797	29%	26%
POWELL	6,230	3,813	2,784	53	3,477	6,650	61%	56%
PRAIRIE	931	414	361	2	378	777	44%	41%
RAVALLI	38,686	21,323	17,589	527	19,662	39,439	55%	51%
RICHLAND	8,978	3,748	2,946	56	3,476	6,750	42%	39%
ROOSEVELT	8,436	4,199	3,133	6	3,574	7,338	50%	42%
ROSEBUD	7,211	4,526	3,484	33	3,911	8,043	63%	54%
SANDERS	10,768	4,378	3,778	46	4,001	8,202	41%	37%
SHERIDAN	2,847	1,727	1,511	12	1,634	3,250	61%	57%
SILVER BOW	30,125	20,967	18,086	532	19,179	39,585	70%	64%
STILLWATER	8,428	3,801	3,020	62	3,497	6,883	45%	41%
SWEET GRASS	3,273	1,504	1,178	20	1,380	2,702	46%	42%
TETON	5,160	2,627	1,790	19	2,182	4,436	51%	42%
TOOLE	4,055	1,950	1,459	55	1,797	3,464	48%	44%
TREASURE	584	339	250	1	268	590	58%	46%
VALLEY	6,313	2,832	2,305	43	2,635	5,180	45%	42%
WHEATLAND	1,823	685	607	8	644	1,300	38%	35%
WIBAUX	834	294	242	1	249	537	35%	30%
YELLOWSTONE	136,442	79,170	66,108	1,747	71,213	147,025	58%	52%
MONTANA	917,598	540,345	440,529	9,361	482,653	990,235	59%	53%