

Weekly COVID-19 Update in Montana (as of 11/5/2021)

This report is a weekly snapshot of COVID-19 activity in Montana. Data are analyzed based on information available as of November 5, 2021. Data are provisional and expected to change as more information is received.

Case Data

Table 1. Summary of COVID-19 Activity – Montana, as of 11/5/2021

	TOTAL	RECENT WEEK	PERCENT CHANGE FROM PREVIOUS WEEK
REPORTED CASES	181,054	4,406	-14%
LABORATORY TESTS	2,055,859	40,988	-6%
HOSPITALIZATIONS	9,153	370	-22%
DEATHS	2,423	58	-54%

Figure 1. COVID-19 Cases and Hospitalizations over Time - Montana, as of 11/5/2021

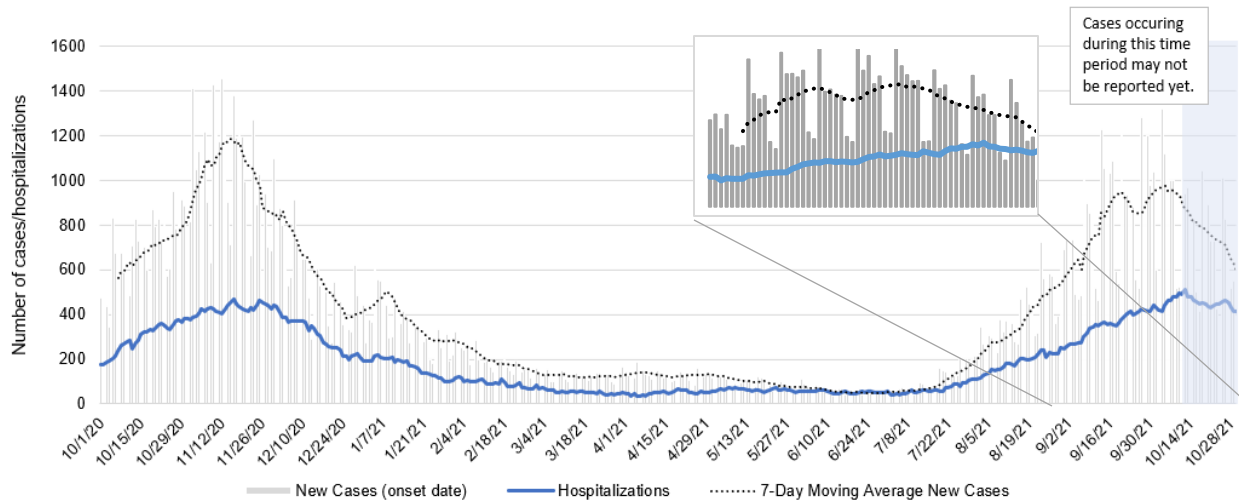
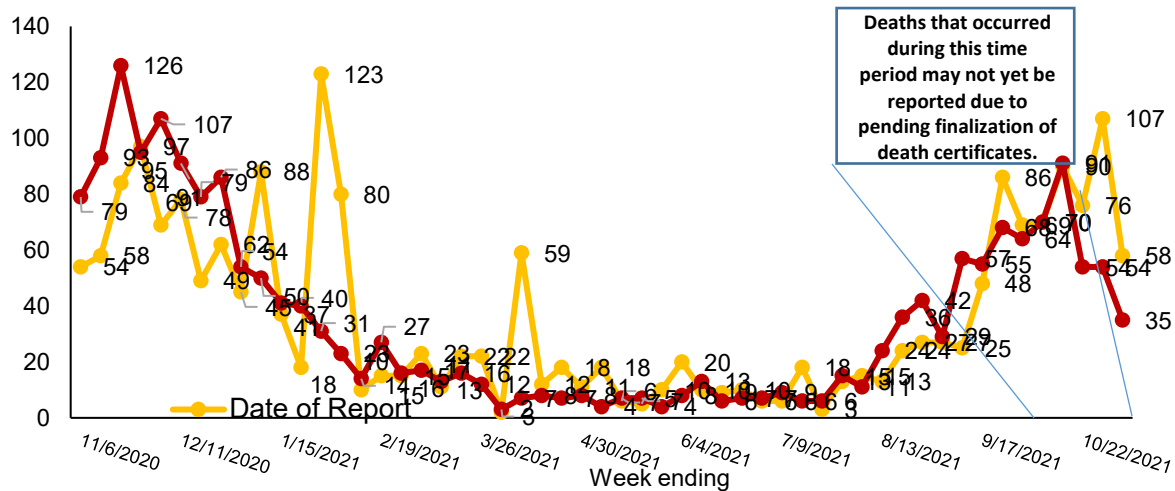


Figure 2. COVID-19 Deaths by Report Date and Date of Death – Montana, 11/1/2020 – 11/5/2021



Vaccine Data

Montana began vaccinating individuals in mid-December 2020 with a phased process: Phase 1A on December 14, 2020, Phase 1B on January 19, 2021, and Phase 1B+ on March 8, 2021. Vaccinations were opened to all Montanans age 16+ on April 1, 2021 and expanded to all Montanans age 12+ on May 10th, 2021. To date, 1,130,304 doses have been given across the state and 55% of the eligible population is considered fully vaccinated.

Table 2: COVID-19 Vaccine Doses Administered – Montana, as of 11/5/2021

	NUMBER	PERCENT OF ELIGIBLE POPULATION	WEEK ENDING 10/22	WEEK ENDING 10/29	WEEK ENDING 11/5*
TOTAL DOSES ADMINISTERED	1,130,304		16,661	28,923	25,802
DOSE 1 ADMINISTERED	566,214	62%	3,168	3,806	2,902
FULLY VACCINATED INDIVIDUALS	506,663	55%	3,495	3,324	2,624

*the data for the most recent week are preliminary and are expected to be an underestimate of the doses administered during the week, due to a reporting lag.

Figure 3. COVID-19 Vaccine Doses Administered by Week – Montana, as of 11/5/2021

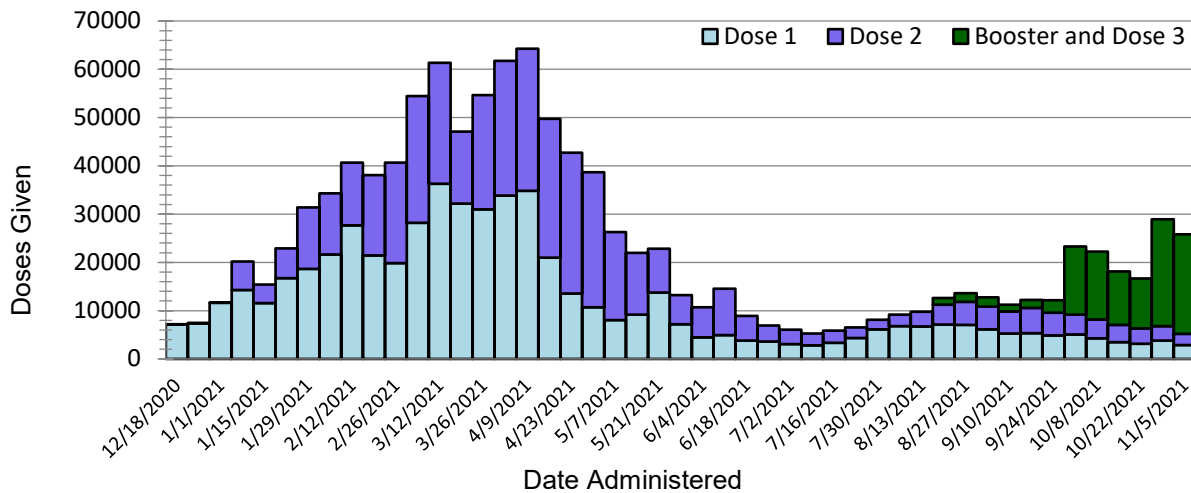
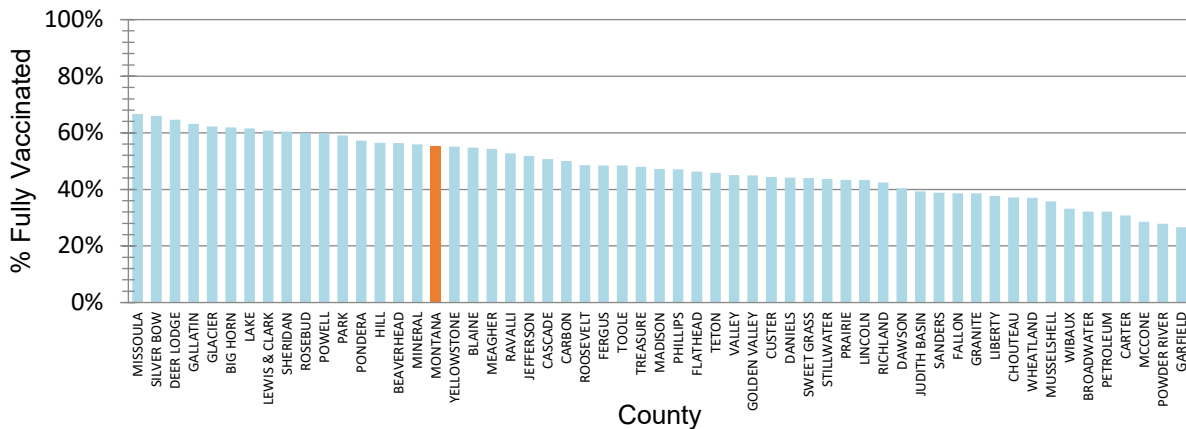


Figure 4. Percent of Eligible Montanans (12+ years) Fully Vaccinated by County – Montana, 11/5/2021



Variant and Breakthrough Cases

Figure 6 displays the percentage of the most common SARS-CoV-2 lineages detected each week, among all samples sequenced that were collected that week. There were 6,227 samples that were sequenced and their lineages were reported to [GISAID](#) since September 2020; figure 5 displays the number of specimens sequenced by week. A variant is a lineage that has one or more mutations that differentiate it from other lineages in circulation. Delta is the only Variant of Concern at this time, and it is the dominant circulating strain in Montana. Of specimens collected and sequenced in October and November 1,231/1,231 (100%) are Delta. Aside from Delta, all other former variants of concern and interest have been re-classified as Variants Being Monitored. The overall trends in variants show that, March through June, the Alpha variant (light yellow) was predominant. Beginning in July, the Delta variant (dark orange) has been detected most often among sequenced samples, and is currently the dominant variant in Montana. The charts below reflect information on specimens that were sequenced and reported to GISAID.

Figure 5. Number of COVID-19 samples sequenced by collection date, Montana 11/9/2021 [n=6,227]

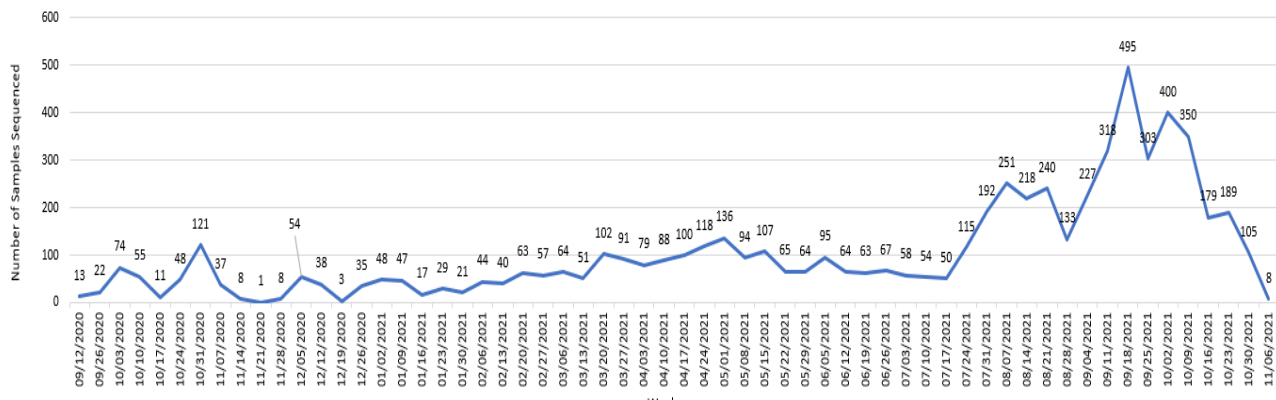
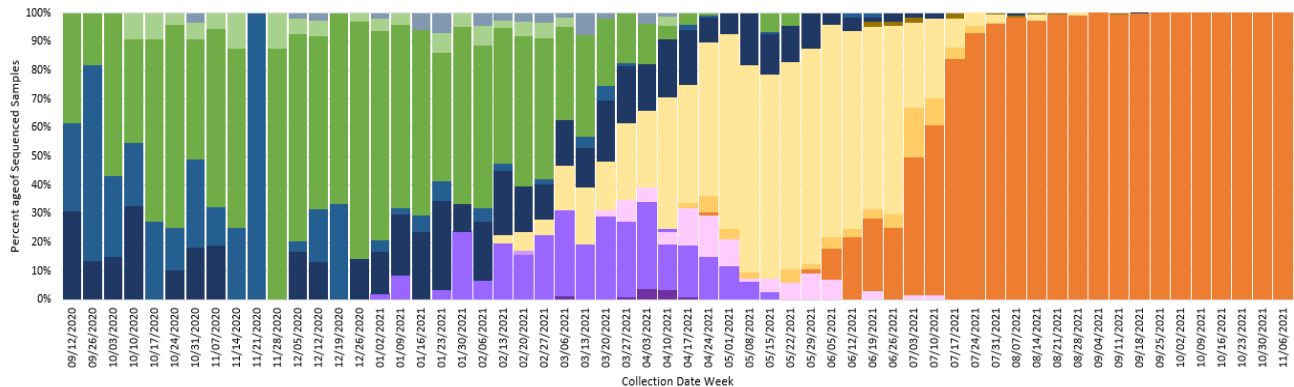


Figure 6. Percent of COVID-19 variants in sequenced samples by collection date, Montana 11/9/2021



A breakthrough COVID-19 infection is defined as a positive SARS-CoV-2 specimen collected ≥ 14 days after completing the primary COVID-19 vaccine series of an FDA-authorized COVID-19 vaccine. Depending on the specific vaccine administered, completion of series could be one or two doses of vaccine. As of 11/9/21, Montana reports 12,688 cases of confirmed breakthrough disease, which includes 711 hospitalizations and 191 deaths. Over the past 8 weeks (September 11 – November 5) the number of cases among unvaccinated individuals was 4.6 times higher than the number of cases among vaccinated individuals; the number of hospitalizations and deaths among unvaccinated individuals were 4.4 and 3.3 times higher, respectively, compared to vaccinated individuals.

Hospitalizations and Deaths and Vaccination Status

COVID-19-related hospitalizations and deaths were analyzed between **April 1 and November 5** to review vaccination status. Since the beginning of April this year, 84% of Montanans who were hospitalized and 77% of those who died were unvaccinated at the time of infection (Table 3). Of the 4,306 individuals who were hospitalized during this time period, 69 (2%) were <18 years old, 682 (16%) were 18 to 44 years old, 1,501 (35%) were 45 to 64 years old and 2,054 (48%) were ≥ 65 years old.

Additionally, COVID-19-related hospitalization and death data from **September 11– November 5** (last 8 weeks) were analyzed to review vaccination status. Eighty-one percent of Montanans who were hospitalized and 76% of those who died had not received a COVID-19 vaccine (Table 4). Of the 2,145 individuals who were hospitalized during this time period, 42 (2%) were <18 years old, 302 (14%) were 18 to 44 years old, 732 (34%) were 45 to 64 years old and 1,069 (50%) were ≥ 65 years old.

Table 3. Vaccination status of COVID-19 hospitalizations and deaths – April 1 to November 5, 2021

	HOSPITALIZATIONS	DEATHS
TOTAL REPORTED	4,306	793
UNVACCINATED	3,615 (84%)	609 (77%)
VACCINATED (BREAKTHROUGH CASE)	691 (16%)	184 (23%)
UNVACCINATED AGE RANGE IN YEARS (MEDIAN AGE)	<1-102 (61)	24-103 (71)
VACCINATED AGE RANGE IN YEARS (MEDIAN AGE)	16-101 (75)	43-99 (83)

Table 4. Vaccination status of COVID-19 hospitalizations and deaths – September 11 – November 5, 2021

	HOSPITALIZATIONS	DEATHS
TOTAL REPORTED	2,145	412
UNVACCINATED	1,746 (81%)	315 (76%)
VACCINATED (BREAKTHROUGH CASE)	399 (19%)	97 (24%)
UNVACCINATED AGE RANGE IN YEARS (MEDIAN AGE)	<1-97 (62)	29-103 (70)
VACCINATED AGE RANGE IN YEARS (MEDIAN AGE)	16-100 (75)	45-99 (84)

Reported COVID-19 Cases by County with Trendline – Montana, past 6 weeks

County	1-Oct	8-Oct	15-Oct	22-Oct	29-Oct	5-Nov	change from previous week*	Trendline
Beaverhead	75	67	13	52	47	13	-34	
Big Horn	69	22	31	45	32	52	20	
Blaine	28	73	140	40	25	63	38	
Broadwater	46	28	25	25	19	32	13	
Carbon	13	64	51	76	14	40	26	
Carter	1	1	7	1	1	1	0	
Cascade	502	638	374	668	339	388	49	
Chouteau	17	14	25	16	35	31	-4	
Custer	137	104	88	95	52	70	18	
Daniels	6	20	12	18	8	2	-6	
Dawson	37	71	60	65	60	65	5	
Deer Lodge	40	53	34	35	34	19	-15	
Fallon	12	3	4	12	26	11	-15	
Fergus	23	38	33	106	70	51	-19	
Flathead	585	606	502	470	516	405	-111	
Gallatin	498	618	502	651	474	464	-10	
Garfield	6	6	3	7	11	9	-2	
Glacier	48	81	83	65	60	65	5	
Golden Valley	0	1	8	6	22	6	-16	
Granite	8	26	21	26	14	8	-6	
Hill	109	119	137	85	69	56	-13	
Jefferson	75	68	50	64	39	47	8	
Judith Basin	6	4	6	3	7	6	-1	
Lake	230	235	347	153	205	96	-109	
Lewis and Clark	360	543	446	458	409	360	-49	
Liberty	12	16	6	4	4	2	-2	
Lincoln	168	142	85	102	62	40	-22	
Madison	51	69	25	47	42	35	-7	
McCone	15	18	7	14	6	6	0	
Meagher	21	18	3	3	8	9	1	

County	1-Oct	8-Oct	15-Oct	22-Oct	29-Oct	5-Nov	change from previous week*	Trendline
Mineral	49	43	29	21	15	7	-8	
Missoula	686	809	630	580	469	379	-90	
Musselshell	17	17	21	41	59	18	-41	
Park	52	101	70	149	98	189	91	
Petroleum	0	1	1	1	0	1	1	
Phillips	29	32	65	36	40	22	-18	
Pondera	28	25	27	25	8	8	0	
Powder River	29	23	15	5	5	3	-2	
Powell	36	30	37	55	51	20	-31	
Prairie	4	1	2	3	3	4	1	
Ravalli	211	174	154	139	130	59	-71	
Richland	59	42	48	86	31	61	30	
Roosevelt	9	24	32	40	76	96	20	
Rosebud	62	70	25	39	23	12	-11	
Sanders	94	66	54	42	45	46	1	
Sheridan	10	3	5	6	14	6	-8	
Silver Bow	228	180	131	146	149	130	-19	
Stillwater	24	59	25	42	51	39	-12	
Sweet Grass	22	13	7	14	20	10	-10	
Teton	30	29	41	31	26	18	-8	
Toole	29	22	14	9	16	15	-1	
Treasure	12	3	1	3	5	6	1	
Valley	51	64	55	46	24	28	4	
Wheatland	2	3	4	7	5	4	-1	
Wibaux	8	6	1	2	4	2	-2	
Yellowstone	1114	1227	1126	947	1068	771	-297	
MONTANA	6093	6833	5748	5927	5145	4406	-739	

*Note: Data are based on the date of report into the Montana Infectious Disease Information System (MIDIS). Underlined numbers in the above table reflect adjusted counts and may include cases diagnosed but not reported in earlier time frames. These adjustments result from local and state data reconciliation efforts, conducted to ensure accurate data.

County name	Eligible population 12+	Dose 1	Dose 2	Dose 3	Fully Immunized	Total Doses Administered	Percent eligible with first dose (12+)	Percent Fully Vaccinated (12+)
BEAVERHEAD	8,412	5,025	4,079	380	4,743	9,484	60%	56%
BIG HORN	10,303	7,116	6,055	896	6,377	14,067	69%	62%
BLAINE	5,359	3,252	2,742	574	2,936	6,568	61%	55%
BROADWATER	5,443	2,099	1,525	263	1,749	3,887	39%	32%
CARBON	9,621	5,139	4,497	1,155	4,811	10,791	53%	50%
CARTER	1,051	345	304	29	323	678	33%	31%
CASCADE	68,949	38,541	31,340	6,897	34,941	76,778	56%	51%
CHOUTEAU	4,903	2,002	1,659	608	1,822	4,269	41%	37%
CUSTER	9,855	4,806	3,892	747	4,367	9,445	49%	44%
DANIELS	1,454	691	591	164	641	1,446	48%	44%
DAWSON	7,410	3,218	2,727	368	2,990	6,313	43%	40%
DEER LODGE	8,375	5,839	4,853	1,318	5,413	12,010	70%	65%
FALLON	2,330	968	860	199	900	2,027	42%	39%
FERGUS	9,561	5,006	4,276	730	4,633	10,012	52%	48%
FLATHEAD	88,987	47,058	37,294	8,592	41,201	92,944	53%	46%
GALLATIN	99,225	73,506	57,007	11,555	62,617	142,068	74%	63%
GARFIELD	1,066	304	241	0	283	578	29%	27%
GLACIER	10,794	9,229	6,217	751	6,715	16,197	86%	62%
GOLDEN VALLEY	703	336	285	41	316	662	48%	45%
GRANITE	3,071	1,365	1,081	169	1,186	2,615	44%	39%
HILL	13,256	8,308	6,504	1,884	7,491	16,696	63%	57%
JEFFERSON	10,702	6,117	5,163	1,332	5,547	12,612	57%	52%
JUDITH BASIN	1,747	735	629	94	686	1,458	42%	39%
LAKE	25,868	17,864	14,806	3,212	15,926	35,882	69%	62%
LEWIS & CLARK	59,541	40,250	33,479	9,505	36,166	83,234	68%	61%
LIBERTY	2,022	794	665	253	761	1,712	39%	38%
LINCOLN	17,763	8,631	7,086	1,298	7,708	17,015	49%	43%
MADISON	7,777	4,031	3,271	344	3,672	7,646	52%	47%
MCCONE	1,440	431	403	24	411	858	30%	29%
MEAGHER	1,638	942	817	155	890	1,914	58%	54%
MINERAL	3,889	2,393	1,732	253	2,174	4,378	62%	56%
MISSOULA	104,911	76,196	64,186	16,836	69,887	157,218	73%	67%
MUSSELSHELL	4,097	1,573	1,286	137	1,466	2,996	38%	36%
PARK	14,746	10,156	7,847	1,268	8,710	19,271	69%	59%
PETROLEUM	433	148	131	46	139	325	34%	32%
PHILLIPS	3,331	1,691	1,284	217	1,567	3,192	51%	47%
PONDERA	4,931	3,240	2,474	527	2,825	6,241	66%	57%
POWDER RIVER	1,510	458	376	24	421	858	30%	28%
POWELL	6,230	3,956	2,972	369	3,723	7,297	63%	60%
PRAIRIE	931	431	385	33	404	849	46%	43%
RAVALLI	38,686	22,385	18,188	4,423	20,417	44,996	58%	53%
RICHLAND	8,978	4,018	3,189	418	3,805	7,625	45%	42%
ROOSEVELT	8,436	4,635	3,517	282	4,091	8,434	55%	48%
ROSEBUD	7,211	4,847	3,837	501	4,320	9,185	67%	60%
SANDERS	10,768	4,547	3,945	408	4,186	8,900	42%	39%
SHERIDAN	2,847	1,826	1,593	504	1,719	3,923	64%	60%
SILVER BOW	30,125	21,700	18,668	4,658	19,886	45,026	72%	66%
STILLWATER	8,428	4,001	3,174	700	3,685	7,875	47%	44%
SWEET GRASS	3,273	1,577	1,225	264	1,442	3,066	48%	44%
TETON	5,160	2,827	1,943	448	2,364	5,218	55%	46%
TOOLE	4,055	2,087	1,623	207	1,964	3,917	51%	48%
TREASURE	584	356	260	8	280	624	61%	48%
VALLEY	6,313	3,083	2,446	594	2,845	6,123	49%	45%
WHEATLAND	1,823	723	636	129	675	1,488	40%	37%
WIBAUX	834	310	270	35	277	615	37%	33%
YELLOWSTONE	136,442	83,102	69,562	16,167	75,169	168,831	61%	55%
MONTANA	917,598	566,214	461,097	102,993	506,663	1,130,304	62%	55%