

Weekly COVID-19 Update in Montana (as of 11/12/2021)

This report is a weekly snapshot of COVID-19 activity in Montana. Data are analyzed based on information available as of November 12, 2021. Data are provisional and expected to change as more information is received.

Case Data

Table 1. Summary of COVID-19 Activity – Montana, as of 11/12/2021

	TOTAL	RECENT WEEK	PERCENT CHANGE FROM PREVIOUS WEEK
REPORTED CASES	185,087	4,050	-8%
LABORATORY TESTS	2,088,490	32,631	-20%
HOSPITALIZATIONS	9,549	343	-7%
DEATHS	2,490	67	+16%

Figure 1. COVID-19 Cases and Hospitalizations over Time - Montana, as of 11/12/2021

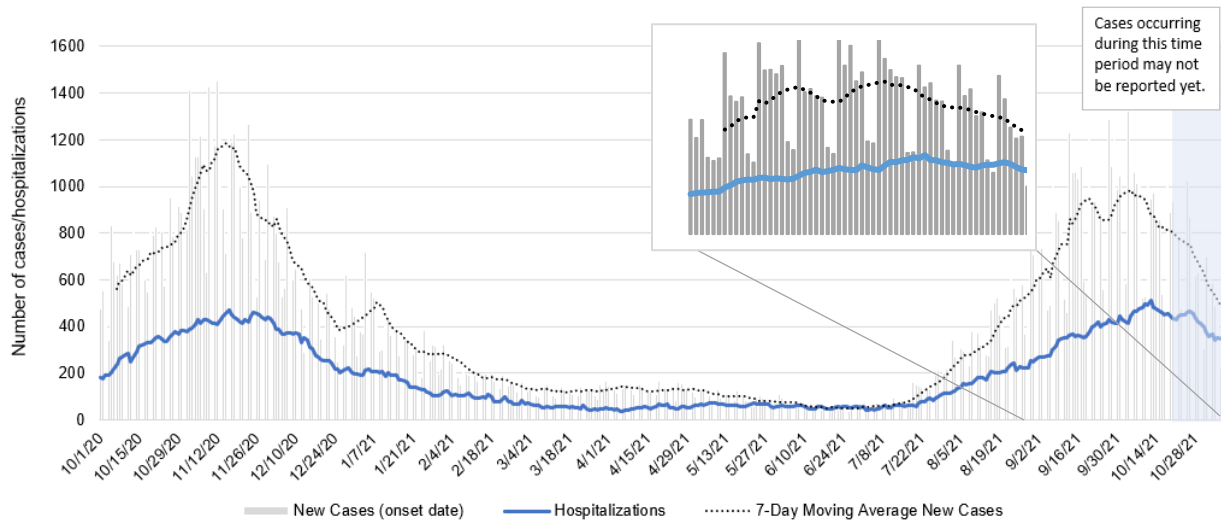
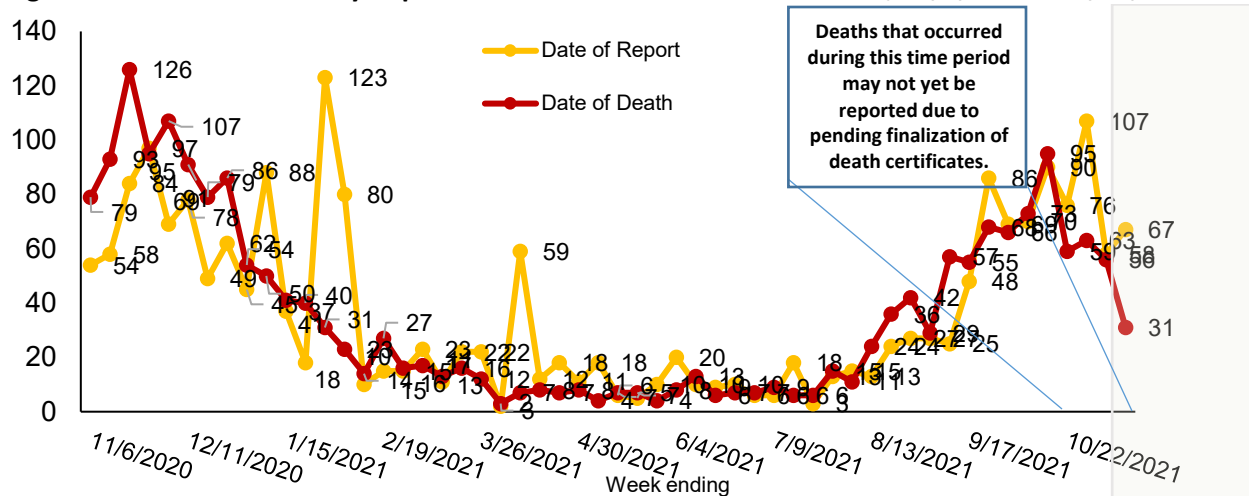


Figure 2. COVID-19 Deaths by Report Date and Date of Death – Montana, 11/1/2020 – 11/12/2021



Vaccine Data

Montana began vaccinating individuals in mid-December 2020 with a phased process: Phase 1A on December 14, 2020, Phase 1B on January 19, 2021, and Phase 1B+ on March 8, 2021. Vaccinations were opened to all Montanans age 16+ on April 1, 2021 and expanded to all Montanans age 12+ on May 10th, 2021. Most recently, the Pfizer vaccine was approved for the 5-11 year old age group on October 29th, 2021. To date, 1,161,437 doses have been given across the state and 50% of the eligible population is considered fully vaccinated.

Table 2: COVID-19 Vaccine Doses Administered for the 12 and older population – Montana, as of 11/12/2021

	NUMBER	PERCENT OF ELIGIBLE POPULATION	WEEK ENDING 10/29	WEEK ENDING 11/5	WEEK ENDING 11/12*
TOTAL DOSES ADMINISTERED	1,158,283		29,839	29,868	21,790
DOSE 1 ADMINISTERED	569,976	61%	4,087	3,558	2,903
FULLY VACCINATED INDIVIDUALS	510,374	55%	3,386	2,964	2,520

*the data for the most recent week are preliminary and are expected to be an underestimate of the doses administered during the week, due to a reporting lag.

Table 3: COVID-19 Vaccine Doses Administered for the 5 and older population – Montana, as of 11/12/2021

	NUMBER	PERCENT OF ELIGIBLE POPULATION	WEEK ENDING 10/29	WEEK ENDING 11/5	WEEK ENDING 11/12*
TOTAL DOSES ADMINISTERED	1,161,437		29,839	29,991	24,821
DOSE 1 ADMINISTERED	573,130	56%	4,087	3,681	5,934
FULLY VACCINATED INDIVIDUALS	510,374	50%	3,386	2,964	2,520

Figure 3. COVID-19 Vaccine Doses Administered by Week, 5+ Years – Montana, as of 11/12/2021

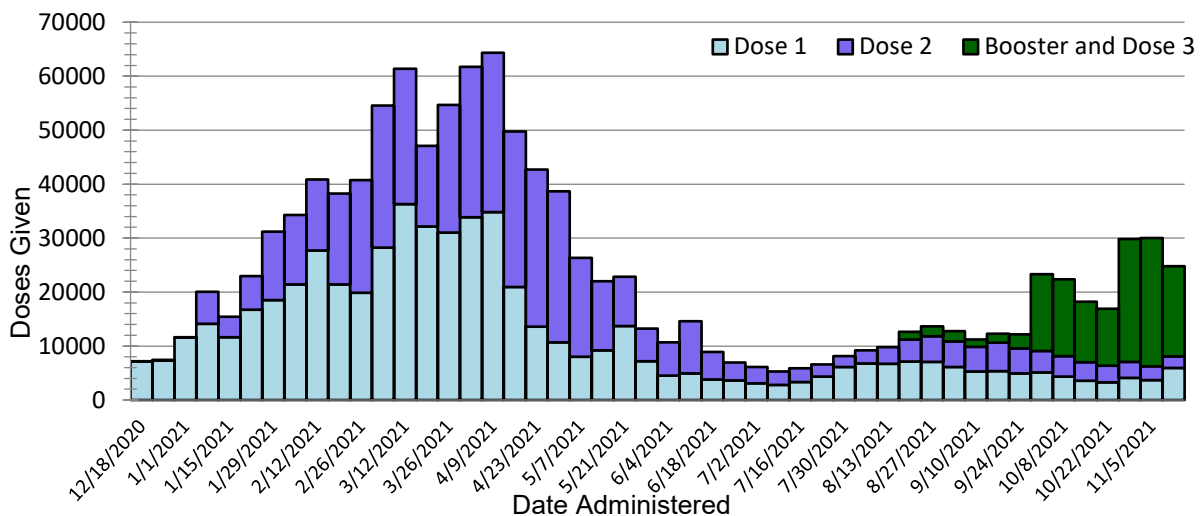
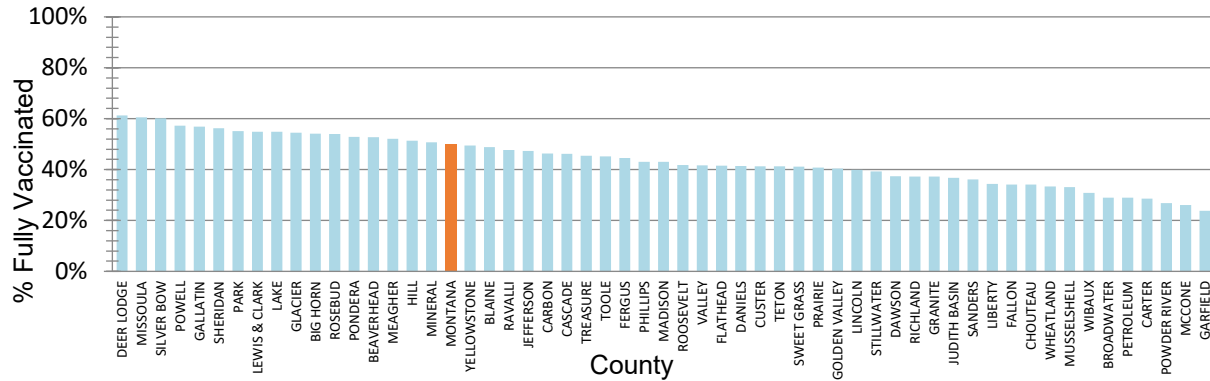


Figure 4. Percent of Eligible Montanans (5+ years) Fully Vaccinated by County – Montana, 11/12/2021



Variant and Breakthrough Cases

Figure 6 displays the percentage of the most common SARS-CoV-2 lineages detected each week, among all samples sequenced that were collected that week. There were 6,620 samples that were sequenced and their lineages were reported to GISAID since September 2020; figure 5 displays the number of specimens sequenced by week. A variant is a lineage that has one or more mutations that differentiate it from other lineages in circulation. Delta is the only Variant of Concern at this time, and it is the dominant circulating strain in Montana. Of specimens collected and sequenced in October and November 1,568/1,571 (99.8%) are Delta. Aside from Delta, all other former variants of concern and interest have been re-classified as Variants Being Monitored. Delta has been the predominant variant in Montana since July 2021.

Figure 5. Number of COVID-19 samples sequenced by collection date, Montana 11/16/2021 [n=6,620]

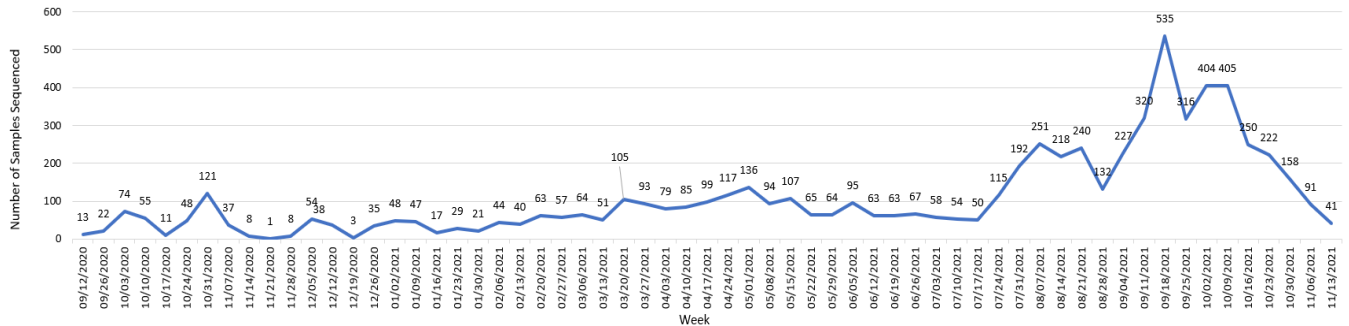
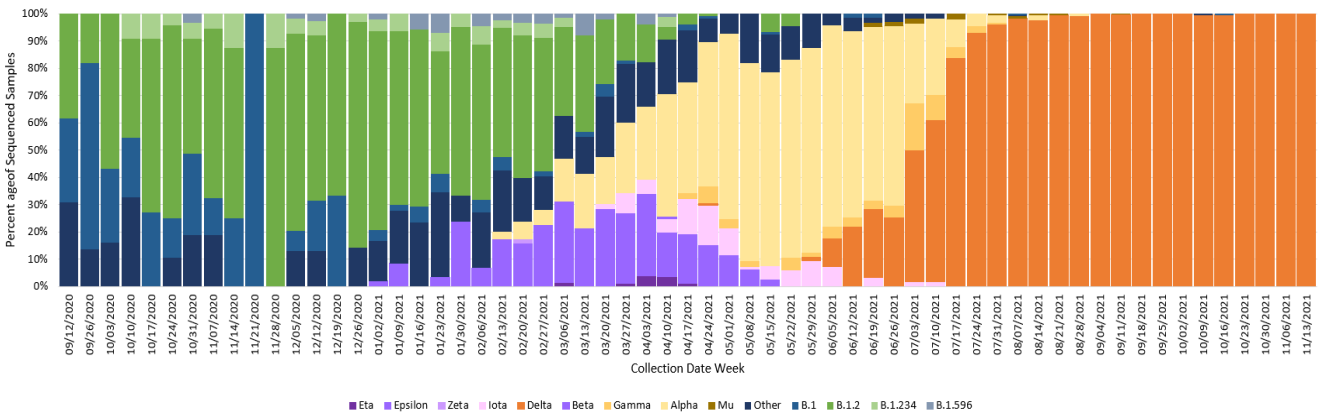


Figure 6. Percent of COVID-19 variants in sequenced samples by collection date, Montana 11/16/2021



A breakthrough COVID-19 infection is defined as a positive SARS-CoV-2 specimen collected ≥ 14 days after completing the primary COVID-19 vaccine series of an FDA-authorized COVID-19 vaccine. Depending on the specific vaccine administered, completion of series could be one or two doses of vaccine. As of 11/16/21, Montana reports 13,533 cases of confirmed breakthrough disease, which includes 786 hospitalizations and 209 deaths. Over the past 8 weeks (September 18 – November 12) the number of cases among unvaccinated individuals was 4.6 times higher than the number of cases among vaccinated individuals; the number of hospitalizations and deaths among unvaccinated individuals were 4.4 and 3.3 times higher, respectively, compared to vaccinated individuals.

Hospitalizations and Deaths and Vaccination Status

COVID-19-related hospitalizations and deaths were analyzed between **April 1 and November 12** to review vaccination status. Since the beginning of April this year, 84% of Montanans who were hospitalized and 77% of those who died were unvaccinated at the time of infection (Table 4). Of the 4,692 individuals who were hospitalized during this time period, 81 (2%) were <18 years old, 722 (15%) were 18 to 44 years old, 1,613 (34%) were 45 to 64 years old and 2,276 (49%) were ≥ 65 years old.

Additionally, COVID-19-related hospitalization and death data from **September 18– November 12** (last 8 weeks) were analyzed to review vaccination status. Eighty-one percent of Montanans who were hospitalized and 76% of those who died had not received a COVID-19 vaccine (Table 5). Of the 2,240 individuals who were hospitalized during this time period, 47 (2%) were <18 years old, 294 (13%) were 18 to 44 years old, 746 (33%) were 45 to 64 years old and 1,153 (51%) were ≥ 65 years old.

Table 4. Vaccination status of COVID-19 hospitalizations and deaths – April 1 to November 12, 2021

	HOSPITALIZATIONS	DEATHS
TOTAL REPORTED	4,692	867
UNVACCINATED	3,922 (84%)	667 (77%)
VACCINATED (BREAKTHROUGH CASE)	770 (16%)	200 (23%)
UNVACCINATED AGE RANGE IN YEARS (MEDIAN AGE)	<1-102 (62)	24-103 (70)
VACCINATED AGE RANGE IN YEARS (MEDIAN AGE)	16-101 (75)	43-99 (83)

Table 5. Vaccination status of COVID-19 hospitalizations and deaths – September 18 – November 12, 2021

	HOSPITALIZATIONS	DEATHS
TOTAL REPORTED	2,240	409
UNVACCINATED	1,810 (81%)	312 (76%)
VACCINATED (BREAKTHROUGH CASE)	430 (19%)	97 (24%)
UNVACCINATED AGE RANGE IN YEARS (MEDIAN AGE)	<1-97 (62)	24-103 (71)
VACCINATED AGE RANGE IN YEARS (MEDIAN AGE)	16-101 (75)	45-99 (83)

Reported COVID-19 Cases by County with Trendline – Montana, past 6 weeks

County	8-Oct	15-Oct	22-Oct	29-Oct	5-Nov	12-Nov	change from previous week*	Trendline
Beaverhead	67	13	52	48	12	21	9	
Big Horn	22	31	45	31	52	142	90	
Blaine	73	140	40	25	63	6	-57	
Broadwater	28	25	25	19	33	26	-7	
Carbon	64	51	76	14	42	58	16	
Carter	1	7	1	1	1	21	20	
Cascade	638	374	668	337	387	572	185	
Chouteau	14	25	16	35	33	8	-25	
Custer	104	88	95	52	71	49	-22	
Daniels	20	12	18	8	2	1	-1	
Dawson	71	60	66	60	65	47	-18	
Deer Lodge	53	34	35	34	18	18	0	
Fallon	3	4	12	26	11	19	8	
Fergus	38	33	106	71	51	61	10	
Flathead	606	502	471	516	403	345	-58	
Gallatin	618	502	650	475	463	427	-36	
Garfield	6	3	7	11	9	10	1	
Glacier	81	83	65	60	65	96	31	
Golden Valley	1	8	6	22	7	4	-3	
Granite	26	21	26	14	8	3	-5	
Hill	119	136	85	68	56	54	-2	
Jefferson	68	50	64	38	48	30	-18	
Judith Basin	4	6	3	8	6	3	-3	
Lake	235	347	153	205	96	138	42	
Lewis and Clark	543	446	458	405	359	285	-74	
Liberty	16	6	4	4	2	3	1	
Lincoln	142	85	101	62	40	44	4	
Madison	69	25	47	42	35	16	-19	
McCone	18	7	14	6	6	12	6	
Meagher	18	3	3	8	9	4	-5	

County	8-Oct	15-Oct	22-Oct	29-Oct	5-Nov	12-Nov	change from previous week*	Trendline
Mineral	43	29	21	15	7	12	5	
Missoula	809	631	580	471	376	309	-67	
Musselshell	17	21	41	58	17	25	8	
Park	101	70	149	98	188	42	-146	
Petroleum	1	1	1	0	1	1	0	
Phillips	32	65	36	40	22	15	-7	
Pondera	25	27	25	9	9	4	-5	
Powder River	23	15	5	5	3	2	-1	
Powell	30	37	55	51	20	22	2	
Prairie	1	2	3	3	4	5	1	
Ravalli	174	153	139	130	58	95	37	
Richland	42	48	86	31	61	30	-31	
Roosevelt	24	32	40	76	96	100	4	
Rosebud	70	25	39	23	12	17	5	
Sanders	66	54	42	45	47	24	-23	
Sheridan	3	5	6	14	6	7	1	
Silver Bow	181	131	146	149	128	85	-43	
Stillwater	59	25	43	51	39	13	-26	
Sweet Grass	13	7	14	20	11	8	-3	
Teton	29	41	31	26	18	16	-2	
Toole	22	14	9	16	15	5	-10	
Treasure	3	1	3	5	6	0	-6	
Valley	64	55	46	24	28	23	-5	
Wheatland	3	4	7	5	4	3	-1	
Wibaux	6	1	2	4	2	2	0	
Yellowstone	1227	1126	947	1068	771	662	-109	
MONTANA	6834	5747	5928	5142	4402	4050	-352	

*Note: Data are based on the date of report into the Montana Infectious Disease Information System (MIDIS). Underlined numbers in the above table reflect adjusted counts and may include cases diagnosed but not reported in earlier time frames. These adjustments result from local and state data reconciliation efforts, conducted to ensure accurate data.

County name	Eligible population 5+	Dose 1	Dose 2	Dose 3	Fully Immunized	Total Doses Administered	Percent eligible with first dose (5+)	Percent Fully Vaccinated (5+)
BEAVERHEAD	9,091	5,081	4,127	613	4,798	9,821	56%	53%
BIG HORN	11,975	7,207	6,158	1,255	6,485	14,620	60%	54%
BLAINE	6,044	3,269	2,755	793	2,951	6,817	54%	49%
BROADWATER	6,092	2,109	1,539	365	1,766	4,013	35%	29%
CARBON	10,476	5,173	4,527	1,236	4,845	10,936	49%	46%
CARTER	1,141	349	306	36	326	691	31%	29%
CASCADE	76,124	38,886	31,549	7,915	35,202	78,350	51%	46%
CHOUTEAU	5,430	2,031	1,685	807	1,853	4,523	37%	34%
CUSTER	10,692	4,903	3,933	1,051	4,416	9,887	46%	41%
DANIELS	1,559	694	595	184	646	1,473	45%	41%
DAWSON	8,071	3,253	2,737	546	3,014	6,536	40%	37%
DEER LODGE	8,887	5,916	4,880	1,606	5,440	12,402	67%	61%
FALLON	2,646	974	863	253	904	2,090	37%	34%
FERGUS	10,495	5,066	4,320	1,121	4,679	10,507	48%	45%
FLATHEAD	99,993	47,363	37,551	10,057	41,494	94,971	47%	41%
GALLATIN	110,900	74,723	57,370	13,912	63,031	146,005	67%	57%
GARFIELD	1,188	305	241	39	283	585	26%	24%
GLACIER	12,447	9,396	6,280	1,253	6,784	16,929	75%	55%
GOLDEN VALLEY	788	342	287	56	318	685	43%	40%
GRANITE	3,218	1,373	1,090	230	1,198	2,693	43%	37%
HILL	14,914	8,562	6,560	2,138	7,659	17,260	57%	51%
JEFFERSON	11,819	6,163	5,199	1,614	5,588	12,976	52%	47%
JUDITH BASIN	1,880	742	633	113	691	1,488	39%	37%
LAKE	29,280	18,071	14,916	3,918	16,046	36,905	62%	55%
LEWIS & CLARK	66,257	40,666	33,649	10,805	36,354	85,120	61%	55%
LIBERTY	2,234	802	673	283	769	1,758	36%	34%
LINCOLN	19,480	8,694	7,141	1,722	7,772	17,557	45%	40%
MADISON	8,589	4,076	3,289	749	3,695	8,114	47%	43%
MCCONE	1,562	431	400	105	408	936	28%	26%
MEAGHER	1,726	958	826	216	900	2,000	56%	52%
MINERAL	4,302	2,404	1,736	286	2,180	4,426	56%	51%
MISSOULA	115,881	77,584	64,456	19,347	70,189	161,387	67%	61%
MUSSELSHELL	4,458	1,583	1,292	189	1,475	3,064	36%	33%
PARK	15,969	10,249	7,927	1,942	8,795	20,118	64%	55%
PETROLEUM	483	153	132	48	140	333	32%	29%
PHILLIPS	3,675	1,702	1,295	300	1,582	3,297	46%	43%
PONDERA	5,389	3,264	2,496	669	2,846	6,429	61%	53%
POWDER RIVER	1,588	464	378	80	425	922	29%	27%
POWELL	6,534	3,971	2,984	484	3,737	7,439	61%	57%
PRAIRIE	994	432	385	43	405	860	43%	41%
RAVALLI	42,972	22,636	18,256	5,421	20,506	46,313	53%	48%
RICHLAND	10,310	4,049	3,217	585	3,847	7,851	39%	37%
ROOSEVELT	9,918	4,708	3,560	603	4,148	8,871	47%	42%
ROSEBUD	8,160	4,911	3,913	827	4,409	9,651	60%	54%
SANDERS	11,641	4,595	3,949	633	4,199	9,177	39%	36%
SHERIDAN	3,075	1,831	1,602	598	1,728	4,031	60%	56%
SILVER BOW	33,267	21,996	18,780	5,493	20,011	46,269	66%	60%
STILLWATER	9,451	4,033	3,193	910	3,709	8,136	43%	39%
SWEET GRASS	3,523	1,591	1,235	442	1,452	3,268	45%	41%
TETON	5,819	2,884	1,978	681	2,400	5,543	50%	41%
TOOLE	4,391	2,094	1,631	237	1,981	3,962	48%	45%
TREASURE	623	384	263	74	283	721	62%	45%
VALLEY	6,931	3,104	2,482	830	2,887	6,416	45%	42%
WHEATLAND	2,035	728	639	138	679	1,505	36%	33%
WIBAUX	898	310	270	36	277	616	35%	31%
YELLOWSTONE	153,378	83,892	70,067	18,225	75,769	172,184	55%	49%
MONTANA	1,020,663	573,130	464,195	124,112	510,374	1,161,437	56%	50%