

October 2022 COVID-19 Update in Montana (as of 10/28/2022)

This report is a summary of COVID-19 activity in Montana in October of 2022. Data from October are analyzed based on information available as of October 28, 2022. Data are provisional and are expected to change as more information is received.

Case Data

Table 1. Summary of COVID-19 Activity – Montana, as of 10/28/2022

	TOTAL	10/1-10/7	10/8-10/14	10/15-10/21	10/22-10/28	FOUR WEEK TOTAL	PERCENT CHANGE FROM PREVIOUS FOUR WEEKS**
REPORTED CASES	314,991	1,005	1,007	822	799	3,633	-29%
HOSPITALIZATIONS*	13,501	74	65	73	69	70	+3%
REPORTED DEATHS	3,574	26	11	3	5	45	+96%

*Weekly hospitalization data reflects the average number of active hospitalizations reported daily.

**Percent change is calculated by comparing data for the four weeks included in this report with the data for the four weeks prior. For example, the percent change in this report reflects the difference in data between 10/1-10/28 and 9/3-9/30.

Figure 1. COVID-19 Cases and Hospitalizations over Time – Montana, as of 10/28/2022

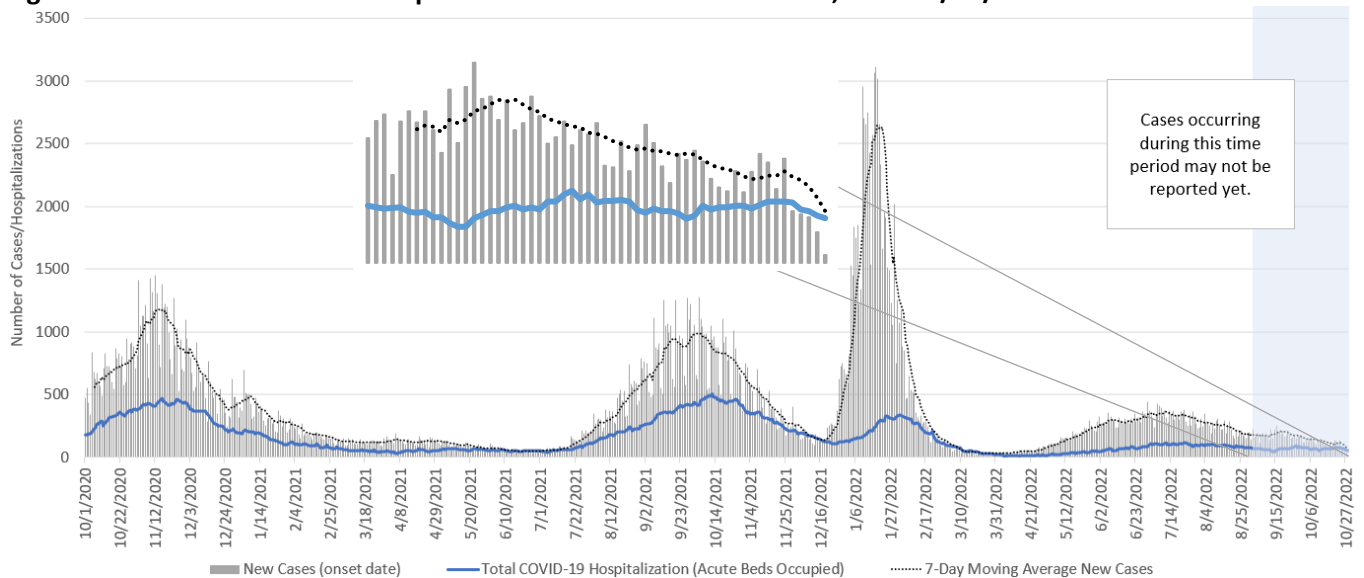


Figure 2. COVID-19 Deaths by Date of Death – Montana, 11/1/2020 – 10/28/2022

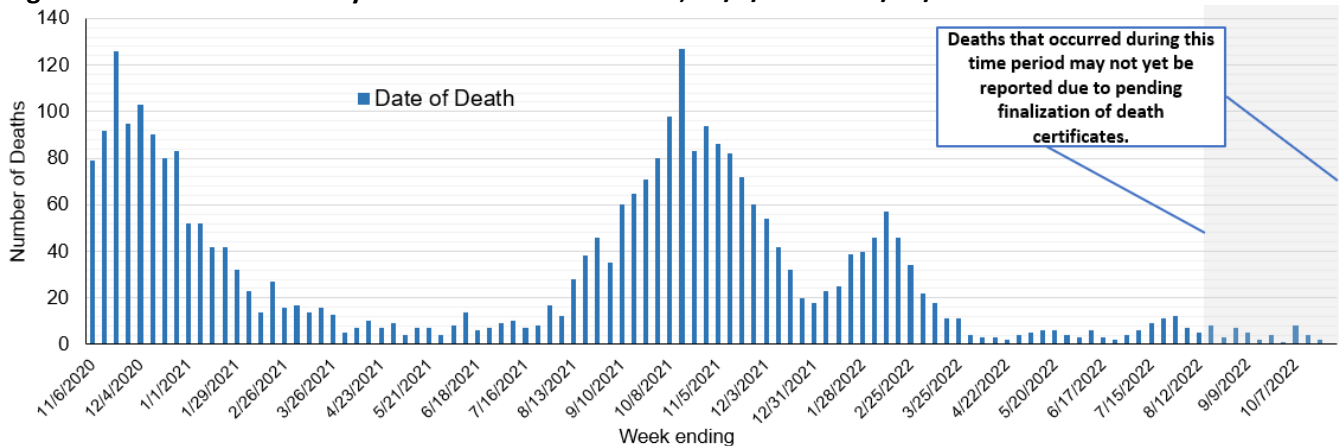
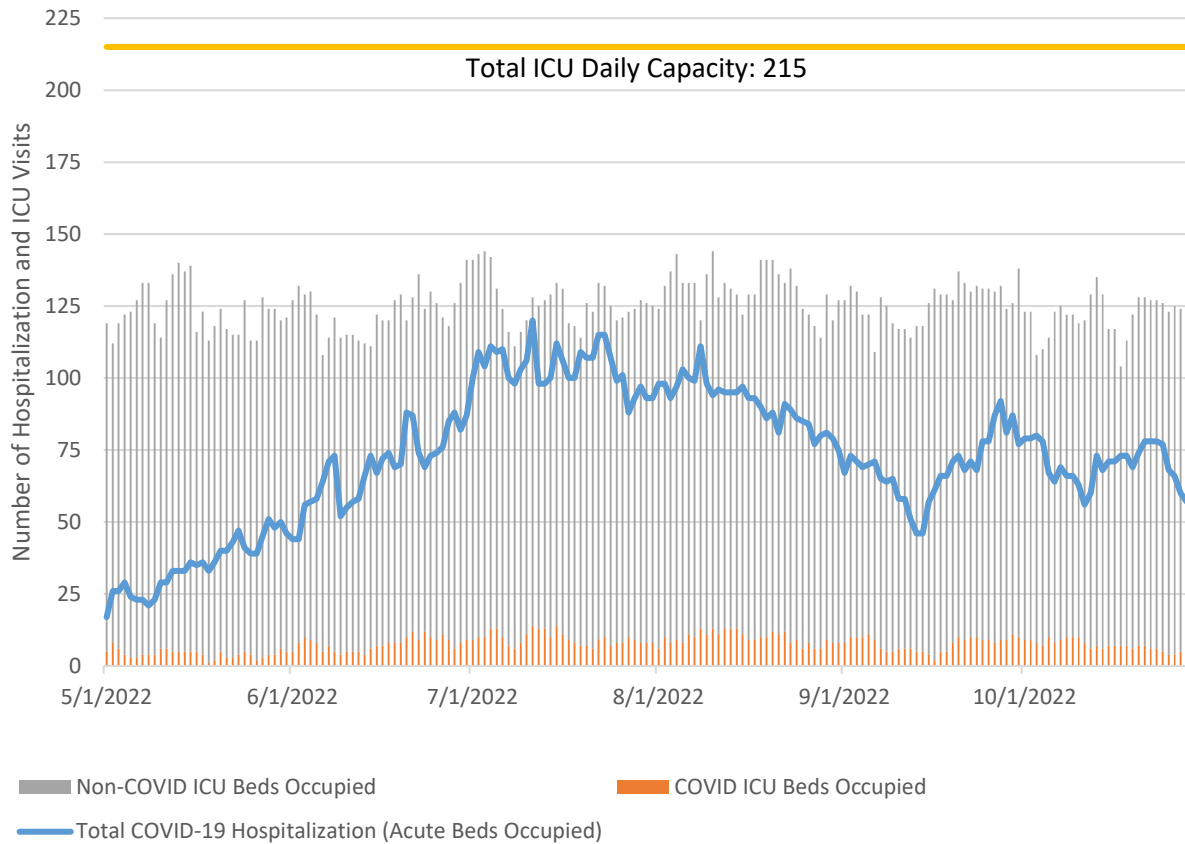


Figure 3: Status of Acute Care and ICU Beds – Hospitals in Montana, May-October 2022



Vaccine Data

Montana began vaccinating individuals in mid-December 2020 with a phased process: Phase 1A on December 14, 2020, Phase 1B on January 19, 2021, and Phase 1B+ on March 8, 2021. Vaccinations were opened to all Montanans age 16+ on April 1, 2021, and expanded to all Montanans age 12+ on May 10th, 2021. The Pfizer vaccine was approved for the 5–11 year-old age group on October 29th, 2021. The Pfizer and Moderna vaccines were approved for all Montanans aged 6 months and older on June 18, 2022. To date, 1,587,274 doses have been given across the state and 52%* of the eligible population has completed their primary COVID-19 vaccine series (table 2). Of the 49,953 COVID vaccine doses administered in September, the vast majority were booster doses.

Table 2: COVID-19 Vaccine Doses Administered, 0+ years-old – Montana, as of 10/28/2022

	TOTAL	10/1-10/7	10/8-10/14	10/15-10/21	10/22-10/28**	FOUR WEEK TOTAL	PERCENT CHANGE FROM PREVIOUS FOUR WEEKS
TOTAL DOSES ADMINISTERED	1,587,274	13,891	13,700	12,528	9,834	49,953	+44%
COMPLETED PRIMARY SERIES	564,566*	204	198	189	182	773	-33%

*Records with an address from a state other than Montana were removed from vaccine coverage assessments. This change resulted in a decrease in the total Montanans who have completed their primary series (table 2) as well as a decrease in the percentage of Montanans considered fully vaccinated.

**The data for the most recent week are preliminary and are expected to be an underestimate of the doses administered during the week, due to a reporting lag.

COVID Variant Information

DPHHS is monitoring variants of the SARS-CoV-2 virus circulating in Montana. Figure 4 displays the number of COVID samples sequenced by week in the past year. Figure 5 displays the percentage of the most common SARS-CoV-2 lineages detected out of all COVID samples sequenced by week. Please note the relatively small number of samples sequenced in recent weeks limits interpretation of the available sequencing data.

Omicron BA.5 (green, below) has been the dominant variant circulating in Montana, since July 2, 2022. Omicron BF.7 was first identified in Montana on October 20, 2022. There were 9 sequences reported to GISAID from positive samples collected and sequenced in October—7 (78%) BA.5, 1 (11%) BA.4, and 1 (11%) BF.7.

Figure 4. Number of COVID-19 samples sequenced by collection date, Montana 10/1/2022

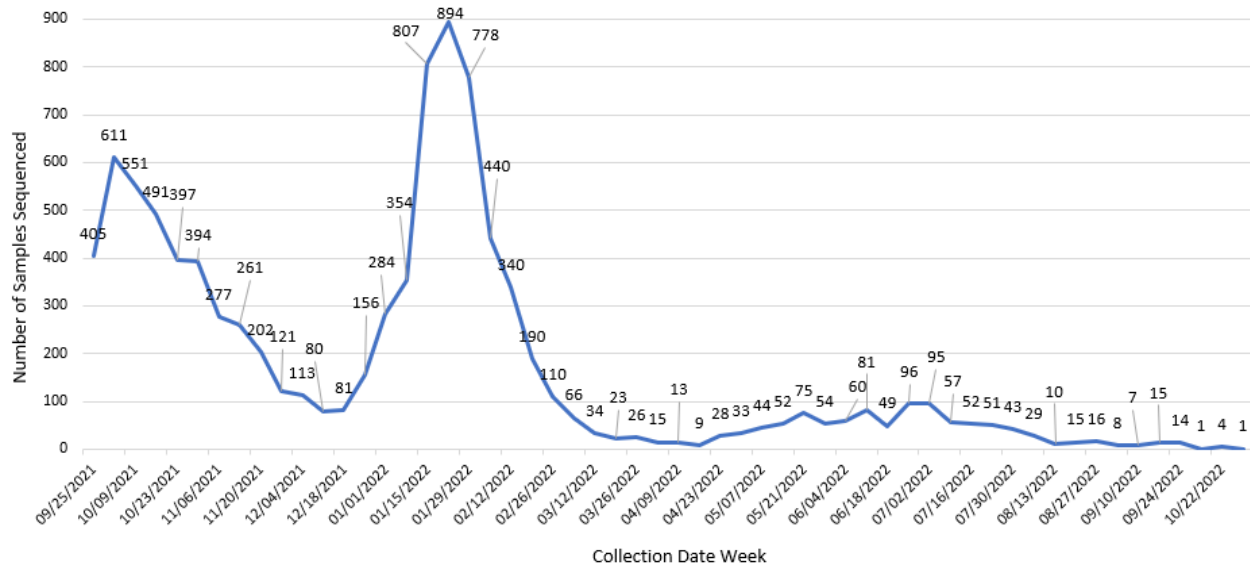
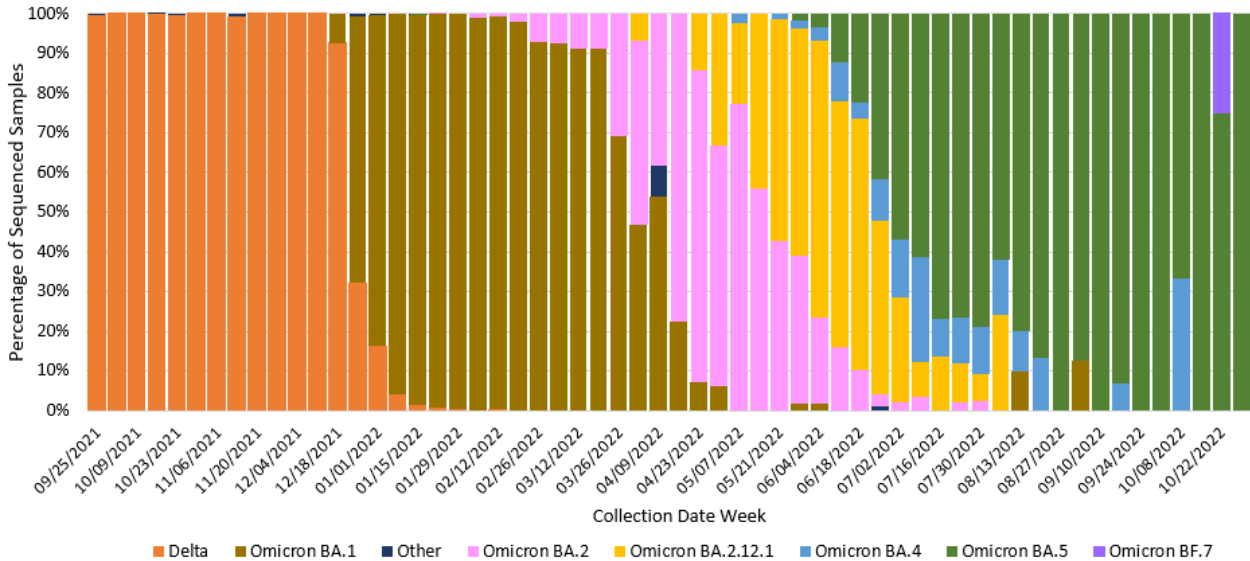


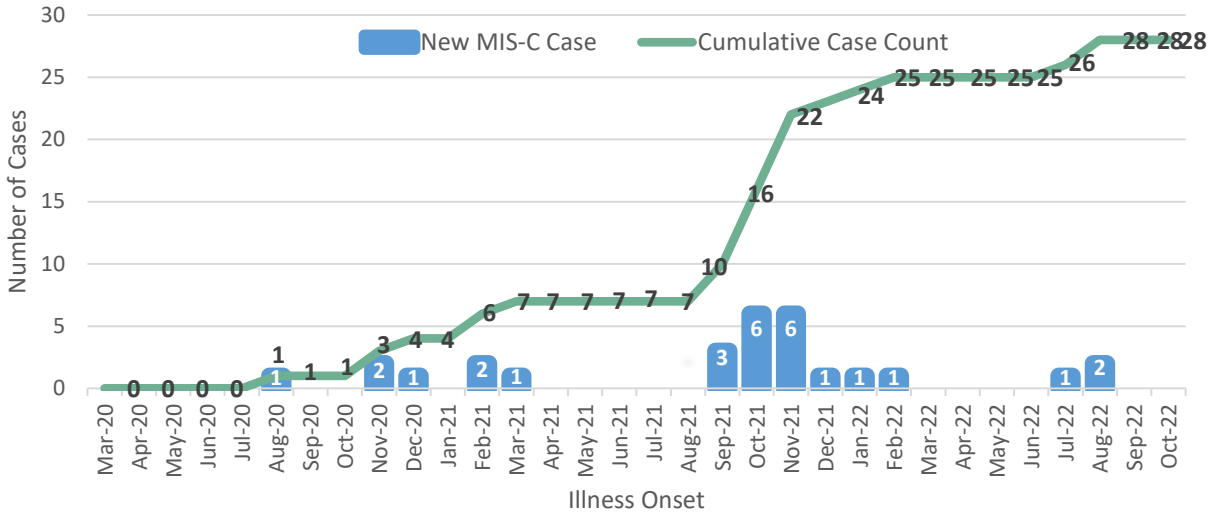
Figure 5. Percent of COVID-19 variants in sequenced samples by collection date, Montana 10/1/2022



Multisystem Inflammatory Syndrome in Children (MIS-C)

As of October 28, 2022, there have been a total of 28 cases of multisystem inflammatory syndrome in children, or MIS-C, reported in Montana. There has been 1 death. Ages range from less than 1 year to 20 years old; median is 7 years. Of the 28 cases, 13 are female and 15 are male. Most cases are non-Hispanic White. Cases are from 14 counties around Montana. The first case of MIS-C was reported in August 2020; 21 of the 28 cases have been reported since September 2021 (Figure 6).

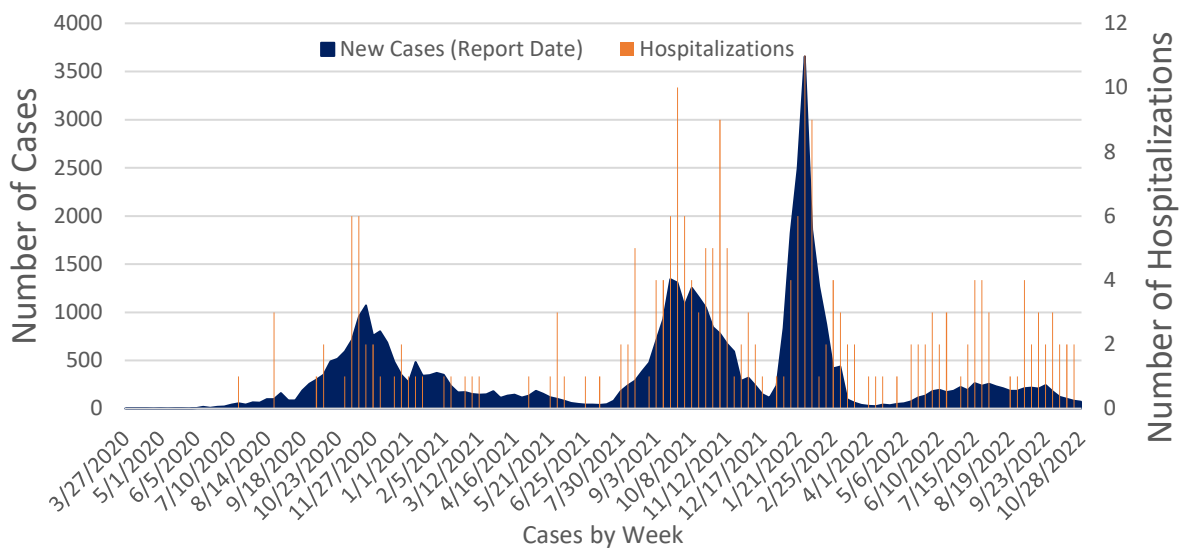
Figure 6. Montana MIS-C Cases by Month of Onset, March 2020 – October 2022



Cases and Hospitalizations Associated with COVID-19 Among Children

To date, there have been 47,581 children <18 years old in Montana diagnosed with COVID-19. Of those, 224 (<1%) have been hospitalized. Case rates among children follow a similar pattern to COVID-19 cases among all age groups (see Figure 1 for comparison) and increased sharply during the recent Omicron surge (Figure 7). There were 377 cases of COVID-19 in children reported between October 1-October 28, 2022, which is a 56% decrease in cases among that age group compared to the four weeks prior. Of the 377 cases, 6 (2%) were hospitalized, which is a 40% decrease in hospitalizations among that age group compared to the four weeks prior.

Figure 7. COVID-19 Cases and Hospitalizations by Week, March 2020 – October 28, 2022, Children <18



Assisted Living Facility and Long-Term Care Facility Cases and Hospitalizations

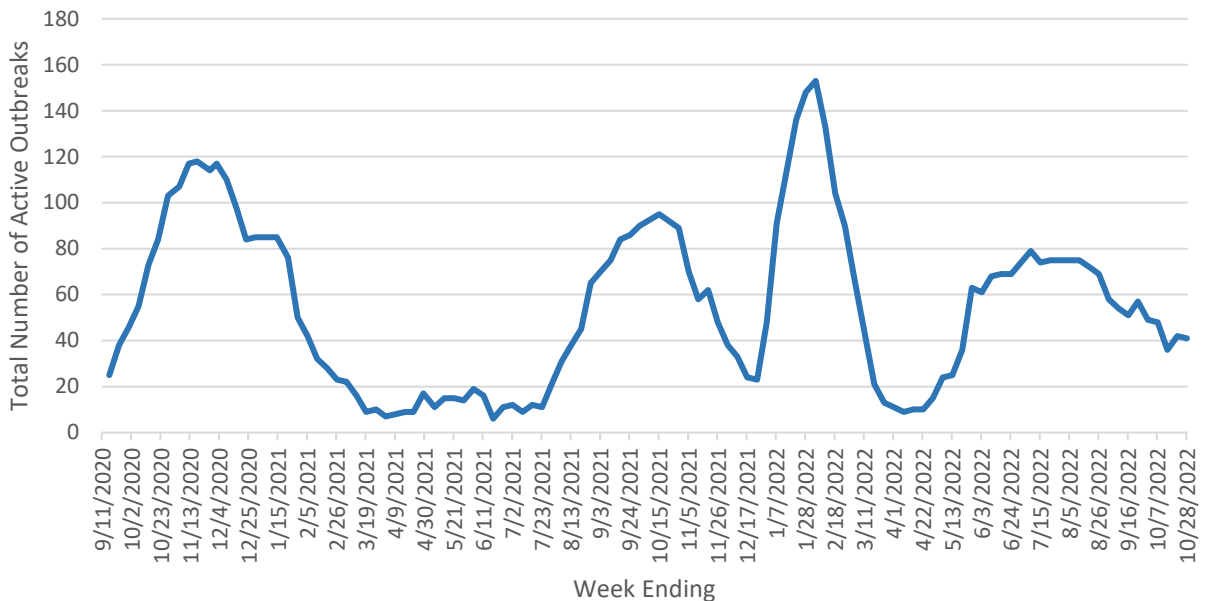
There are 71 long-term care facilities (LTCFs) and 211 assisted living facilities (ALFs) in Montana. As of October 28, 2022, there have been 14,083 cases associated with ALFs and LTCFs since the beginning of the pandemic, which comprises 4% of the total number of COVID-19 cases Montana has reported. There have been 677 COVID-related deaths associated with ALFs and LTCFs in Montana, which accounts for 19% of the COVID-related deaths that Montana has reported since the beginning of the pandemic. Table 3 summarizes recent COVID-19 activity in Montana ALFs and LTCFs.

Facilities that have identified a case of COVID-19 in a resident or staff member within the last 14 days are considered to be actively responding to an outbreak. Figure 8 displays active outbreaks in ALFs and LTCFs in Montana by week.

Table 3. Summary of Recent Montana ALF and LTCF Cases, Deaths, and Outbreaks, October 1-October 28, 2022

	10/1-10/7	10/8-10/14	10/15-10/21	10/22-10/28
REPORTED CASES	86	69	121	102
REPORTED DEATHS	1	1	2	1
ACTIVE OUTBREAKS	48	36	42	41

Figure 8. Montana ALF and LTCF Outbreaks by Week, September 2020-October 2022



Reported COVID-19 Cases by County with Trendline – Montana, past 6 weeks

County	23-Sep	30-Sep	7-Oct	14-Oct	21-Oct	28-Oct	Change from Previous Week	Trendline
Beaverhead	11	5	13	15	6	3	-3	
Big Horn	4	17	16	17	2	16	14	
Blaine	17	15	2	10	4	10	6	
Broadwater	7	3	4	2	4	0	-4	
Carbon	8	4	7	19	8	12	4	
Carter	1	0	1	0	0	0	0	
Cascade	109	78	62	60	50	61	11	
Chouteau	34	18	15	4	1	11	10	
Custer	19	16	7	18	19	15	-4	
Daniels	0	4	1	1	3	0	-3	
Dawson	5	5	18	7	15	13	-2	
Deer Lodge	25	24	8	20	9	22	13	
Fallon	4	1	1	2	5	3	-2	
Fergus	9	3	7	3	2	6	4	
Flathead	133	108	102	90	69	77	8	
Gallatin	206	92	88	146	101	65	-36	
Garfield	0	6	0	1	0	0	0	
Glacier	40	9	21	8	11	14	3	
Golden Valley	0	1	2	1	0	1	1	
Granite	6	4	2	1	5	8	3	
Hill	15	14	19	23	18	21	3	
Jefferson	13	9	12	14	10	5	-5	
Judith Basin	1	0	1	0	3	0	-3	
Lake	67	58	66	44	52	29	-23	
Lewis and Clark	100	108	53	62	58	56	-2	
Liberty	2	11	15	2	4	1	-3	
Lincoln	17	41	24	8	17	16	-1	
Madison	24	11	6	13	7	7	0	
McCone	1	0	1	1	2	1	-1	
Meagher	7	6	3	1	2	1	-1	

County	23-Sep	30-Sep	7-Oct	14-Oct	21-Oct	28-Oct	Change from Previous Week	Trendline
Mineral	2	10	6	13	3	5	2	
Missoula	194	196	148	138	81	82	1	
Musselshell	3	2	10	7	3	2	-1	
Park	23	13	14	22	13	7	-6	
Petroleum	0	0	0	1	0	0	0	
Phillips	0	2	0	1	1	1	0	
Pondera	10	2	3	6	6	7	1	
Powder River	0	0	2	0	0	0	0	
Powell	4	5	8	1	4	1	-3	
Prairie	0	0	0	0	0	0	0	
Ravalli	41	53	25	26	11	25	14	
Richland	5	11	4	4	2	4	2	
Roosevelt	34	24	21	15	4	4	0	
Rosebud	4	9	6	9	5	3	-2	
Sanders	9	9	8	3	2	1	-1	
Sheridan	3	6	3	4	2	0	-2	
Silver Bow	24	31	25	24	20	19	-1	
Stillwater	8	7	3	3	6	2	-4	
Sweet Grass	10	4	1	2	17	4	-13	
Teton	5	10	1	0	2	1	-1	
Toole	2	4	4	2	4	1	-3	
Treasure	0	0	0	1	0	0	0	
Valley	6	10	8	7	5	7	2	
Wheatland	0	2	0	2	0	1	1	
Wibaux	1	0	0	0	0	0	0	
Yellowstone	195	158	128	123	144	148	4	
MONTANA	1468	1239	1005	1007	822	799	-23	

Note: Data are based on the date of report into the Montana Infectious Disease Information System (MIDIS).

Data are preliminary and are subject to change as the MIDIS database is updated with additional case information.

COVID-19 Vaccine Administrations by County, Montana 2020-2022

County name	Total Population	Completed Primary	% Completed Primary	Bivalent Booster	Total Doses
		Series	Series	Doses	Administered
BEAVERHEAD	9,483	5,082	54%	567	13,601
BIG HORN	13,063	7,536	58%	525	19,538
BLAINE	6,568	3,433	52%	267	9,327
BROADWATER	6,444	2,056	32%	206	5,827
CARBON	10,921	5,179	47%	657	14,550
CARTER	1,235	357	29%	20	947
CASCADE	81,346	38,690	48%	4,404	105,409
CHOUTEAU	5,699	2,124	37%	324	6,209
CUSTER	11,292	4,881	43%	547	13,129
DANIELS	1,638	703	43%	114	1,919
DAWSON	8,555	3,239	38%	320	8,835
DEER LODGE	9,204	5,866	64%	845	16,736
FALLON	2,826	984	35%	95	2,622
FERGUS	11,104	5,247	47%	892	15,068
FLATHEAD	105,851	45,748	43%	6,121	129,010
GALLATIN	116,806	69,352	59%	8,505	196,474
GARFIELD	1,268	298	24%	9	704
GLACIER	13,594	8,016	59%	636	22,976
GOLDEN VALLEY	827	369	45%	50	1,000
GRANITE	3,317	1,279	39%	169	3,653
HILL	16,358	9,240	56%	1,275	24,460
JEFFERSON	12,360	6,299	51%	1,003	18,351
JUDITH BASIN	1,994	774	39%	114	2,158
LAKE	30,986	18,188	59%	2,474	51,821
LEWIS & CLARK	70,229	40,295	57%	6,474	119,222
LIBERTY	2,369	829	35%	84	2,268
LINCOLN	20,343	8,453	42%	1,184	24,124
MADISON	8,959	3,965	44%	313	11,144
MCCONE	1,648	430	26%	45	1,218
MEAGHER	1,831	969	53%	111	2,690
MINERAL	4,544	2,429	53%	230	6,482
MISSOULA	121,630	77,096	63%	13,846	222,434
MUSSELSHELL	4,669	1,635	35%	131	4,257
PARK	16,760	9,506	57%	1,352	27,292
PETROLEUM	500	155	31%	9	419
PHILLIPS	3,919	1,794	46%	153	4,683
PONDERA	5,782	3,644	63%	256	9,144
POWDER RIVER	1,681	455	27%	49	1,211
POWELL	6,817	3,985	58%	311	10,259
PRAIRIE	1,067	451	42%	20	1,240
RAVALLI	45,002	22,411	50%	3,499	64,226
RICHLAND	11,043	4,149	38%	345	10,547
ROOSEVELT	10,964	5,799	53%	466	14,642
ROSEBUD	8,836	4,908	56%	443	13,237
SANDERS	12,157	4,548	37%	478	12,932
SHERIDAN	3,261	1,845	57%	364	5,389
SILVER BOW	35,180	21,879	62%	3,681	63,305
STILLWATER	9,888	4,039	41%	539	11,079
SWEET GRASS	3,684	1,545	42%	180	4,215
TETON	6,249	2,707	43%	426	7,480
TOOLE	4,686	2,206	47%	157	5,343
TREASURE	695	319	46%	47	981
VALLEY	7,359	3,288	45%	463	8,964
WHEATLAND	2,157	771	36%	60	2,101
WIBAUX	939	299	32%	26	811
YELLOWSTONE	162,990	82,822	51%	11,321	229,611
MONTANA	1,080,577	564,566	52%	77,202	1,587,274