

November 2022 COVID-19 Update in Montana (as of 11/25/2022)

This report is a summary of COVID-19 activity in Montana in November of 2022. Data from November are analyzed based on information available as of November 25, 2022. Data are provisional and are expected to change as more information is received.

Case Data

Table 1. Summary of COVID-19 Activity – Montana, as of 11/25/2022

	TOTAL	10/29-11/4	11/5-11/11	11/12-11/18	11/19-11/25	FOUR WEEK TOTAL	PERCENT CHANGE FROM PREVIOUS FOUR WEEKS**
REPORTED CASES	318,441	891	734	1,024	830	3,479	-4%
HOSPITALIZATIONS*	13,647	57	55	63	61	59	-16%
REPORTED DEATHS	3,574	3	4	6	10	23	-49%

*Weekly hospitalization data reflects the average number of active hospitalizations reported daily.

**Percent change is calculated by comparing data for the four weeks included in this report with the data for the four weeks prior. For example, the percent change in this report reflects the difference in data between 10/29-11/25 and 10/1-10/28.

Figure 1. COVID-19 Cases and Hospitalizations over Time – Montana, as of 11/25/2022

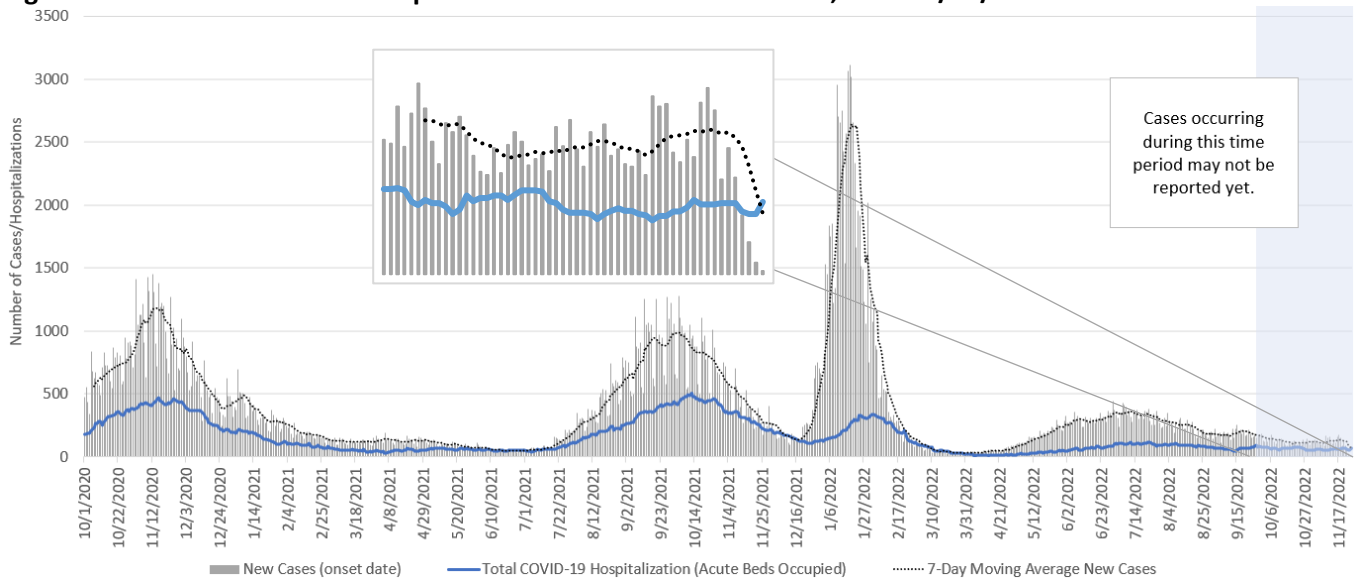


Figure 2. COVID-19 Deaths by Date of Death – Montana, 11/1/2020 – 11/25/2022

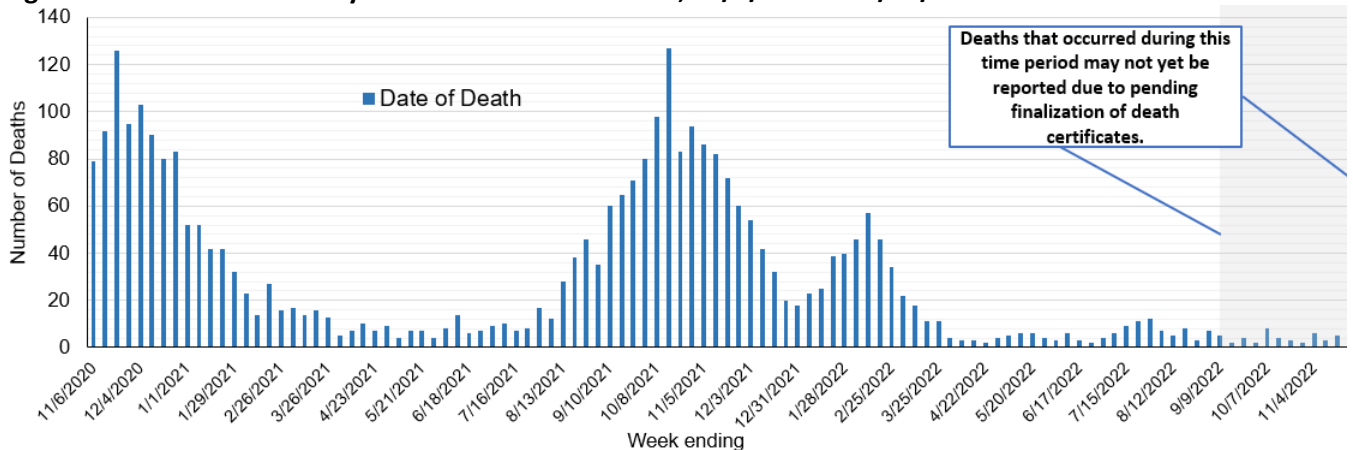
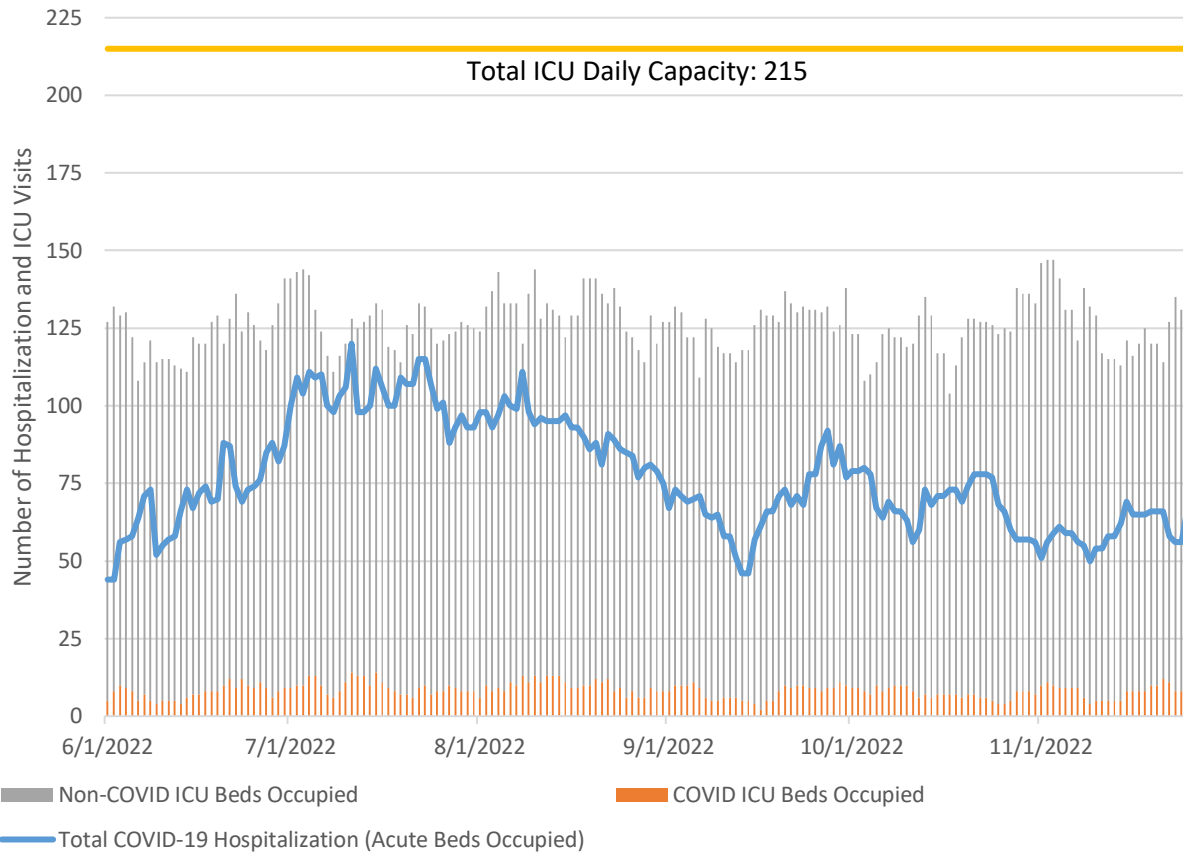


Figure 3: Status of Acute Care and ICU Beds – Hospitals in Montana, June-November 2022



Vaccine Data

Montana began vaccinating individuals in mid-December 2020 with a phased process: Phase 1A on December 14, 2020, Phase 1B on January 19, 2021, and Phase 1B+ on March 8, 2021. Vaccinations were opened to all Montanans age 16+ on April 1, 2021, and expanded to all Montanans age 12+ on May 10th, 2021. The Pfizer vaccine was approved for the 5–11 year-old age group on October 29th, 2021. The Pfizer and Moderna vaccines were approved for all Montanans aged 6 months and older on June 18, 2022. To date, 1,617,993 doses have been given across the state and 52%* of the eligible population has completed their primary COVID-19 vaccine series (table 2). Of the 27,298 COVID vaccine doses administered in November, the vast majority were booster doses.

Table 2: COVID-19 Vaccine Doses Administered, 0+ years-old – Montana, as of 11/25/2022

	TOTAL	10/29- 11/4	11/5- 11/11	11/12- 11/18	11/19- 11/25**	FOUR WEEK TOTAL	PERCENT CHANGE FROM PREVIOUS FOUR WEEKS
TOTAL DOSES ADMINISTERED	1,617,993	9,943	6,678	7,059	3,618	27,298	-50%
COMPLETED PRIMARY SERIES	564,884*	169	148	185	125	627	-22%

*Records with an address from a state other than Montana were removed from vaccine coverage assessments. This change resulted in a decrease in the total Montanans who have completed their primary series (table 2) as well as a decrease in the percentage of Montanans considered fully vaccinated.

**The data for the most recent week are preliminary and are expected to be an underestimate of the doses administered during the week, due to a reporting lag.

COVID Variant Information

DPHHS is monitoring variants of the SARS-CoV-2 virus circulating in Montana. Figure 4 displays the number of COVID samples sequenced by week in the past year. Figure 5 displays the percentage of the most common SARS-CoV-2 lineages detected out of all COVID samples sequenced by week. Please note the relatively small number of samples sequenced in recent weeks limits interpretation of the available sequencing data.

Omicron BA.5 (green, below) has been the dominant variant circulating in Montana, since July 2, 2022. Various sublineages of Omicron BA.5, including BF.7, BQ.1, BQ.1.1, and other BQ sublineages, have been identified in Montana. Omicron BQ.1 was first identified in Montana on November 9, 2022. There were 13 sequences reported to GISAID from positive samples collected and sequenced in November—5 (38%) BA.5, 3 (23%) BQ.1, 1 (8%) BQ.1.1, and 4 (31%) classified as other BQ sublineages.

Figure 4. Number of COVID-19 samples sequenced by collection date, Montana 11/26/2022

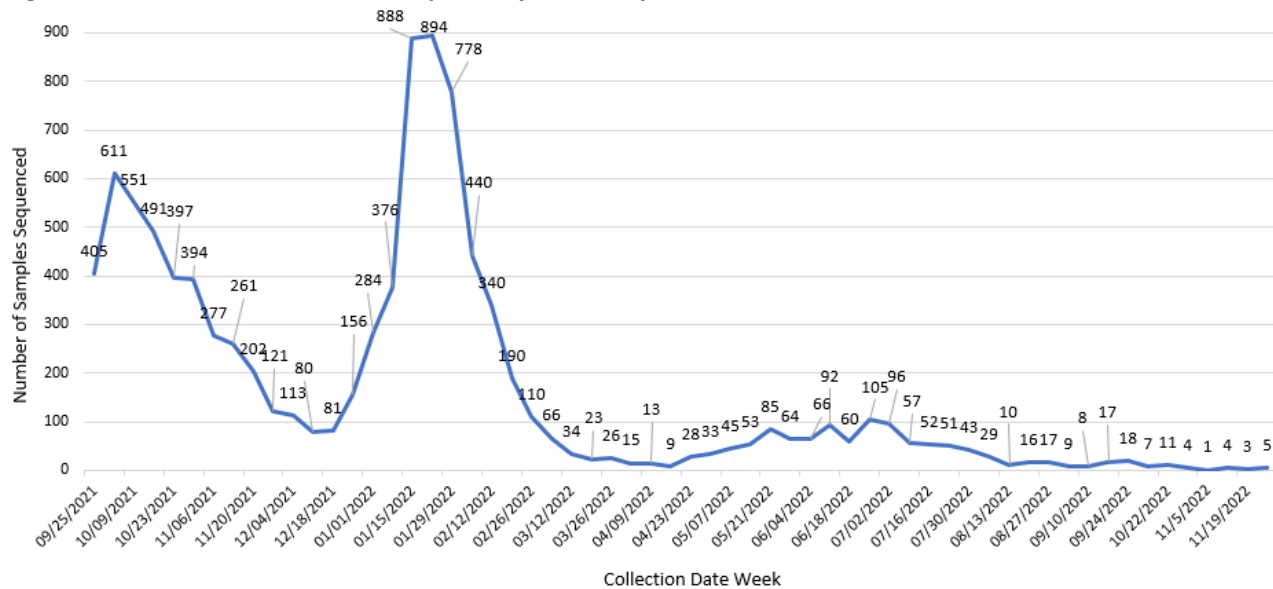
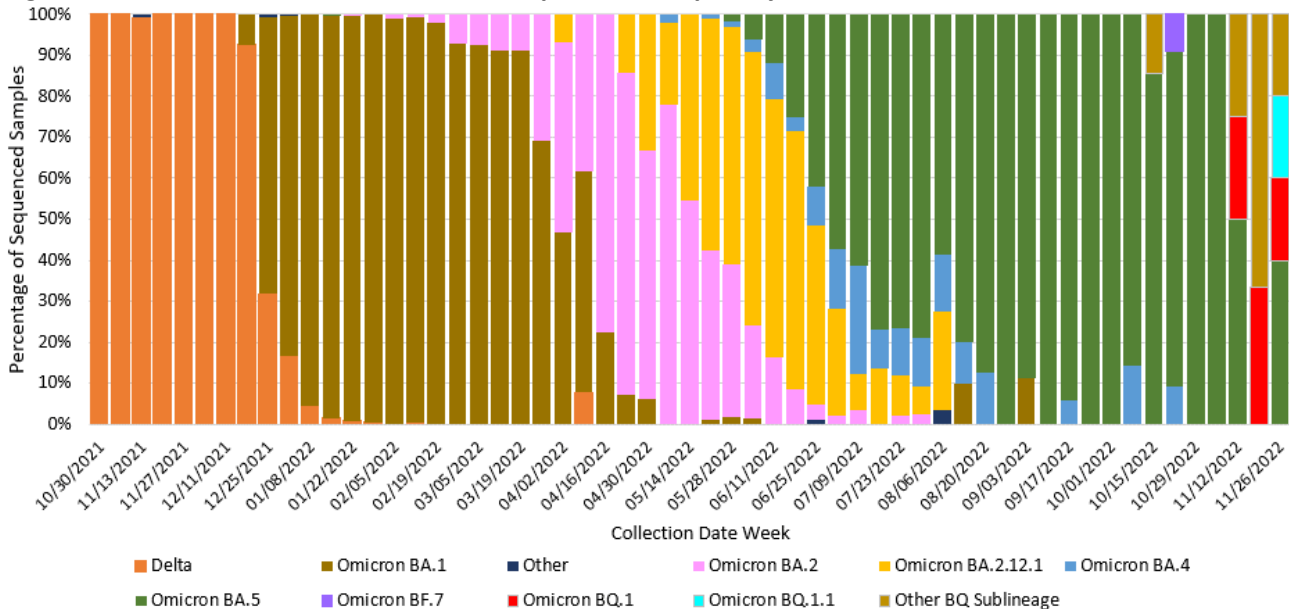


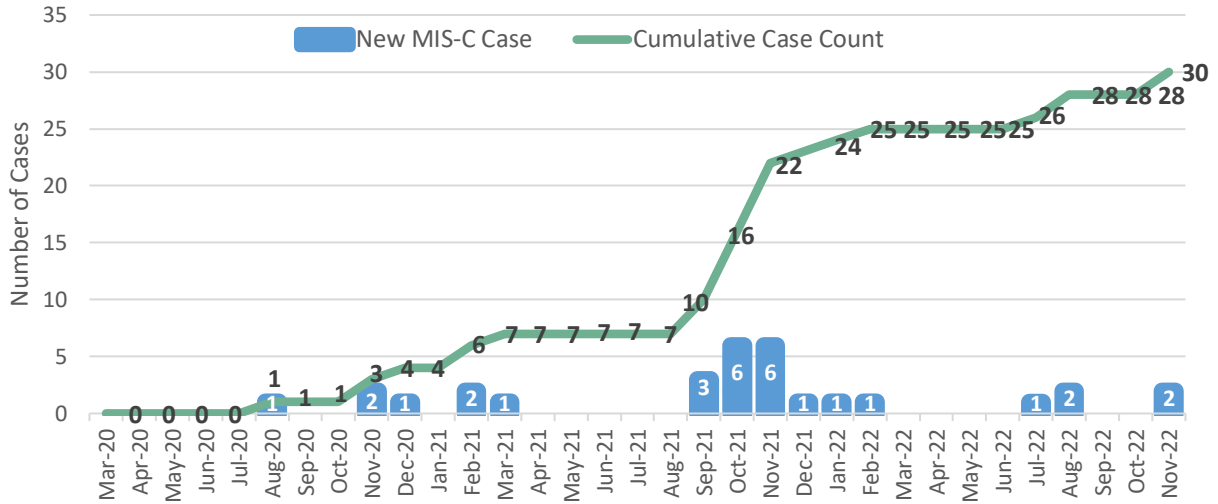
Figure 5. Percent of COVID-19 variants in sequenced samples by collection date, Montana 11/26/2022



Multisystem Inflammatory Syndrome in Children (MIS-C)

As of November 25, 2022, there have been a total of 30 cases of multisystem inflammatory syndrome in children, or MIS-C, reported in Montana (Figure 6). There has been 1 death. Ages range from less than <1 year to 20 years old; median is 8 years. Of the 30 cases, 14 are female and 16 are male. Most cases are non-Hispanic white and no cases were vaccinated against SARS-CoV-2. Cases are from 14 counties around Montana.

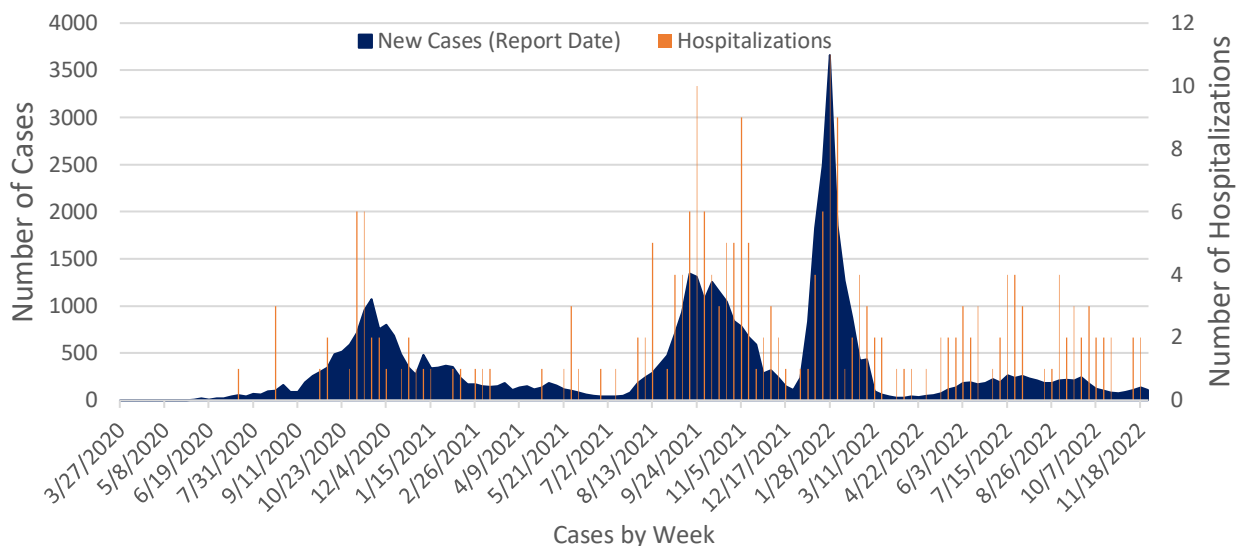
Figure 6. Montana MIS-C Cases by Month of Onset, March 2020 – November 2022



Cases and Hospitalizations Associated with COVID-19 Among Children

To date, there have been 48,016 children <18 years old in Montana diagnosed with COVID-19. Of those, 228 (<1%) have been hospitalized. Case rates among children follow a similar pattern to COVID-19 cases among all age groups (see Figure 1 for comparison) and increased sharply during the recent Omicron surge (Figure 7). There were 439 cases of COVID-19 in children reported between October 29-November 25, 2022, which is a 16% increase in cases among that age group compared to the four weeks prior. Of the 439 cases, 4 (1%) were hospitalized, which is a 33% decrease in hospitalizations among that age group compared to the four weeks prior.

Figure 7. COVID-19 Cases and Hospitalizations by Week, March 2020 – November 25, 2022, Children <18



Assisted Living Facility and Long-Term Care Facility Cases and Hospitalizations

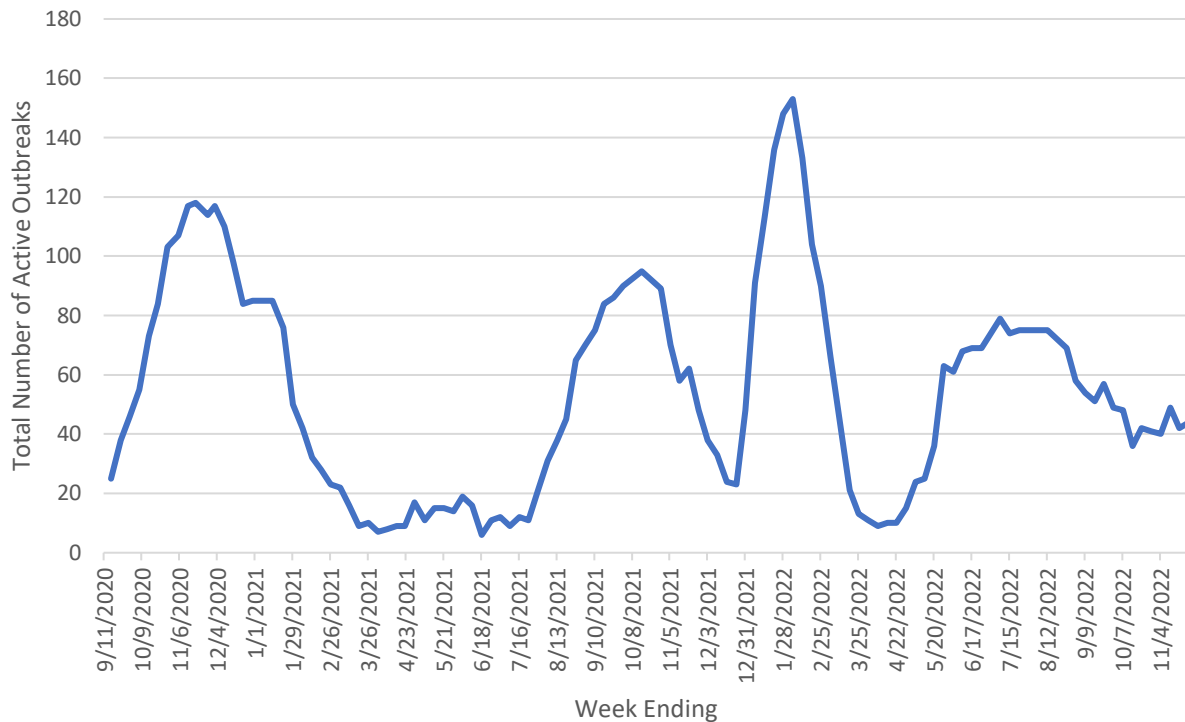
There are 71 long-term care facilities (LTCFs) and 211 assisted living facilities (ALFs) in Montana. As of November 25, 2022, there have been 14,489 cases associated with ALFs and LTCFs since the beginning of the pandemic, which comprises 5% of the total number of COVID-19 cases Montana has reported. There have been 684 COVID-related deaths associated with ALFs and LTCFs in Montana, which accounts for 19% of the COVID-related deaths that Montana has reported since the beginning of the pandemic. Table 3 summarizes recent COVID-19 activity in Montana ALFs and LTCFs.

Facilities that have identified a case of COVID-19 in a resident or staff member within the last 14 days are considered to be actively responding to an outbreak. Figure 8 displays active outbreaks in ALFs and LTCFs in Montana by week.

Table 3. Summary of Recent Montana ALF and LTCF Cases, Deaths, and Outbreaks, October 29-November 25, 2022

	10/29-11/4	11/5-11/11	11/12-11/18	11/19-11/25
REPORTED CASES	71	134	92	109
REPORTED DEATHS	0	3	2	2
ACTIVE OUTBREAKS	40	49	42	44

Figure 8. Montana ALF and LTCF Outbreaks by Week, September 2020-November 2022



Reported COVID-19 Cases by County with Trendline – Montana, past 6 weeks

County	21-Oct	28-Oct	4-Nov	11-Nov	18-Nov	25-Nov	Change from Previous Week	Trendline
Beaverhead	6	3	4	2	4	4	0	
Big Horn	2	16	20	12	19	21	2	
Blaine	4	9	17	12	16	11	-5	
Broadwater	4	0	2	3	3	2	-1	
Carbon	8	11	13	8	14	6	-8	
Carter	0	0	0	0	0	6	6	
Cascade	50	58	79	66	143	105	-38	
Chouteau	1	11	1	3	5	2	-3	
Custer	19	15	11	10	7	12	5	
Daniels	3	0	4	3	1	1	0	
Dawson	15	12	9	15	13	23	10	
Deer Lodge	9	22	16	16	22	16	-6	
Fallon	5	2	3	7	9	11	2	
Fergus	2	6	8	3	5	6	1	
Flathead	69	76	37	38	46	39	-7	
Gallatin	101	66	98	70	111	81	-30	
Garfield	0	0	1	0	0	0	0	
Glacier	11	14	9	9	5	8	3	
Golden Valley	0	1	0	0	0	1	1	
Granite	5	8	3	2	1	1	0	
Hill	18	21	23	17	35	10	-25	
Jefferson	10	5	11	15	5	8	3	
Judith Basin	3	0	0	2	1	2	1	
Lake	53	33	23	23	22	20	-2	
Lewis and Clark	58	56	53	50	54	45	-9	
Liberty	4	1	0	2	1	5	4	
Lincoln	17	16	20	18	22	17	-5	
Madison	7	6	6	1	3	9	6	
McCone	2	1	1	0	0	0	0	
Meagher	2	1	7	3	8	2	-6	

County	21-Oct	28-Oct	4-Nov	11-Nov	18-Nov	25-Nov	Change from Previous Week	Trendline
Mineral	3	5	4	11	14	8	-6	
Missoula	81	82	109	85	67	38	-29	
Musselshell	3	2	4	2	3	3	0	
Park	13	7	15	5	5	9	4	
Petroleum	0	0	1	0	0	0	0	
Phillips	1	1	1	3	0	2	2	
Pondera	6	7	2	6	6	13	7	
Powder River	0	0	0	1	3	3	0	
Powell	4	1	7	7	2	0	-2	
Prairie	0	0	3	0	0	0	0	
Ravalli	11	25	22	16	27	26	-1	
Richland	2	4	2	3	7	7	0	
Roosevelt	4	4	3	4	18	7	-11	
Rosebud	5	3	5	6	15	10	-5	
Sanders	2	1	3	1	5	1	-4	
Sheridan	2	0	0	0	6	3	-3	
Silver Bow	20	19	24	26	68	43	-25	
Stillwater	6	2	3	2	4	2	-2	
Sweet Grass	17	4	0	0	3	1	-2	
Teton	2	1	5	7	8	2	-6	
Toole	4	1	2	4	2	2	0	
Treasure	0	0	1	0	0	0	0	
Valley	5	7	8	3	11	2	-9	
Wheatland	0	1	0	0	1	10	9	
Wibaux	0	0	0	0	1	0	-1	
Yellowstone	143	148	188	132	173	164	-9	
MONTANA	822	795	891	734	1024	830	-194	

Note: Data are based on the date of report into the Montana Infectious Disease Information System (MIDIS).

Data are preliminary and are subject to change as the MIDIS database is updated with additional case information.

COVID-19 Vaccine Administrations by County, Montana 2020-2022

County name	Total Population	Completed Primary Series	% Completed Primary Series	Bivalent Booster Doses	Total Doses Administered
BEAVERHEAD	9,483	5,100	54%	876	13,955
BIG HORN	13,063	7,527	58%	813	19,799
BLAINE	6,568	3,433	52%	333	9,394
BROADWATER	6,444	2,056	32%	290	5,912
CARBON	10,921	5,174	47%	883	14,758
CARTER	1,235	362	29%	39	975
CASCADE	81,346	38,672	48%	6,185	107,215
CHOUTEAU	5,699	2,124	37%	407	6,300
CUSTER	11,292	4,886	43%	850	13,441
DANIELS	1,638	703	43%	154	1,959
DAWSON	8,555	3,243	38%	490	9,012
DEER LODGE	9,204	5,854	64%	1,218	17,063
FALLON	2,826	985	35%	144	2,674
FERGUS	11,104	5,245	47%	1,143	15,310
FLATHEAD	105,851	45,753	43%	8,604	131,628
GALLATIN	116,806	69,177	59%	11,591	199,154
GARFIELD	1,268	298	24%	13	708
GLACIER	13,594	8,047	59%	985	23,393
GOLDEN VALLEY	827	369	45%	62	1,014
GRANITE	3,317	1,274	38%	238	3,716
HILL	16,358	9,285	57%	2,688	26,032
JEFFERSON	12,360	6,304	51%	1,334	18,694
JUDITH BASIN	1,994	777	39%	147	2,197
LAKE	30,986	18,247	59%	3,490	53,026
LEWIS & CLARK	70,229	40,368	57%	8,414	121,424
LIBERTY	2,369	834	35%	155	2,349
LINCOLN	20,343	8,471	42%	1,615	24,602
MADISON	8,959	3,968	44%	429	11,299
MCCONE	1,648	431	26%	75	1,251
MEAGHER	1,831	969	53%	158	2,744
MINERAL	4,544	2,418	53%	437	6,675
MISSOULA	121,630	77,174	63%	18,688	227,479
MUSSELSHELL	4,669	1,642	35%	250	4,395
PARK	16,760	9,492	57%	2,008	27,934
PETROLEUM	500	152	30%	32	433
PHILLIPS	3,919	1,783	45%	236	4,741
PONDERA	5,782	3,629	63%	407	9,244
POWDER RIVER	1,681	457	27%	70	1,237
POWELL	6,817	3,992	59%	470	10,433
PRAIRIE	1,067	449	42%	78	1,294
RAVALLI	45,002	22,460	50%	4,453	65,335
RICHLAND	11,043	4,146	38%	605	10,801
ROOSEVELT	10,964	5,829	53%	673	14,913
ROSEBUD	8,836	4,915	56%	684	13,494
SANDERS	12,157	4,557	37%	733	13,214
SHERIDAN	3,261	1,839	56%	443	5,455
SILVER BOW	35,180	21,910	62%	5,002	64,697
STILLWATER	9,888	4,043	41%	704	11,254
SWEET GRASS	3,684	1,549	42%	287	4,336
TETON	6,249	2,718	43%	556	7,624
TOOLE	4,686	2,198	47%	233	5,401
TREASURE	695	317	46%	48	975
VALLEY	7,359	3,290	45%	604	9,105
WHEATLAND	2,157	773	36%	128	2,171
WIBAUX	939	294	31%	36	810
YELLOWSTONE	162,990	82,922	51%	15,048	233,545
MONTANA	1,080,577	564,884	52%	106,736	1,617,993