

## Comparison of COVID-19 Cases, Hospitalizations, and Deaths, by Selected Demographic Characteristics and Jurisdiction, Montana, March 2020 through December 2021.

This report is a comparison of reported COVID-19 cases, hospitalizations, and deaths among Montana residents by selected demographic characteristics and jurisdiction between 2020 and 2021. Data were analyzed based on information available as of January 12, 2022, from the Montana Infectious Disease Information System. Incidence, hospitalization, and mortality rates were calculated using the Centers for Disease Control and Prevention 2020 bridged-race population estimates.<sup>1</sup> Case hospitalization and case fatality rates per 100 cases were calculated for 2020 and 2021 overall and by age group. The case hospitalization and case fatality rates are the number of hospitalizations and deaths from COVID-19 divided by the number of reported cases multiplied by 100.

### Case Data:

Between March 2020 and December 2021, there were over 198,000 COVID-19 cases reported to the Montana Department of Public Health and Human Services (DPHHS) (Table 1). There were 116,980 cases reported in 2021 and 81,404 cases in 2020, which represents a 44% increase from 2020 to 2021. The percentage increase in cases between 2020 and 2021 was highest among the 0-9 and 10-17 age groups. The number of reported cases increased in every demographic subgroup except among American Indian and Alaska Native (AI/AN) persons, who had a 6% decrease in reported cases between 2020 and 2021.

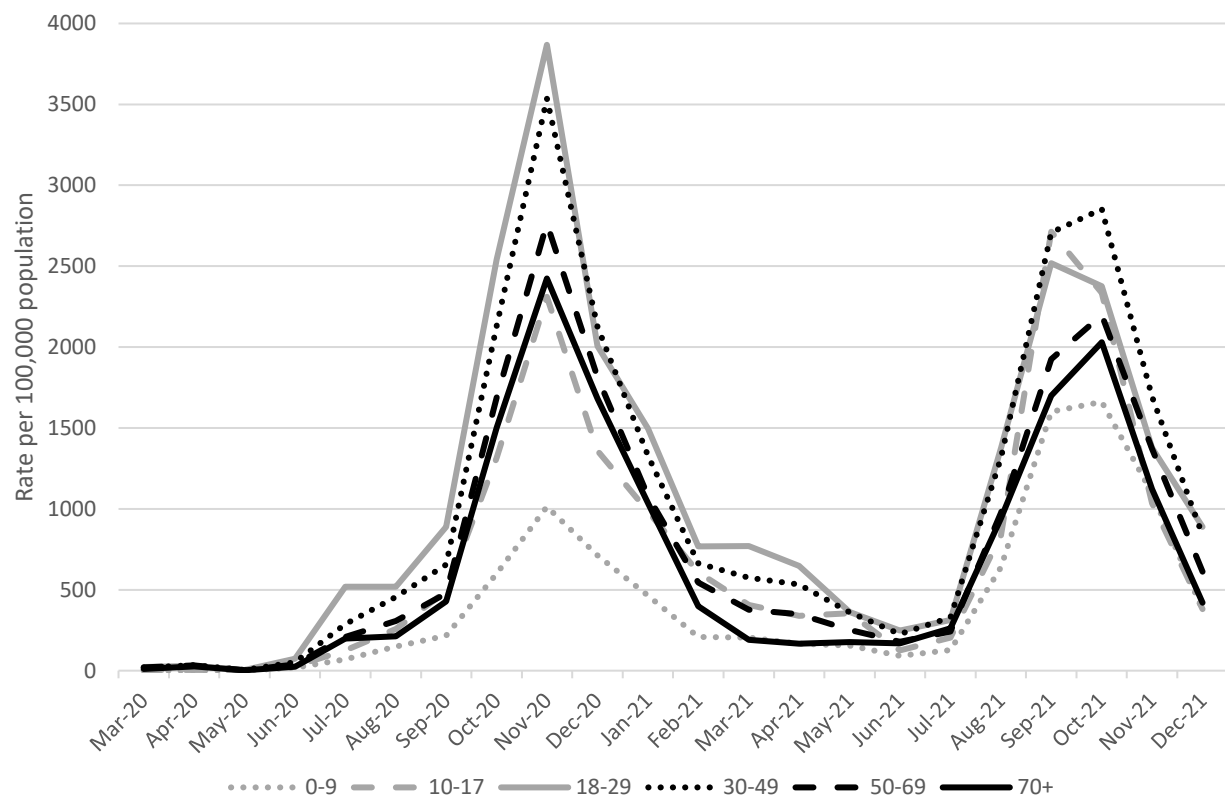
**Table 1. COVID-19 incident cases and rates per 100,000 population by select demographic characteristics, Montana, 2020 and 2021.**

	Year		Total	% change	Rate / 100,000 population*	
	2020	2021			2020	2021
Total	81,404	116,980	198,384	+44	7,533	10,826
Age group (years)						
0-9	3,470	8,472	11,942	+144	2,782	6,791
10-17	6,190	10,833	17,023	+75	5,899	10,323
18-29	17,802	22,341	40,143	+25	10,473	13,143
30-49	24,216	34,940	59,156	+44	9,300	13,419
50-69	20,533	28,220	48,753	+37	7,352	10,104
70+	9,193	12,165	21,358	+32	6,508	8,612
Sex						
Female	42,772	60,285	103,057	+41	7,973	11,237
Male	38,616	55,667	94,283	+44	7,097	10,231
Race						
American Indian/Alaska Native	8,064	7,551	15,615	-6	10,323	9,666
White	53,081	82,850	135,931	+56	5,427	8,470
Other/Unknown	20,259	26,579	46,838	+31	-	-

\*Rates not calculated for category of unknown race because the underlying population (denominator) is unknown.

Figure 1 displays the COVID-19 incidence rates per 100,000 population by age group and month. Beginning in September 2020, the COVID-19 incidence rates increased among all age groups and peaked in November 2020. During Fall 2020, incidence was highest for the 18-29 and 30-49 age groups, followed by the 50-69, 70+ and 10-17 age groups and lowest among the 0-9 age group. In August of 2021, COVID-19 incidence increased again in all age groups and peaked in September and October 2021. The Delta variant was the predominant SARS-CoV-2 variant during this time period. The incidence rates were highest among the 10-17, 18-29, and 30-49 age groups. Notably, the incidence rate among the 0-9 age groups increased in Fall of 2021 during the Delta variant surge compared to the similar time period in 2020. The incidence rate among the 70+ age group decreased in the Fall of 2021 during the Delta variant surge compared to the similar time period in 2020.

**Figure 1. COVID-19 incidence rates per 100,000 population by age group and month, Montana, March 2020 through December 2021.**



### Hospitalization Data:

Between March 2020 and December 2021, there were 10,461 COVID-19 hospitalizations reported to the Montana DPHHS (Table 2). There were 3,895 hospitalizations reported in 2020 and 6,566 hospitalizations in 2021, which represents a 69% increase from 2020 to 2021. The percentage increase in hospitalizations between 2020 and 2021 was highest among the 0-9, 18-29, and 30-49 age groups. The number of reported hospitalizations increased in every demographic subgroup except among American Indian and Alaska Native persons, which had a 26% decrease in reported hospitalizations between 2020 and 2021.

**Table 2. COVID-19 hospitalizations and rates per 100,000 population by select demographic characteristics, Montana, 2020 and 2021.**

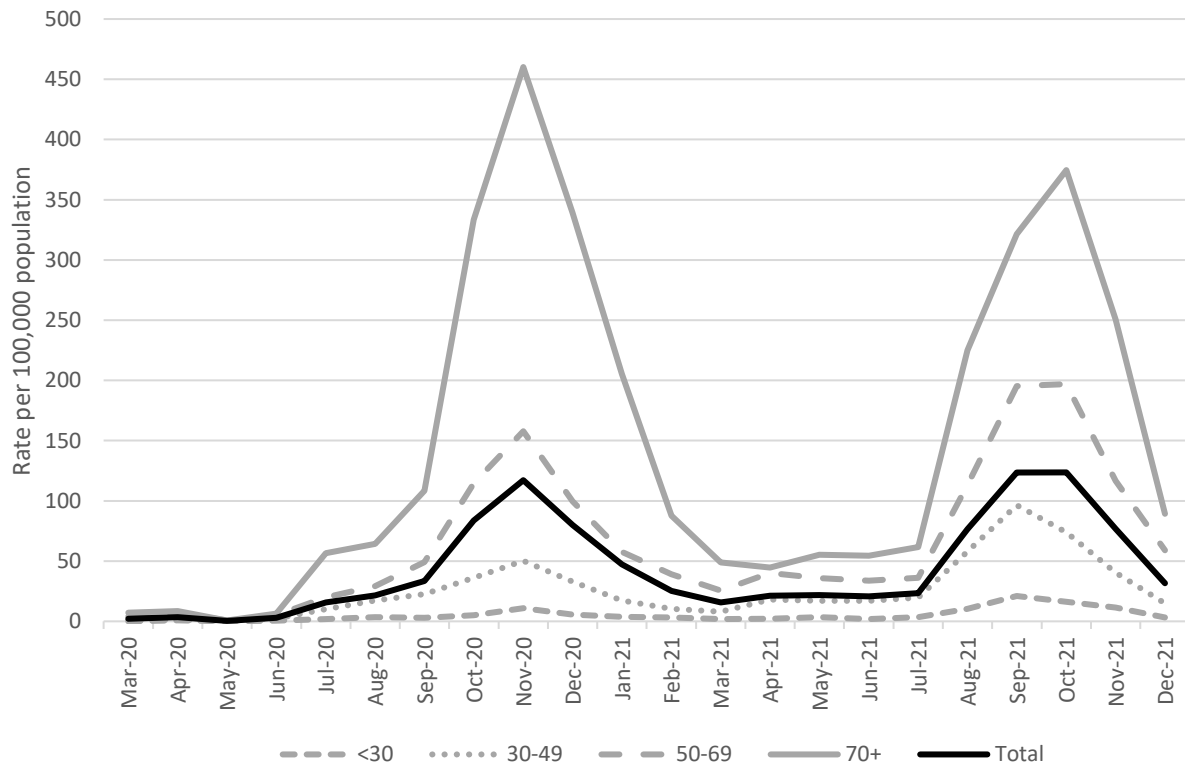
	Year		Total		Rate / 100,000 population	
	2020	2021			2020	2021
Total	3,895	6,566	10,461	+69	360	608
Age group (years)						
0-9	7	58	65	+729	+	46
10-17	21	38	59	+81	20	36
18-29	97	234	331	+141	57	138
30-49	454	1,017	1,471	+124	174	391
50-69	1,360	2,650	4,010	+95	487	949
70+	1,956	2,569	4,525	+31	1,385	1,819
Sex						
Female	1,804	3,126	4,930	+73	336	583
Male	2,091	3,417	5,508	+63	384	628
Race						
American Indian/Alaska Native	537	397	934	-26	687	508
White	2,907	5,267	8,174	+81	297	538
Other/Unknown	451	902	1,353	+100	--	--

+Rates not calculated for categories in which there were less than 20 hospitalizations. Rates not calculated for category of unknown race because the underlying population (denominator) is unknown.

Figure 2 displays the COVID-19 hospitalization rates per 100,000 population by age group and month. Beginning in July 2020, the COVID-19 hospitalization rates increased in the 30-49, 50-69 and 70+ age groups and peaked in November 2020. The hospitalization rates were highest for the 70+ age group, followed by the 50-69, and 30-49 age groups. The hospitalization rates were lowest among the <30 age group. In August 2021, the COVID-19 hospitalization rates increased again in all age groups and peaked in September and October 2021. The hospitalization rates were highest among the 70+ age group, followed by the 50-69, 30-49 and <30 age groups. Notably, the hospitalization rates among 50-69 and 30-49 age groups increased in Fall 2021 compared to the similar time period in 2020; the hospitalization rate of individuals aged 70+ decreased in Fall 2021 compared to the similar time period in 2020.

The overall COVID-19 case hospitalization rate for 2020–2021 was 5.3 hospitalizations per 100 cases. The case hospitalization rate by age group was 0.5, 0.3, 0.8, 2.5, 8.2, and 21.2 per 100 cases for the 0-9, 10-17, 18-29, 30-49, 50-69, and 70+ age groups, respectively.

**Figure 2. COVID-19 hospitalization rates per 100,000 population by age group and month, Montana, March 2020 through December 2021.**



### Death Data:

Between March 2020 and December 2021, there were 2,925 COVID-19 associated deaths reported to the Montana DPHHS (Table 3). There were 1,347 deaths reported in 2020 and 1,578 deaths in 2021, which represents a 17% increase from 2020 to 2021. The percentage increase in deaths between 2020 and 2021 was highest among the 30-49 and 50-69 age groups. The number of reported deaths increased in every demographic subgroup except among persons 70+ years of age (-2%) and among American Indian and Alaska Native persons (-51%) between 2020 and 2021. There were no reported deaths among children and youth aged <18 years.

**Table 3. COVID-19 deaths and mortality rates per 100,000 population by select demographic characteristics, Montana, 2020 and 2021.**

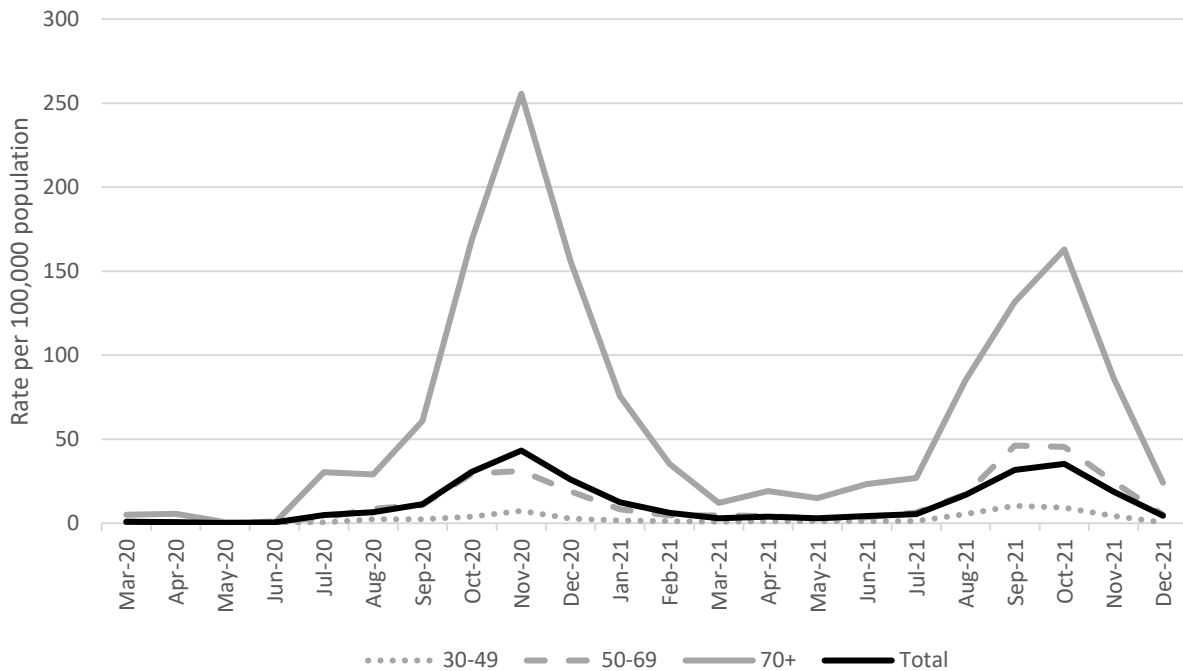
	Year		Total		Rate / 100,000 population	
	2020	2021			2020	2021
Total	1,347	1,578	2,925	+17	125	146
Age group (years)						
0-9	0	0	0	--	--	--
10-17	0	0	0	--	--	--
18-29	1	11	12	--	+	+
30-49	50	98	148	+96	19	38
50-69	291	484	775	+66	104	173
70+	1,005	985	1,990	-2	712	697
Sex						
Female	605	650	1255	+7	113	121
Male	742	921	1663	+24	136	169
Race						
American Indian/Alaska Native	258	126	384	-51	330	161
White	1,028	1,308	2,336	+27	105	134
Other/Unknown	61	144	205	+136	--	--

\*Cells suppressed for categories where there were less than 5 deaths. +Rates not calculated for categories in which there were less than 20 deaths. Rates not calculated for category of unknown race because the underlying population (denominator) is unknown.

Figure 3 displays the COVID-19 mortality rates per 100,000 population by age group and month. Beginning in July 2020, the COVID-19 mortality rates increased among persons  $\geq 30$  years of age and peaked in November 2020. Throughout 2020 and 2021, the mortality rates were highest for the 70+ age group, followed by the 50-69 age group. The mortality rates were lowest among the 30-49 age group. In August 2021, the COVID-19 mortality rates increased again among persons  $\geq 30$  years of age and peaked in September and October 2021. The mortality rates were highest among the 70+ age group, followed by the 50-69, and the 30-49 age groups. Notably, the mortality rates among 30-49 and 50-69 age groups increased in the Fall of 2021 compared to the similar time period in 2020. The mortality rate in individuals aged 70+ decreased in the Fall of 2021 compared to the similar time period in 2020.

The overall COVID-19 case fatality rate for 2020/2021 was 1.5 deaths per 100 cases. The case fatality rate by age group was 0.3, 1.6 and 9.3 per 100 cases for the 30-49, 50-69, and 70+ age groups, respectively.

**Figure 3. COVID-19 mortality rate per 100,000 population by age group and month, Montana, March 2020 through December 2021.**



\*Mortality rates for deaths among persons 18-29 years of age were not calculated because there were less than 20 total deaths from 2020 through 2021.

### **Case, Hospitalizations, and Deaths by Jurisdiction:**

Table 4 (See appendix) displays the reported COVID-19 cases and rates per 100,000 population for 2020 and 2021 by county. The number of reported COVID-19 cases increased in 45 counties and decreased in 12 counties between 2020 and 2021. The counties with the largest percentage increase in cases were Mineral, Sanders, Broadwater, Park and Lake counties.

Table 5 displays the number of COVID-19 hospitalization and rates per 100,000 population for 2020 and 2021 by county. The number of reported COVID-19 hospitalizations increased in 41 counties and decreased in 14 counties between 2020 and 2021. The counties with the largest percentage increase in hospitalizations were Mineral, Lincoln, Powell, Broadwater, and Valley counties.

Table 6 displays the number of COVID-19 associated deaths and rates per 100,000 for 2020 and 2021 by county. The number of reported COVID-19 deaths increased in 27 counties and decreased in 23 counties between 2020 and 2021. The counties with the largest percentage increase in deaths were Powell, Lincoln, Fallon, Madison, and Park counties.

### **Summary of Key Findings:**

- Between March 2020 and December 2021 there were over 198,000 COVID-19 cases, 10,400 hospitalizations, and 2,900 COVID-19 associated deaths among Montana residents.
- From 2020 to 2021, there was an increase in the overall number of COVID-19 cases (+44%), hospitalizations (+69%) and deaths (+17%).
- The number of cases, hospitalizations and deaths increased in every demographic subgroup from 2020 to 2021 except among AI/AN persons where cases, hospitalizations and deaths decreased by 6%, 26%, and 51%, respectively, and among persons 70+ years of age where deaths decreased by 2%.
- COVID-19 incidence rates for the 18-29 and 30-49 age groups were lower in Fall 2021 compared to Fall 2020. However, the incidence rates among persons 0-9 years of age increased in Fall 2021 compared to Fall 2020.
- The hospitalization and mortality rates among the 70+ age group were lower in Fall 2021 compared to Fall 2020. However, the hospitalization and mortality rates increased among the 50-69 and 30-49 age groups in the Fall of 2021 compared to Fall 2020.
- Among persons aged 50-69, for every 100 reported COVID-19 cases, there were 8.2 hospitalizations and 1.6 deaths. Among persons aged 70+, for every 100 reported COVID-19 cases, there were 21.2 hospitalizations and 9.3 deaths.

### **Discussion:**

The increase in COVID-19 cases, hospitalizations, and deaths in 2021 compared to 2020 is likely associated with a number of factors. First, the SARS-CoV-2 Delta variant, which became the dominant variant in July 2021, demonstrated increased transmissibility and disease severity compared to the initial SARS-CoV-2 virus in 2020. Second, the statewide and local mitigation strategies in place throughout 2020 were reduced and implementation of these strategies varied from community to community thereafter. Third, while COVID-19 vaccines became readily available in Montana in 2021, Montana still has suboptimal vaccine coverage among the eligible population. As of February 2022, only 54% of eligible Montanans aged 5 years and older are fully vaccinated and only 61% have received their first dose.<sup>2</sup> Unvaccinated/not fully vaccinated Montanans remain at significantly higher risk for COVID-19 infection, hospitalization, and death compared to fully vaccinated counterparts in 2021.<sup>3</sup>

From March to November 2020, the cumulative incidence and mortality of COVID-19 among AI/AN persons was two to almost four times higher than among white persons.<sup>4</sup> The decrease in the number of COVID-19 cases, hospitalizations, and deaths among AI/AN persons in 2021 compared to 2020 may be attributable to a number of factors. Beginning in 2020, many Tribal communities in Montana implemented and sustained into 2021 multiple mitigation strategies to reduce the spread of COVID-19 in the community and particularly among vulnerable subgroups (e.g., Tribal elders, persons with underlying high-risk conditions).<sup>5</sup> Due to the high morbidity and mortality associated with COVID-19, AI/AN adults were also prioritized as eligible to receive COVID-19 vaccines early in 2021. The ongoing implementation of mitigation strategies in Tribal communities throughout 2021 in combination with increasing vaccination rates may be associated with the reduction in cases, hospitalizations, and deaths among AI/AN persons in 2021.

### Implications:

COVID-19 infection, hospitalization and death are preventable. Being up to date on COVID-19 vaccination, including getting any booster dose(s) when eligible, is the best protection against SARS-CoV-2 infection and the most effective way to prevent severe COVID-19 disease outcomes, including hospitalization and death. The COVID-19 vaccine is widely available to Montanans aged 5 years and older and as of February 2022 over 550,000 Montanans have been fully vaccinated. To locate a vaccine provider, go to [Vaccines.gov](https://vaccines.gov). The COVID-19 vaccines are safe and effective.<sup>6</sup> In addition to staying up to date on COVID-19 vaccines, DPHHS also encourages all Montanans to take precautionary measures to prevent the spread of the virus, including wearing a face covering, when appropriate, avoiding large crowds, staying home when not feeling well, and washing hands frequently, and getting tested for COVID-19 when appropriate.

### References:

1. United States Department of Health and Human Services (US DHHS), Centers for Disease Control and Prevention (CDC), National Center for Health Statistics (NCHS), 2020 Bridged-Race Population Estimates, United States. <http://wonder.cdc.gov/bridged-race-v2020.html>. (Accessed on January 26, 2022).
2. Montana DPHHS. Weekly COVID-19 Update in Montana (as of 2/4/2022). [Weekly COVID-19 Update in Montana \(as of 2/4/2022\) \(mt.gov\)](https://mt.gov/weekly-covid-19-update)
3. Montana DPHHS. COVID-19 cases, hospitalizations, and deaths by vaccination status in Montana, February 7, 2021 — September 4, 2021. September 20, 2021. [COVID-19 cases, hospitalizations, and deaths by vaccination status \(mt.gov\)](https://mt.gov/covid-19-cases-hospitalizations-and-deaths-by-vaccination-status)
4. Williamson LL, Harwell TS, Koch TM, et al. COVID-19 Incidence and Mortality Among American Indian/Alaska Native and White Persons - Montana, March 13-November 30, 2020. MMWR Morb Mortal Wkly Rep. 2021 Apr 9;70(14):510-513. [COVID-19 Incidence and Mortality Among American Indian/Alaska Native and White Persons - Montana, March 13-November 30, 2020 - PubMed \(nih.gov\)](https://pubmed.ncbi.nlm.nih.gov/35444441/)
5. Pratt CQ, Chard AN, LaPine R, et al. Use of Stay-at-Home Orders and Mask Mandates to Control COVID-19 Transmission - Blackfeet Tribal Reservation, Montana, June-December 2020. MMWR Morb Mortal Wkly Rep. 2021 Apr 9;70(14):514-518. [Use of Stay-at-Home Orders and Mask Mandates to Control COVID-19 Transmission - Blackfeet Tribal Reservation, Montana, June-December 2020 - PubMed \(nih.gov\)](https://pubmed.ncbi.nlm.nih.gov/35444441/)
6. Centers for Disease Control and Prevention. MMWR COVID-19 vaccine effectiveness and safety reports. [COVID-19 Vaccine Effectiveness and Safety | MMWR \(cdc.gov\)](https://www.cdc.gov/mmwr/COVID-19-vaccine-effectiveness-and-safety-reports) (Accessed February 13, 2022).



Table 4. COVID-19 incident cases and rates per 100,000 population by County, Montana, March 2020 through December 2021.

County	Year		Total	% change	Rate per 100,000 population	
	2020	2021			2020	2021
BEAVERHEAD	762	846	1,608	11	8,035	8,921
BIG HORN	1,855	1,389	3,244	-25	14,200	10,633
BLAINE	602	853	1,455	42	9,166	12,987
BROADWATER	300	739	1,039	146	4,655	11,468
CARBON	680	931	1,611	37	6,227	8,525
CARTER	137	77	214	-44	11,093	6,235
CASCADE	6,456	10,730	17,186	66	7,936	13,191
CHOUTEAU	216	414	6,30	92	3,790	7,264
CUSTER	974	1,453	2,427	49	8,626	12,868
DANIELS	139	174	313	25	8,486	10,623
DAWSON	939	946	1,885	1	10,976	11,058
DEER LODGE	790	833	1,623	5	8,583	9,050
FALLON	268	292	560	9	9,483	10,333
FERGUS	857	1,068	1,925	25	7,718	9,618
FLATHEAD	8,832	12,708	21,540	44	8,344	12,006
GALLATIN	9,401	14,179	23,580	51	8,048	12,139
GARFIELD	70	96	166	37	5,521	7,571
GLACIER	1,403	1,254	2,657	-11	10,321	9,225
GOLDEN VALLEY	42	81	123	93	5,079	9,794
GRANITE	160	251	411	57	4,824	7,567
HILL	1,811	1,799	3,610	-1	11,071	10,998
JEFFERSON	777	1,175	1,952	51	6,286	9,506
JUDITH BASIN	79	82	161	4	3,962	4,112
LAKE	1,503	3,378	4,881	125	4,851	10,902
LEWIS AND CLARK	4,857	7,878	12,735	62	6,916	11,218
LIBERTY	101	167	268	65	4,263	7,049
LINCOLN	1,091	2,570	3,661	136	5,363	12,633
MADISON	509	937	1,446	84	5,681	10,459
MCCONE	143	169	312	18	8,677	10,255
MEAGHER	111	172	283	55	6,062	9,394
MINERAL	174	592	766	240	3,829	13,028
MISSOULA	6,299	11,916	18,215	89	5,179	9,797
MUSSELSHELL	264	511	775	94	5,654	10,945
PARK	870	1,973	2,843	127	5,191	11,772
PETROLEUM	9	16	25	78	+	3,200
PHILLIPS	431	447	878	4	10,998	11,406
PONDERA	299	402	701	34	5,171	6,953
POWDER RIVER	101	193	294	91	6,008	11,481
POWELL	312	641	953	105	4,577	9,403
PRAIRIE	122	73	195	-40	11,434	6,842
RAVALLI	2,163	3,370	5,533	56	4,806	7,489
RICHLAND	864	1,201	2,065	39	7,824	10,876

Table 4 continued. COVID-19 incident cases and rates per 100,000 population by County, Montana, March 2020 through December 2021.

County	Year		Total	% change	Rate per 100,000 population	
	2020	2021			2020	2021
ROOSEVELT	1,426	977	2,403	-31	13,006	8,911
ROSEBUD	1,179	817	1,996	-31	13,343	9,246
SANDERS	452	1,147	1,599	154	3,718	9,435
SHERIDAN	362	203	565	-44	11,101	6,225
SILVER BOW	2,986	3,410	6,396	14	8,488	9,693
STILLWATER	544	698	1,242	28	5,502	7,059
SWEET GRASS	313	296	609	-5	8,496	8,035
TETON	318	629	947	98	5,089	10,066
TOOLE	431	346	777	-20	9,198	7,384
TREASURE	43	70	113	63	6,187	10,072
VALLEY	607	743	1,350	22	8,248	10,096
WHEATLAND	145	129	274	-11	6,722	5,981
WIBAUX	116	64	180	-45	12,354	6,816
YELLOWSTONE	13,746	18,362	32,108	34	8,434	11,266
TOTAL	81,404	116,980	198,384	44	7,533	10,826

Table 5. COVID-19 hospitalizations and rates per 100,000 population by County, Montana, March 2020 through December 2021.

County	Year		Total	% change	Rate per 100,000 population	
	2020	2021			2020	2021
BEAVERHEAD	38	61	99	61	401	643
BIG HORN	155	76	231	-51	1,187	582
BLAINE	41	33	74	-20	624	502
BROADWATER	19	63	82	232	+	978
CARBON	39	91	130	133	357	833
CARTER	4	1	5	-75	+	+
CASCADE	262	548	810	109	322	674
CHOUTEAU	16	22	38	38	+	386
CUSTER	55	98	153	78	487	868
DANIELS	9	15	24	67	+	+
DAWSON	83	40	123	-52	970	468
DEER LODGE	20	39	59	95	217	424
FALLON	20	25	45	25	708	885
FERGUS	44	97	141	120	396	874
FLATHEAD	292	741	1033	154	276	700
GALLATIN	286	525	811	84	245	449
GARFIELD	7	11	18	57	+	+
GLACIER	84	60	144	-29	618	441
GOLDEN VALLEY	10	14	24	40	+	+
GRANITE	13	13	26	0	+	+
HILL	54	85	139	57	330	520
JEFFERSON	43	48	91	12	348	388
JUDITH BASIN	8	5	13	-38	+	+
LAKE	77	182	259	136	248	587
LEWIS AND CLARK	215	354	569	65	306	504
LIBERTY	9	6	15	-33	+	+
LINCOLN	43	196	239	356	211	963
MADISON	28	62	90	121	313	692
MCCONE	5	13	18	160	+	+
MEAGHER	15	16	31	7	+	+
MINERAL	6	60	66	900	+	1,320
MISSOULA	189	518	707	174	155	426
MUSSELSHELL	29	40	69	38	621	857
PARK	32	92	124	188	191	549
PETROLEUM	2	3	5	50	+	+
PHILLIPS	39	38	77	-3	995	970
PONDERA	7	21	28	200	+	363
POWDER RIVER	10	12	22	20	+	+
POWELL	18	65	83	261	+	953
PRAIRIE	5	2	7	-60	+	+
RAVALLI	79	106	185	34	176	236
RICHLAND	70	110	180	57	634	996

Table 5 continued. COVID-19 hospitalizations and rates per 100,000 population by County, Montana, March 2020 through December 2021.

County	Year		Total	% change	Rate per 100,000 population	
	2020	2021			2020	2021
ROOSEVELT	62	55	117	-11	565	502
ROSEBUD	82	56	138	-32	928	634
SANDERS	35	85	120	143	288	699
SHERIDAN	24	16	40	-33	736	491
SILVER BOW	87	111	198	28	247	316
STILLWATER	36	49	85	36	364	496
SWEET GRASS	21	18	39	-14	570	+
TETON	23	46	69	100	368	736
TOOLE	20	28	48	40	427	598
TREASURE	4	1	5	-75	+	+
VALLEY	15	49	64	227	+	666
WHEATLAND	12	18	30	50	+	+
WIBAUX	8	9	17	13	+	+
YELLOWSTONE	972	1,415	2387	46	596	868
TOTAL	3,895	6,566	10,461	69	360	608

+Rates not calculated for categories in which there were less than 20 hospitalizations.

Table 6. COVID-19 deaths and rates per 100,000 population by County, Montana, March 2020 through December 2021.

County	Year		Total	% change	Rate per 100,000 population	
	2020	2021			2020	2021
BEAVERHEAD	10	14	24	40	+	+
BIG HORN	59	21	80	-64	452	161
BLAINE	23	5	28	-78	350	+
BROADWATER	4	13	17	225	+	+
CARBON	12	11	23	-8	+	+
CARTER	5	0	5	-100	+	+
CASCADE	154	129	283	-16	189	159
CHOUTEAU	5	4	9	-20	+	+
CUSTER	14	27	41	93	+	239
DANIELS	5	4	9	-20	+	+
DAWSON	30	22	52	-27	351	257
DEER LODGE	7	16	23	129	+	+
FALLON	2	8	10	300	+	+
FERGUS	24	28	52	17	216	252
FLATHEAD	81	146	227	80	77	138
GALLATIN	49	57	106	16	42	49
GARFIELD	2	1	3	-50	+	+
GLACIER	39	25	64	-36	287	184
GOLDEN VALLEY	2	3	5	50	+	+
GRANITE	2	4	6	100	+	+
HILL	42	29	71	-31	257	177
JEFFERSON	6	16	22	167	+	+
JUDITH BASIN	1	0	1	-100	+	+
LAKE	26	62	88	138	84	200
LEWIS AND CLARK	71	85	156	20	101	121
LIBERTY	1	1	2	0	+	+
LINCOLN	12	62	74	417	+	305
MADISON	4	16	20	300	+	+
MCCONE	0	8	8	-	+	+
MEAGHER	7	2	9	-71	+	+
MINERAL	0	14	14	-	+	+
MISSOULA	78	112	190	44	64	92
MUSSELSHELL	10	16	26	60	+	+
PARK	7	25	32	257	+	149
PETROLEUM	1	0	1	-	200	0
PHILLIPS	15	12	27	-20	+	+
PONDERA	3	2	5	-33	+	+
POWDER RIVER	6	4	10	-33	+	+
POWELL	2	18	20	800	+	+
PRAIRIE	2	0	2	-100	+	+
RAVALLI	38	92	130	142	84	204
RICHLAND	13	17	30	31	+	+

Table 6 continued . COVID-19 deaths and rates per 100,000 population by County, Montana, March 2020 through December 2021.

County	Year		Total	% change	Rate per 100,000 population	
	2020	2021			2020	2021
ROOSEVELT	53	20	73	-62	483	182
ROSEBUD	42	23	65	-45	475	260
SANDERS	10	29	39	190	+	239
SHERIDAN	5	5	10	0	+	+
SILVER BOW	68	51	119	-25	193	145
STILLWATER	12	17	29	42	+	+
SWEET GRASS	6	2	8	-67	+	+
TETON	5	14	19	180	+	+
TOOLE	10	10	20	0	+	+
TREASURE	1	0	1	-100	+	+
VALLEY	14	16	30	14	+	+
WHEATLAND	6	7	13	17	+	+
WIBAUX	5	3	8	-40	+	+
YELLOWSTONE	227	248	475	9	139	152
TOTAL	1347	1578	2925	17	125	146

+Rates not calculated for categories in which there were less than 20 deaths.