

Tick Photo Do's and Don'ts

Please follow the photo guidelines below to ensure your tick photo meets requirements for identification by our staff.



Photographing the tick against a solid white (or light colored) background works best. Including a ruler or object with a standardized size like a coin can help us identify your tick.



Photos where the important features are shadowed or not visible are very difficult to work with. Photos where the tick is still attached to a person or pet are not useful, as many important features will be hidden from view. Remove the tick from the person or pet before photographing it.

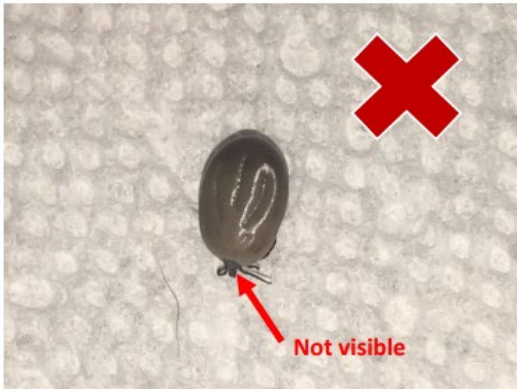
Tick Photo Do's and Don'ts



We always do our best to identify ticks from the photos supplied, however sometimes photos just don't have enough detail. Out of focus images, poorly lit photos, or pictures taken from too far away are very difficult to work with.



This tick is missing its head, but that's okay! Having an intact tick is ideal, but we were still able to identify this tick based on a clear photo of the remaining features and information from the citizen on its date and place of collection.



If the tick is engorged, the most helpful features for identification are the head and shield-like plate behind the head. You may need to lower the camera angle in order to best capture that area.