

2016-17 MONTANA INFLUENZA SEASON SUMMARY



The 2016–17 influenza season was considered to be moderate in the U.S. and Montana. Flu activity began in mid-December and peaked in late January. The predominant strain was Influenza type A H3.

7,935
cases
reported

829
hospitalized

56
deaths

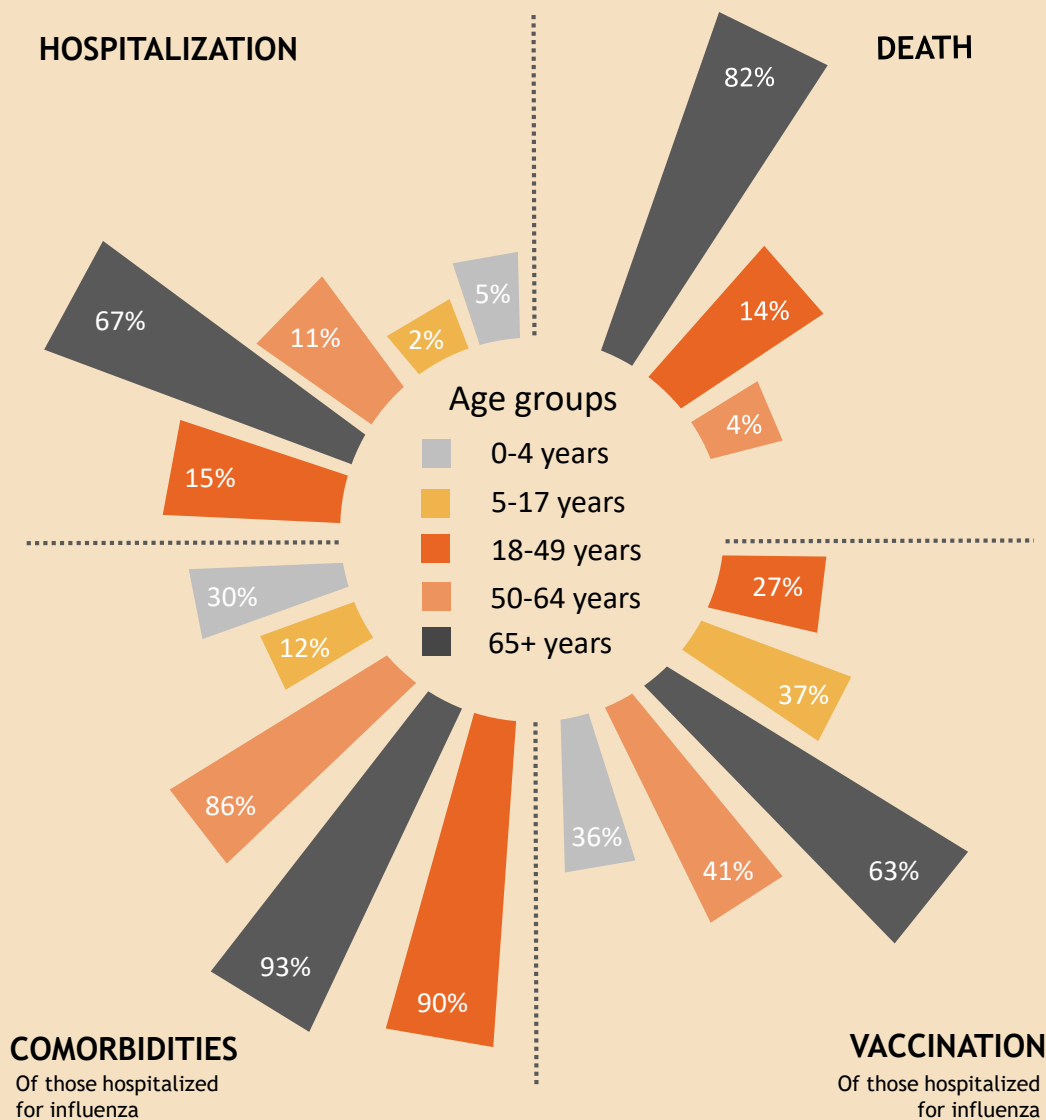
Includes reports and death records where influenza is indicated as the leading or contributing cause of death.

20
outbreaks

Settings included:

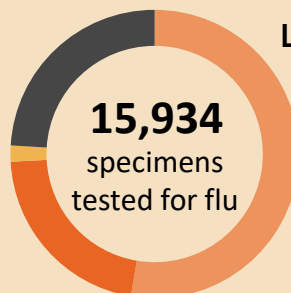
- Long term care facilities
- Assisted living facilities
- Schools
- Correctional facilities

SEASON STATS BY AGE GROUP



MOST COMMON COMORBIDITIES

- Cardiovascular disease
- Chronic lung conditions
- Metabolic disorders



LABORATORY TESTING

- A not typed
- A H3
- A H1N1
- B