

MEASLES

What you should know



MONTANA
COMMUNICABLE
DISEASE EPIDEMIOLOGY

Measles symptoms begin 7-21 days following an exposure. They include:

FEVER

RED EYES

RUNNY NOSE

COUGH

RASH

KOPLIK SPOTS



COMPLICATIONS

Measles complications are especially serious for those who are very young, very old, or with compromised immune systems.

Common:

- Ear infections
- Diarrhea

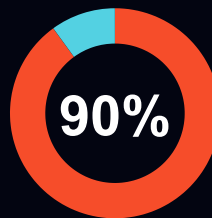
Severe:

- Hospitalization
- Pneumonia
- Swelling of the brain

Measles virus can remain in the air 2 hours after an infected person was in the space



The virus is very infectious: 90% of people exposed who are not protected will be infected

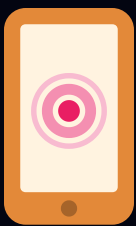


The MMR vaccine is very effective against measles. 97% of people are protected with 2 doses



If you think you or a family member has measles:

1 Call your healthcare provider right away - do not go straight to the hospital



2 Your healthcare provider will tell you how to get care safely without exposing others



3 Stay at home and do not have visitors in your home until you are no longer contagious OR measles is ruled out

