



Diabetes in Montana, 2019



In 2019, approximately

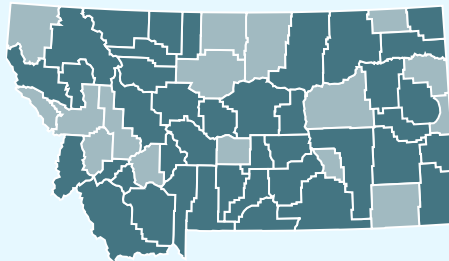
8%

of Montana adults reported having ever been diagnosed with diabetes.

This works out to an estimated

64,000

adults with diagnosed diabetes statewide.



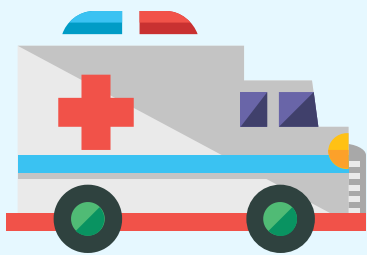
40

MT counties

identified diabetes or diabetes-related risk factors within their

top 4

most pressing health concerns in Community Health Assessments.



EMS units made

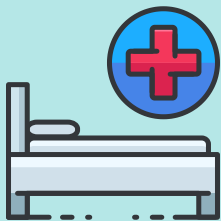
1,837

diabetes-related patient transports

and provided diabetes-related treatments for

387

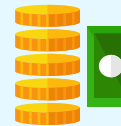
additional patients that were not transported.



There were

1,675

inpatient admissions related to diabetes across the state.



Total charges from these diabetes-related inpatient admissions were

\$42,597,780.



Diabetes was a primary or contributing factor to

958 deaths

among Montana residents.

Data Sources

Montana Behavioral Risk Factor Surveillance System (BRFSS). Centers for Disease Control and Prevention (CDC). BRFSS Data [2019]. Atlanta, GA: U.S. Department of Health and Human Services, Centers for Disease Control and Prevention, with Montana Department of Public Health and Human Services.

Montana County Community Health Needs Assessments and Community Health Assessments, 2017-2020.

Montana Emergency Medical Services Data [2019]. EMS & Trauma Systems Section, Public Health and Safety Division. Montana DPHHS.

Montana Hospital Discharge Data System [2019]. Office of Epidemiology and Scientific Support, Public Health and Safety Division. Montana DPHHS. Data provided courtesy of participating MHA members.

Montana Department of Public Health and Human Services, Montana Vital Statistics Analysis Unit, Montana Death Certificates, 2019.