

## TOTAL (BY PERCENT)

### BIRTH TO COLLECTION PERCENT (Goal 24-48 hours)



0-12	359
12-24	302
24-48	1941
Greater than 48	55

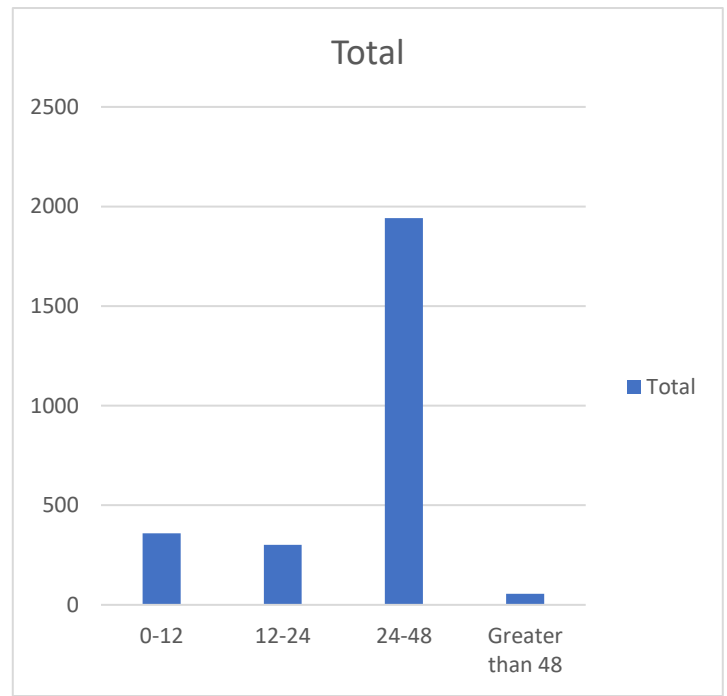
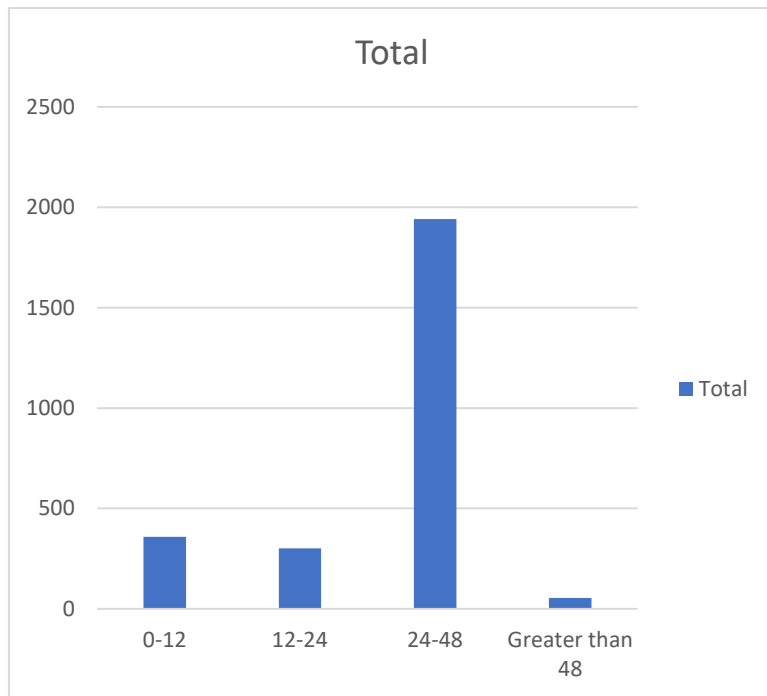
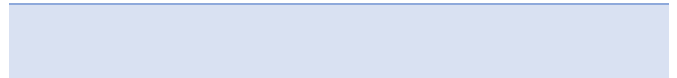


## TOTAL (BY NUMBER)

### BIRTH TO COLLECTION NUMBER (Goal 24-48 hours)



0-12	359
12-24	302
24-48	1941
Greater than 48	55



**COLLECTION TO RECEIPT PERCENT**  
(Goal within three days)

--	--

--	--

0-12	4.15%
12-24	23.52%
24-48	54.45%
48-72	12.31%
72-96	3.66%
Greater than 96	1.91%

--	--

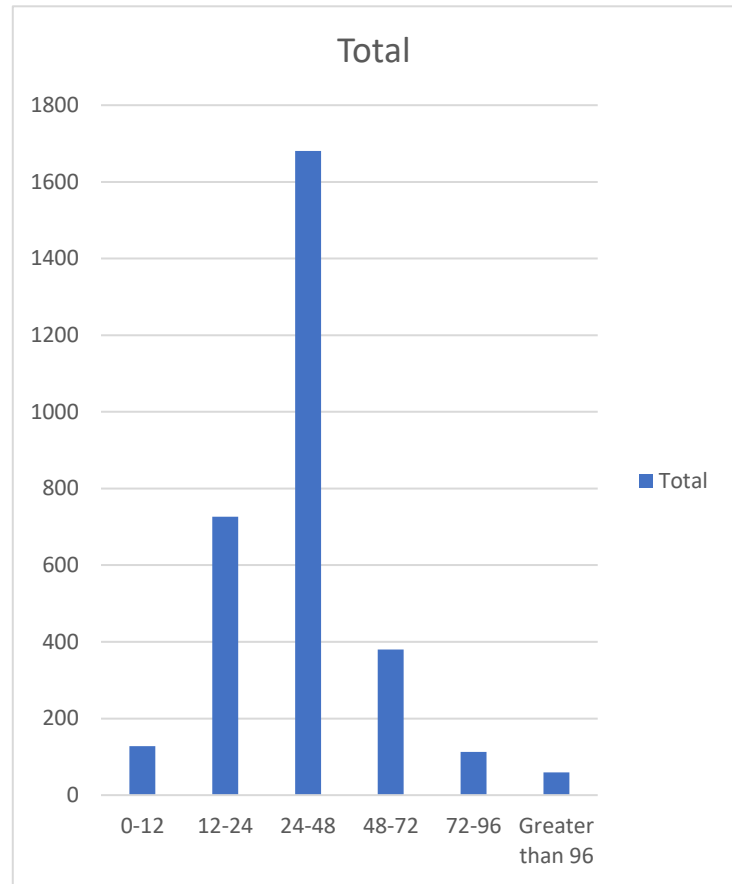
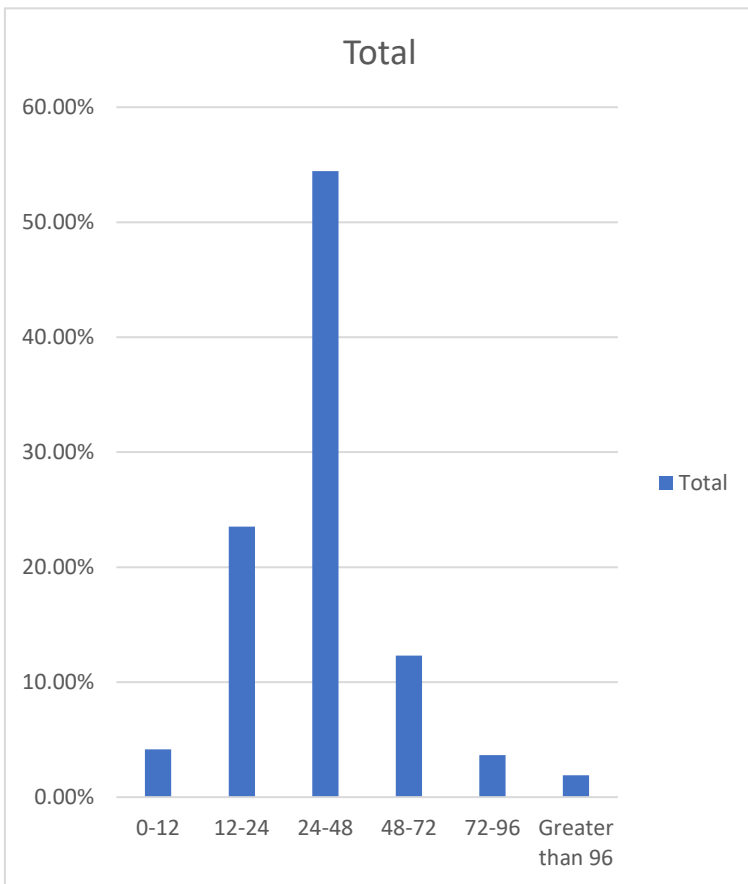
**COLLECTION TO RECEIPT NUMBER**  
(Goal within three days)

--	--

--	--

0-12	128
12-24	726
24-48	1681
48-72	380
72-96	113
Greater than 96	59

--	--



**RECEIPT TO APPROVAL PERCENT**  
(Goal within five days)

--	--

--	--

0-12	2.46%
12-24	0.16%
24-48	44.38%
48-72	29.38%
72-96	16.26%
Greater than 96	7.35%

**RECEIPT TO APPROVAL NUMBER**  
(Goal within five days)

--	--

--	--

0-12	76
12-24	5
24-48	1370
48-72	907
72-96	502
Greater than 96	227

