

**BIRTH TO COLLECTION PERCENT
(Goal 24-48 hours)**

--	--

0-12	341
12-24	295
24-48	1932
Greater than 48	48

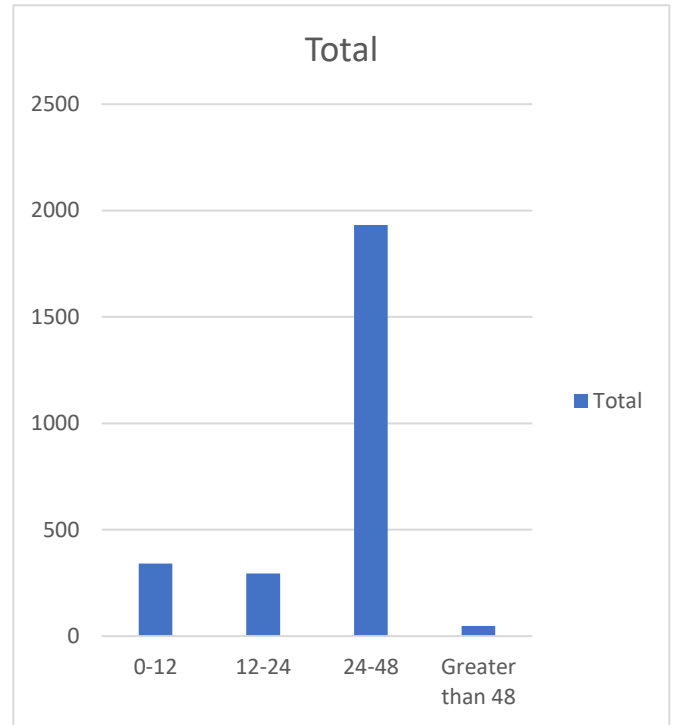
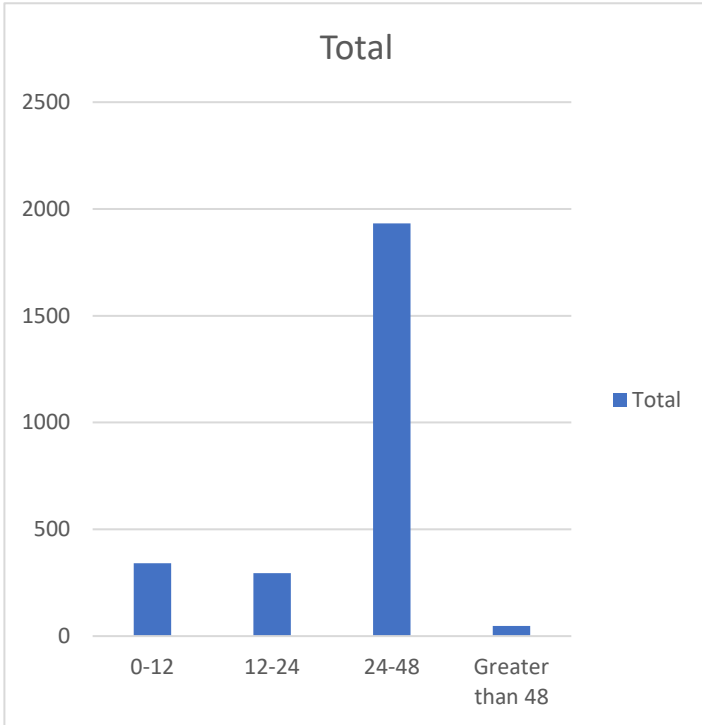
--	--

**BIRTH TO
COLLECTION
NUMBER (Goal 24-48
hours)**

--	--

0-12	341
12-24	295
24-48	1932
Greater than 48	48

--	--

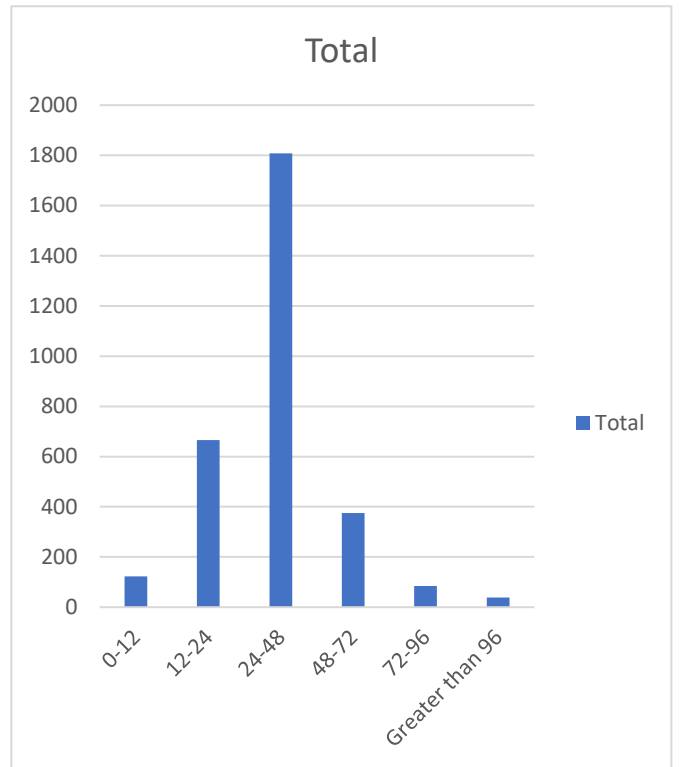
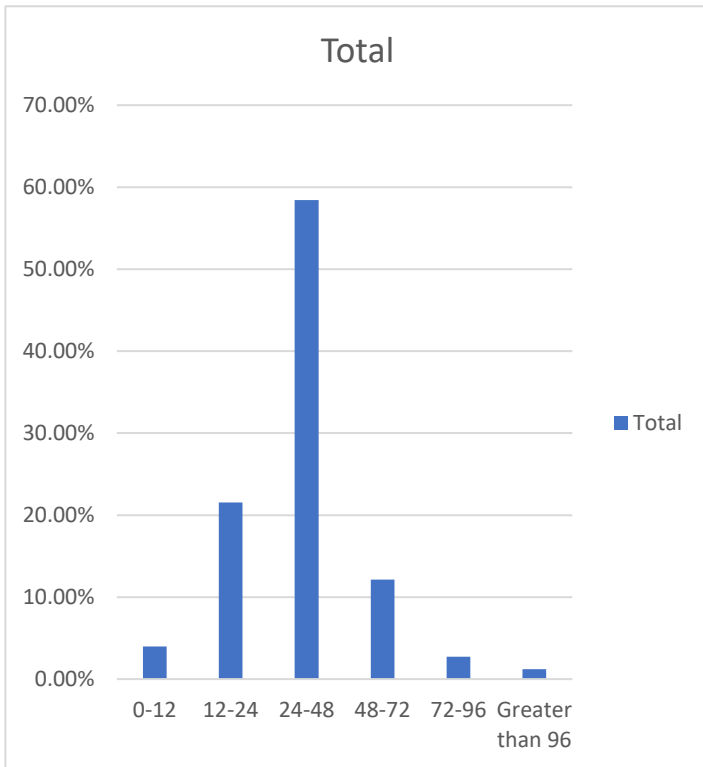


**COLLECTION TO RECEIPT PERCENT
(Goal within three days)**

0-12	3.98%
12-24	21.53%
24-48	58.44%
48-72	12.12%
72-96	2.71%
Greater than 96	1.23%

**COLLECTION TO RECEIPT NUMBER
(Goal within three days)**

0-12	123
12-24	666
24-48	1808
48-72	375
72-96	84
Greater than 96	38



**RECEIPT TO APPROVAL PERCENT
(Goal within five days)**

--	--

--	--

0-12	4.20%
24-48	52.49%
48-72	33.58%
72-96	7.53%
Greater than 96	2.20%

**RECEIPT TO
APPROVAL NUMBER
(Goal within five days)**

--	--

--	--

0-12	130
24-48	1624
48-72	1039
72-96	233
Greater than 96	68

