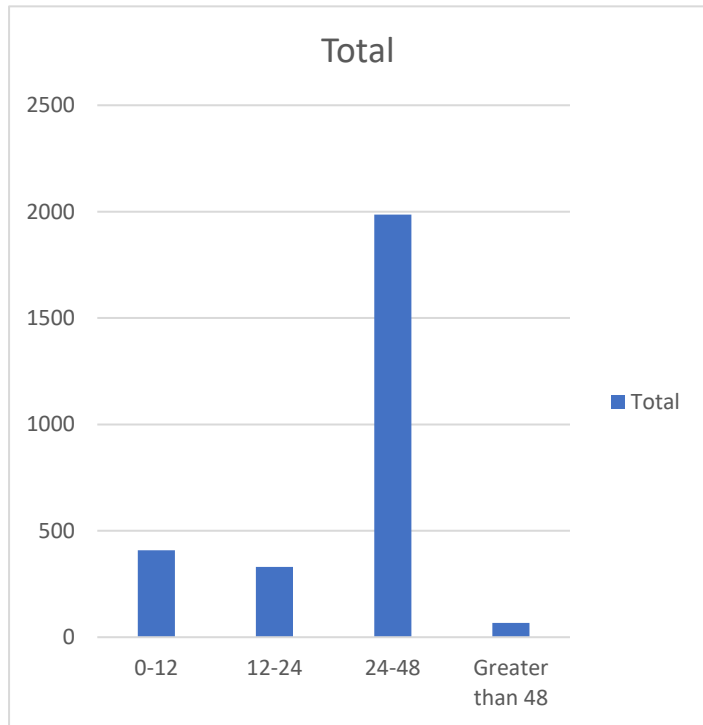


TOTAL (BY PERCENT)

BIRTH TO COLLECTION PERCENT (Goal 24-48 hours)

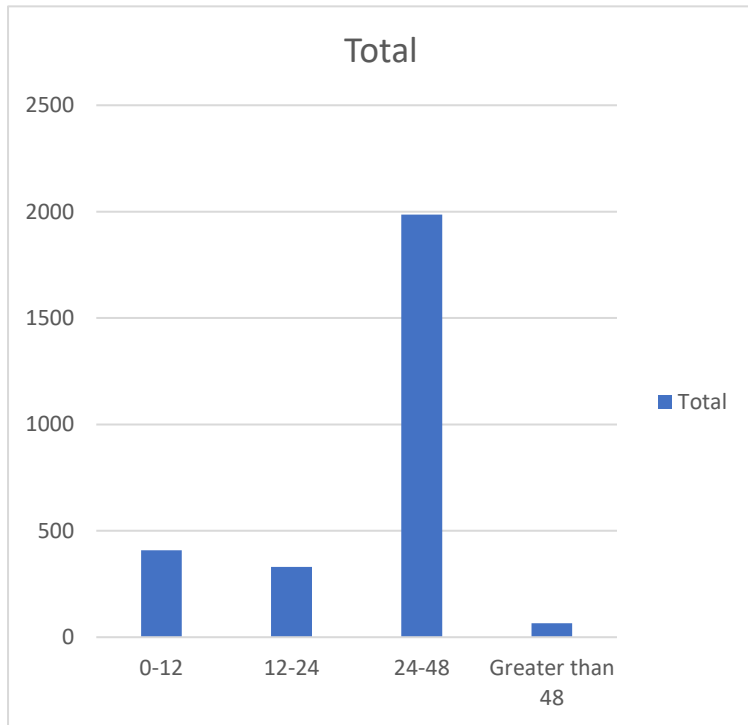
0-12	408
12-24	331
24-48	1986
Greater than 48	67



TOTAL (BY NUMBER)

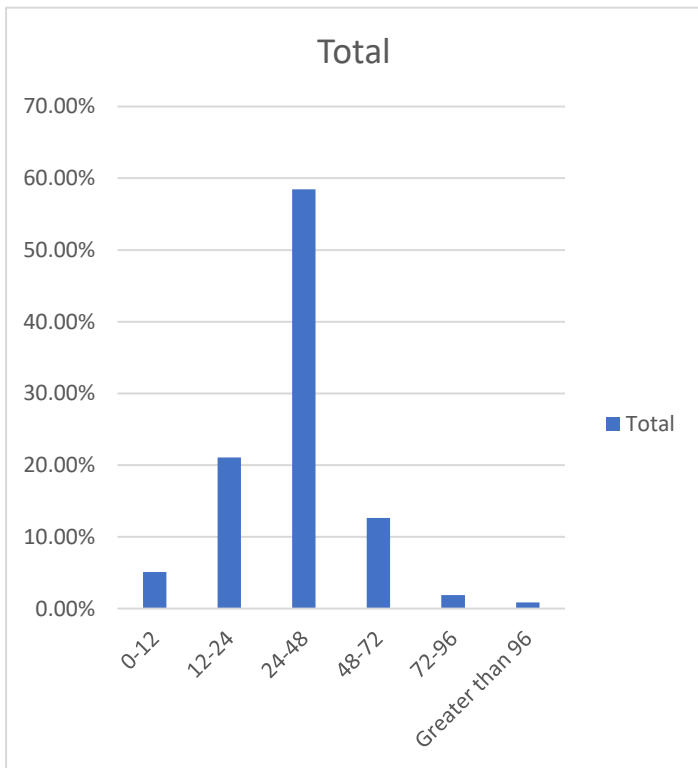
BIRTH TO COLLECTION NUMBER (Goal 24-48 hours)

0-12	408
12-24	331
24-48	1986
Greater than 48	66



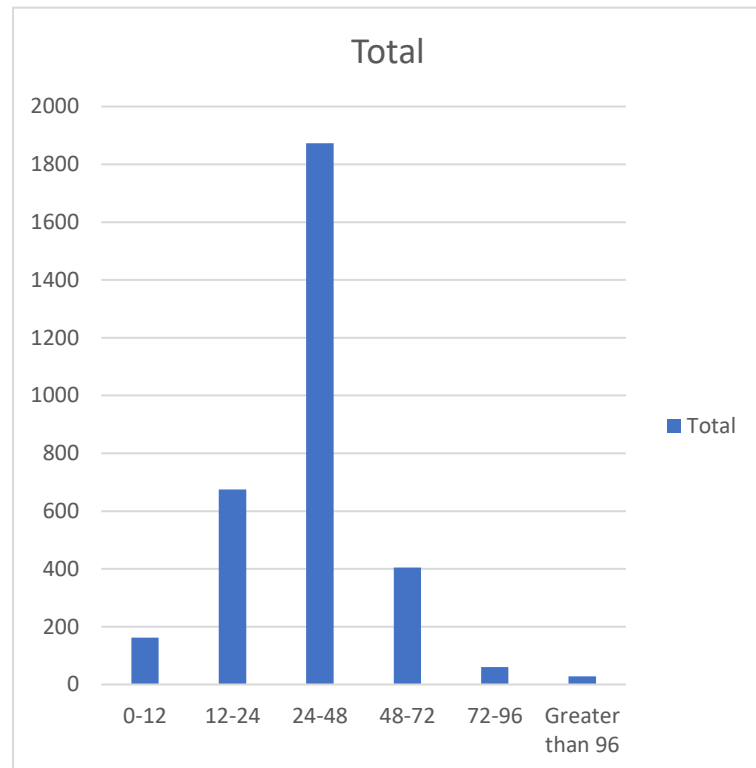
**COLLECTION TO RECEIPT PERCENT
(Goal within three days)**

0-12	5.09%
12-24	21.07%
24-48	58.46%
48-72	12.64%
72-96	1.87%
Greater than 96	0.87%



**COLLECTION TO
RECEIPT NUMBER
(Goal within three
days)**

0-12	162
12-24	675
24-48	1873
48-72	405
72-96	60
Greater than 96	28



**RECEIPT TO APPROVAL PERCENT
(Goal within five days)**

0-12	2.90%
12-24	0.03%
24-48	50.06%
48-72	37.55%
72-96	8.77%
Greater than 96	0.69%

**RECEIPT TO APPROVAL NUMBER
(Goal within five days)**

0-12	92
12-24	1
24-48	1604
48-72	1203
72-96	281
Greater than 96	22

