

# Public Health Emergency Preparedness – Program Updates

Taylor Curry – MCM/SNS Coordinator  
Andrea Wingo – Risk Communications & HAN

Grant Workshop – May 2024



DEPARTMENT OF  
**PUBLIC HEALTH &  
HUMAN SERVICES**

# Public Health Emergency Preparedness

- Who we are.
- What we do.
- The Readiness Response Framework – What is it? And how is it guiding our activities.
- Deliverables Updates – Attachment A



# Who Are We?



MONTANA  
**PUBLIC HEALTH  
EMERGENCY PREPAREDNESS**

The PHEP Program provides collaboration between government agencies, healthcare organizations, emergency responders, and community partners to enhance readiness and resilience to various threats and emergencies.

Since it was created in 2002, the PHEP Cooperative Agreement has evolved from focusing on Anthrax and Biological Agents, to an all-hazards focus.



DEPARTMENT OF  
**PUBLIC HEALTH &  
HUMAN SERVICES**

# What we do:



MONTANA  
**PUBLIC HEALTH  
EMERGENCY PREPAREDNESS**

- Our office is the direct recipient of PHEP Cooperative Agreement Funds from the federal government.



Distribute PHEP Funds to Local and Tribal Health Jurisdictions



LHJs and THJs use the funds to strengthen their ability to prepare for and respond to a range of public health threats.



We are more than willing to provide training, resources and technical assistance to LHJs and THJs to assist you with strategic planning to strengthen your public health preparedness capabilities.



DEPARTMENT OF  
**PUBLIC HEALTH &  
HUMAN SERVICES**

# The Disaster Cycle



# The Disaster Cycle, cont.



We want to acknowledge that Public Health has been recovering for over 2 years now. Often the Recovery process in the cycle is the longest and hardest process. We want you to know that we are here with you and are prepared to provide you with any support that you may need moving into the future.





MONTANA  
**PUBLIC HEALTH**  
**EMERGENCY PREPAREDNESS**

# The Public Health Response Readiness Framework

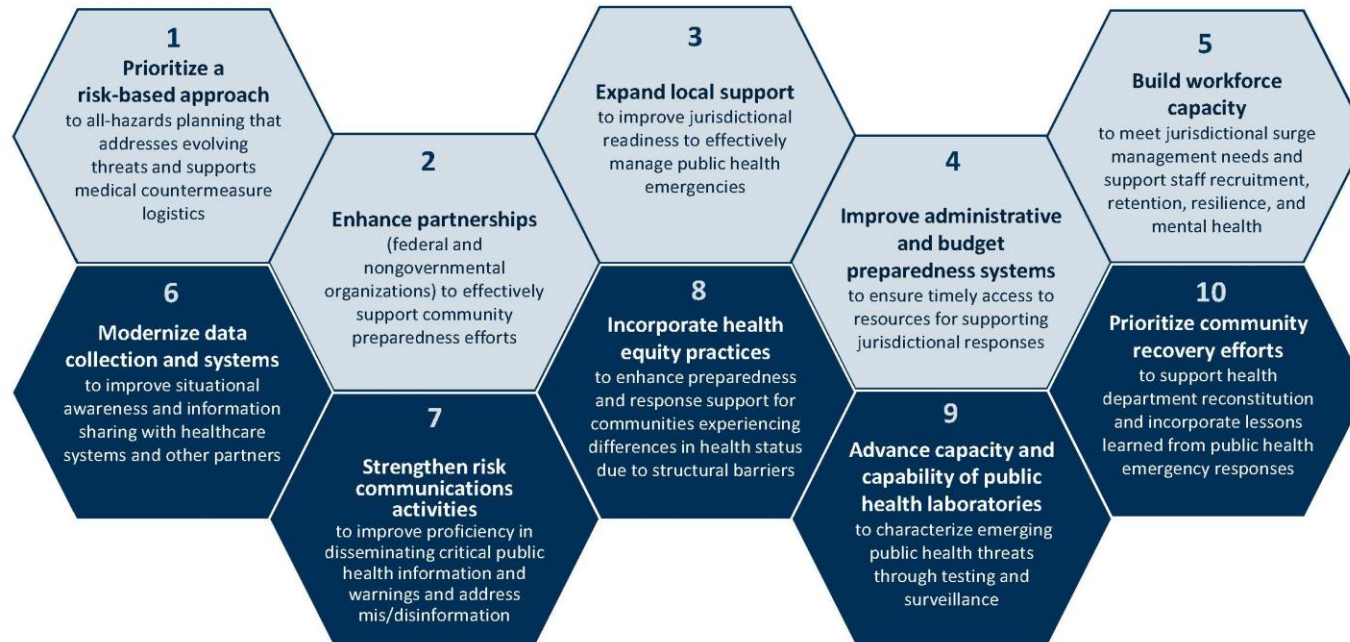


DEPARTMENT OF  
**PUBLIC HEALTH &**  
**HUMAN SERVICES**

# Response Readiness Framework

## Public Health Response Readiness Framework

2024-2028 PHEP Program Priorities - Defines Excellence in Response Operations





# Response Readiness Framework

10

Focuses on 10 priority areas that are essential to our ability to prepare for, respond to, and recover from public health threats.



The Response Readiness Framework are priorities that should be focused on during planning activities. They **do not replace** the 15 Preparedness Capabilities.



# Response Readiness Framework

## CDC Response Readiness Framework (RRF)

- 1. Prioritizing a Risk-Based Approach:** All-hazards planning that addresses evolving threats and supports medical countermeasure logistics.
- 2. Enhanced Partnerships:** Effectively support community preparedness efforts.
- 3. Expand Local Support:** Improve jurisdictional readiness to effectively managed PH emergencies.
- 4. Improve Admin. and Budget Preparedness Systems:** Ensuring timely access to resources for supporting a response.
- 5. Build Workforce Capacity:** To meet surge management needs and support staff recruitment, retention, resilience and mental health.



# Response Readiness Framework

## CDC Response Readiness Framework (RRF), con't.

6. **Data Modernization:** Improve situational awareness and information sharing with healthcare systems and other partners.
7. **Strengthen Risk Communications:** Improve proficiency in disseminating critical PH information and address mis/disinformation.
8. **Incorporate Health Equity:** Enhance preparedness and response support for communities experiencing differences in health status due to structural barriers.
9. **Advance Capacity and Capability of PH Laboratories:** Enhancing testing and surveillance
10. **Prioritize Recovery Efforts:** Reconstitution and incorporating lessons learned from PH emergencies.



# #2 Enhance Partnerships

- We are focusing on the relationship building between Emergency Management, Public Health Jurisdictions, and Healthcare Coalitions.
- You will see this included in deliverables this year like the deliverable EX1 where we would like you to include partners.



# #3 Expand Local Support

We have hired a Local Jurisdiction Liaison to help coordinate support to the Local and Tribal Health Jurisdictions.

- We want to support and provide technical assistance to you whenever needed. This includes more in person visits, and support with response and readiness activities.
- We are willing to provide technical assistance to any jurisdiction that needs help with deliverable CR1: Health Hazard and Risk Assessment.



# #8 Incorporate Health Equity Practices

- Mackenzie is focusing on incorporating health equity practices into our plans and deliverables.
- We are asking you to include Access and Functional Needs partners in your planning process.
- These partners should be included in your exercises, planning activities and responses.





MONTANA  
**PUBLIC HEALTH**  
**EMERGENCY PREPAREDNESS**

# Updates to the PHEP Deliverables



DEPARTMENT OF  
**PUBLIC HEALTH &  
HUMAN SERVICES**

# Deliverable Changes

## P1: Pandemic Influenza & Communicable Disease Response Plan

- Complete your internal review process
  - Not required to present to the board of health
- Upload summary of noteworthy changes to the progress report

## CR2: Participate in Regional Healthcare Coalitions

- Participate in an exercise or training coordinated by RHCC
  - Not required to attend executive board meetings
- Provide brief summary outlining participation and what you learned





# Deliverable Changes

## CM1: Off-Site Point-of-Dispensing Vaccination Clinic

- Any quarter deliverable

## B1: Budget

- Every quarter deliverable in accordance with CDC guidelines



# Deliverable Changes

## T1: Training

- Additional training recommendations provided
  - Training recommendations grouped based on staff roles within the jurisdiction
- Select staff to complete at least two trainings according to their roles

## IM2: HAN Response

- 1 HAN coordinator must respond
- 24 hours to respond regardless of notification type
- DPHHS is not tracking forwarding response rates



# Deliverable Changes

## IM3: 24/7 Communication System Implementation

- Respond within 30 minutes
- In one of the quarters, upload documentation to the progress report stating that your 24/7 Communication System Plan is current





MONTANA  
**PUBLIC HEALTH**  
**EMERGENCY PREPAREDNESS**

# New Deliverables



DEPARTMENT OF  
**PUBLIC HEALTH &**  
**HUMAN SERVICES**

# EX1: Highly Infectious Disease TTX

- Each region assigned a quarter to participate in TTX conducted by PHEP
  - Eastern Region - 1<sup>st</sup> Quarter, September 18<sup>th</sup>, 2024
  - Central Region - 2<sup>nd</sup> Quarter, December 4<sup>th</sup>, 2024
  - Southern Region - 3<sup>rd</sup> Quarter, March 19<sup>th</sup>, 2025
  - Western Region - 4<sup>th</sup> Quarter, June 25<sup>th</sup>, 2025
- Invite regional partners to attend
- Complete an AAR/IP and upload to progress report



# CR1: Health Hazard and Risk Assessment

- Most recent threat, risk or hazard assessment from the last five years
- Completing a new risk assessment is only required if it has been greater than 5 years
- Upload to the first quarter progress report





MONTANA  
**PUBLIC HEALTH**  
**EMERGENCY PREPAREDNESS**

# Web Page and Progress Report Updates



DEPARTMENT OF  
**PUBLIC HEALTH &  
HUMAN SERVICES**

# The Updated PHEP Webpages and Progress Reports

- We have simplified and updated the PHEP web pages and the PHEP Progress Reports.



We want the information on the web pages to be up-to-date and easy to navigate.



The PHEP Progress Report is simpler and mirrors the requirements in the Attachment-A.





# The Updated PHEP Webpages and Progress Reports

- PHEP Home Page:
  - <https://dphhs.mt.gov/publichealth/phep/index>
- PHEP Resources Page:
  - <https://dphhs.mt.gov/publichealth/phep/phep-resources/index>



# Questions?



DEPARTMENT OF  
**PUBLIC HEALTH &  
HUMAN SERVICES**